

AcuFill Quilting with Embroidery Hoop ASQ27d Embroidery hoop ASQ27d

Embroidery hoop ASQ27d is very useful for filling a large size quilt with AcuFil design patterns created with AcuFilTool.

There is no inner hoop but the quilt layers are held in the hoop by means of the magnetic clamps.

- (1) Embroidery hoop ASQ27d
- (2) ASQ27d template
- (3) Magnetic clamps

CAUTION:

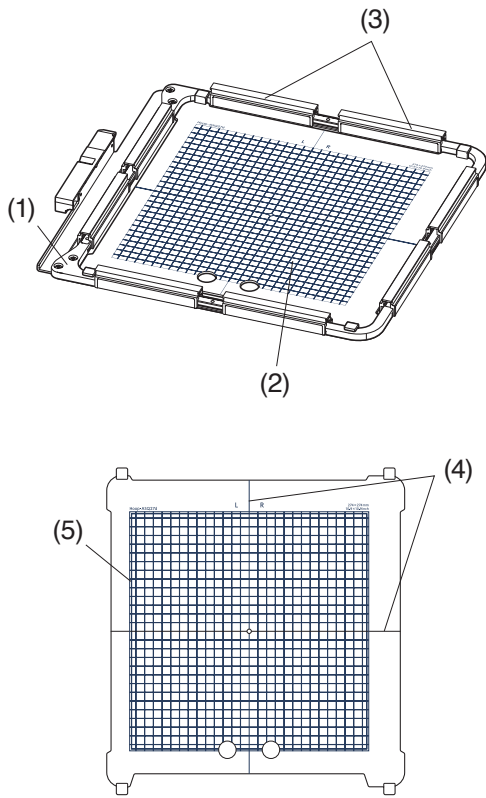
The magnetic clamp can damage items such as credit cards, floppy disks, etc.

Do not use the magnetic clamp near persons with a pacemaker or other medical implants which may be affected by the strong magnetic field.

ASQ27d template

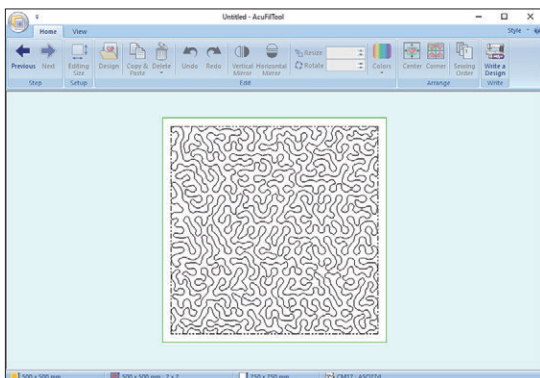
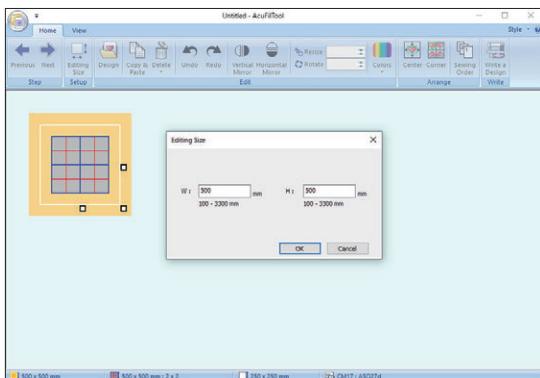
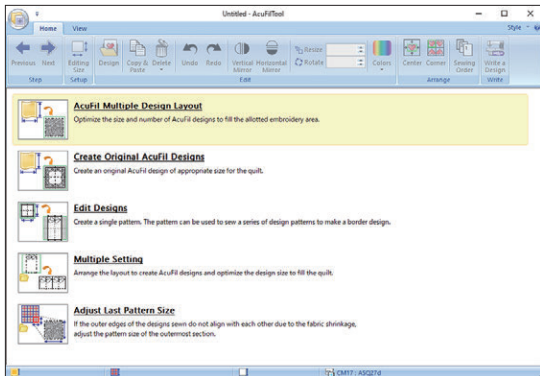
- (4) Centerlines
- (5) Maximum area of embroidery

Calibrate the center position before using the hoop (refer to the "Hoop Calibration" in the instruction book).



Preparing quilt layers

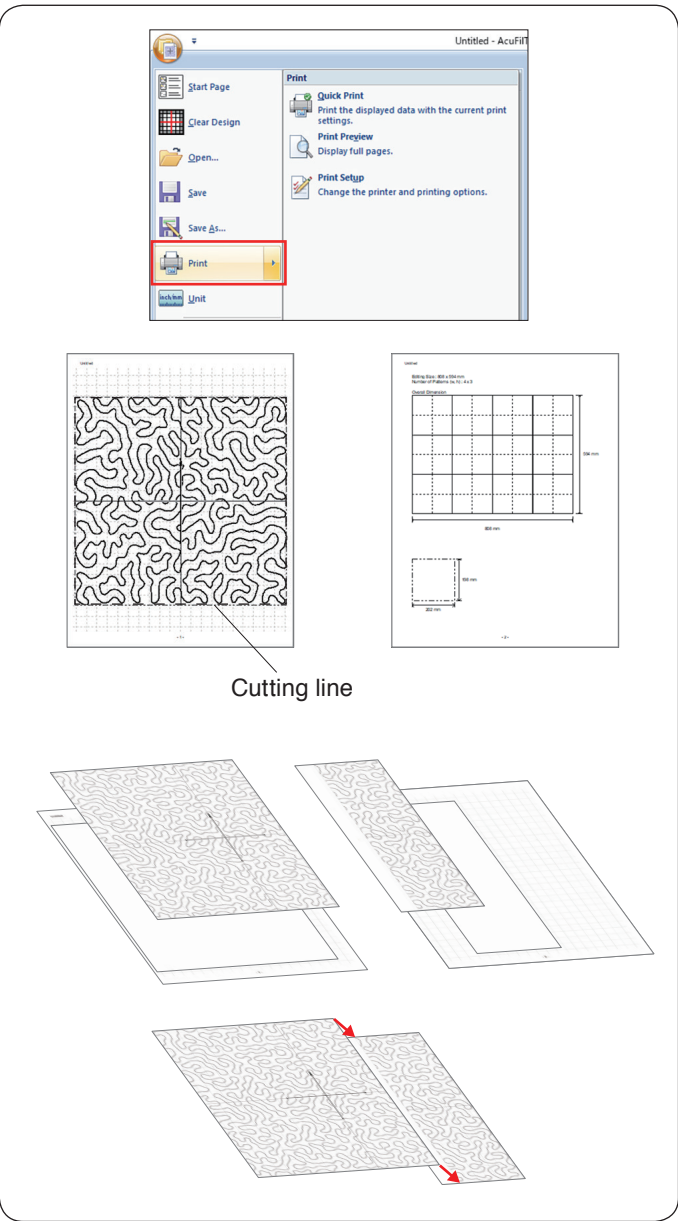
Start AcuFilTool on your PC and click "AcuFil Multiple Design Layout" to open.



Decide the quilt size.

Enter the dimensions of the quilt and click "OK" to calculate the optimum size of the AcuFil design pattern and number of patterns to fill.

On Home tab, in Step group, click  .



Printing the template sheet

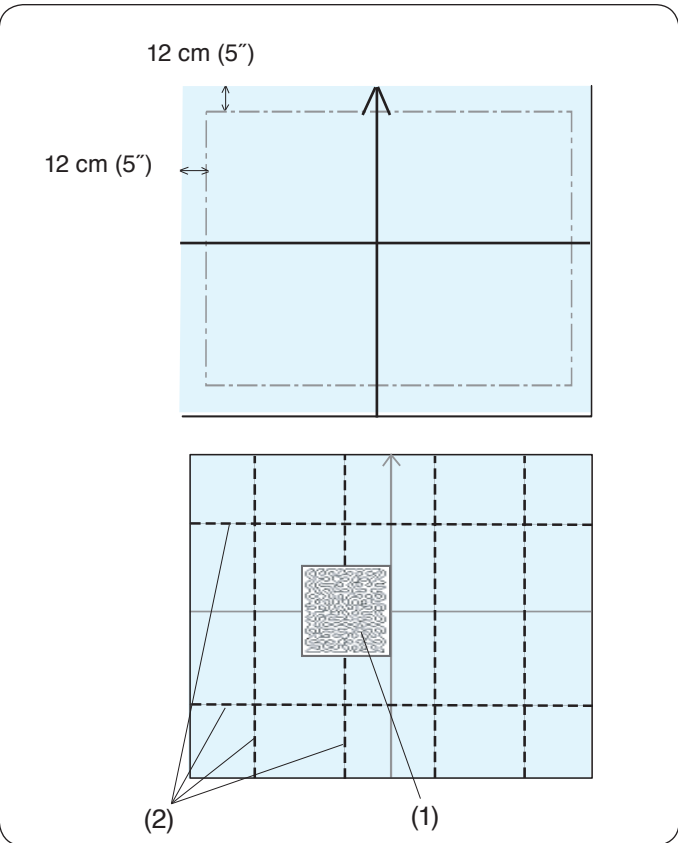
Click **Application>Print** and print the template sheets and design layout.

Cut the template sheet along the cutting line.

If the template sheet is printed on 2 pages, cut each section out and glue them together as shown.

Save the AcuFil design pattern on a USB flash drive.

NOTE:
 You can transfer the design pattern to the machine and save it to the machine's built-in memory with the direct PC-Link.

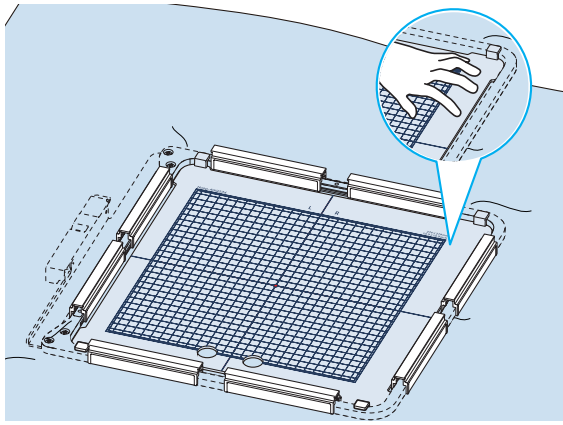


Marking the centerlines

Prepare a quilt top, base fabric and batting. Lightweight battings for machine quilting are recommended. Add at least 12 cm (5") outer margin to the embroidery area when deciding the overall quilt size. Draw centerlines and arrowhead with a washable marker. Pin or baste all layers together.

Place the design (template sheet) on the quilt to check the general arrangement. Place the design (template sheet) as shown and draw the lines on the extension of the centerlines of the design (template sheet).

- Mark the centerlines for each section on the quilt top.
- (1) Design (template sheet)
 - (2) Centerlines



Setting quilt layers in hoop ASQ27d

Position the quilt layers on hoop ASQ27d.

Place the ASQ27d template on the quilt and adjust the position of the quilt aligning the centerlines of the quilt and ASQ27d template.

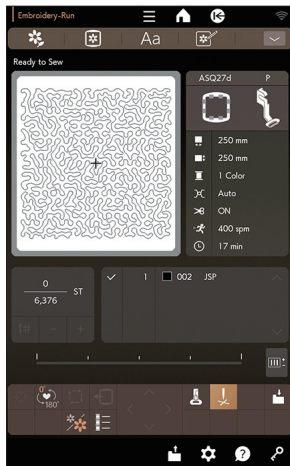
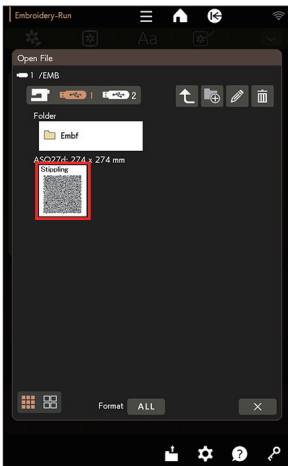
Set the quilt layers in the hoop and press down the ASQ27d template.

While pressing the ASQ27d template close to the outer frame, depress the magnetic clamps onto the hoop to fasten the quilt layers to the hoop.

Remove the ASQ27d template.

Remove pins and basting stitches from the hooped area.

1.



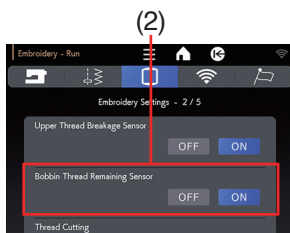
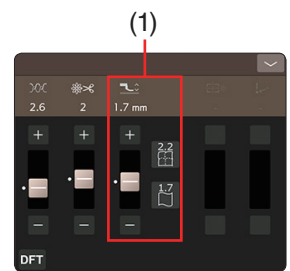
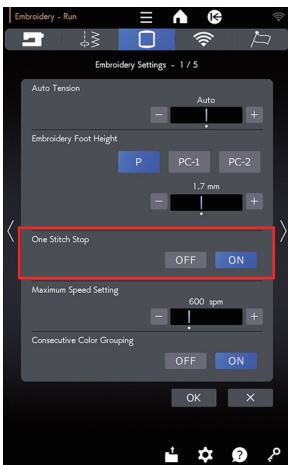
Sewing AcuFil design pattern

Insert the USB flash drive that contains the AcuFil design file into the USB port of the machine.

Turn on the machine and go to Open File in the embroidery mode.

1. Press the icon key of the desired file and the selected AcuFil design will open.

2.



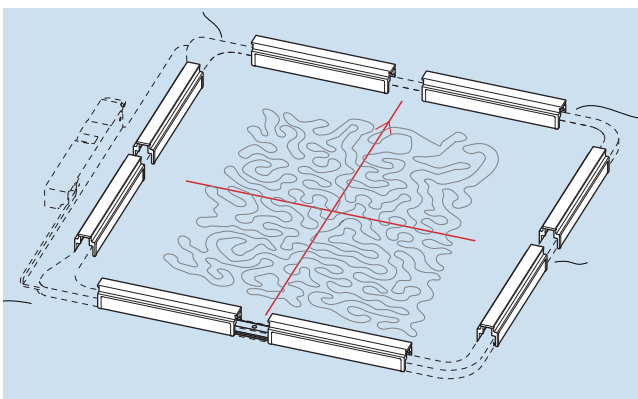
2. Turn the "One Stitch Stop" function ON in the Embroidery setting mode (refer to the instruction book).

Attach hoop ASQ27d to the machine and sew the first section.

NOTE:

- Use the same thread for the bobbin as the needle thread.
- Adjust the presser foot height (1) if necessary.
- Be sure that the "Bobbin thread remaining sensor" (2) function is turned ON in the Embroidery setting mode (refer to the instruction book).
- The purple tip needle is recommended to prevent skipped stitches.

3.

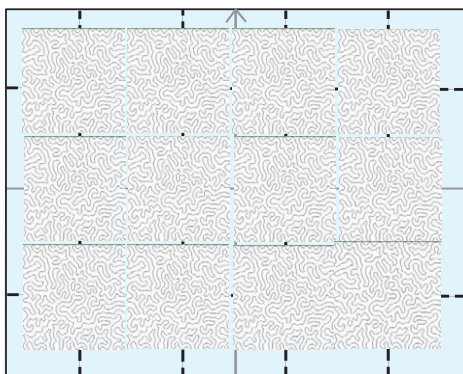
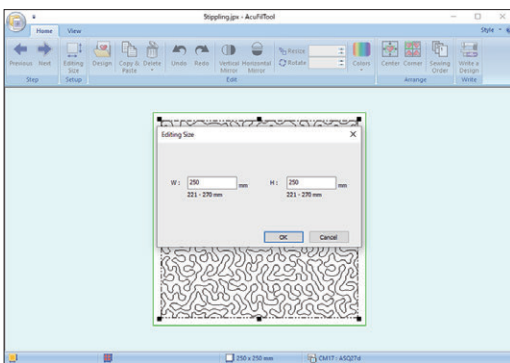
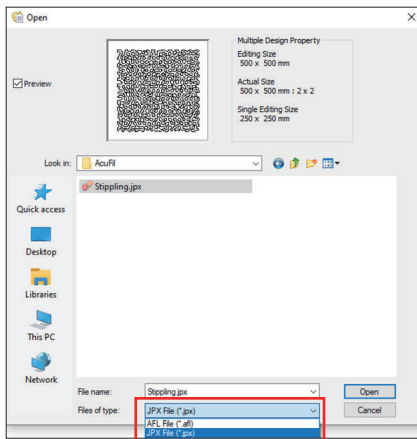
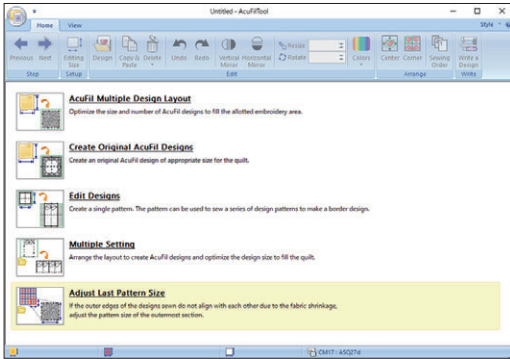
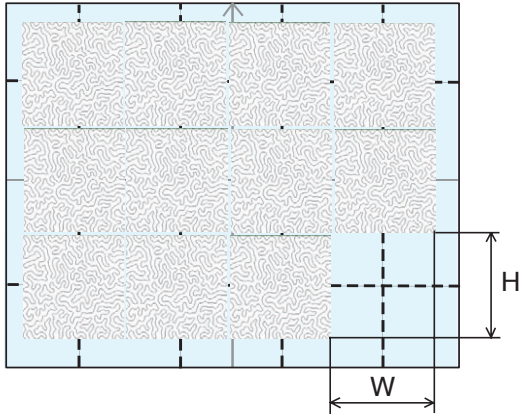


3. Then rehoop the quilt layers and sew the next section.

Repeat these steps. Sew the center section first, then neighboring sections one by one outward.

NOTE:

- Provide a wide space around the machine.
- Prevent the free end of the quilt layers from hanging down from the sewing surface.
- Make sure to raise the needle by pressing the needle up/down button before moving the carriage to the home position.



Adjusting the size of the last pattern

If the outer edges of each section do not align with each other due to fabric shrinkage, adjust the pattern size of the outer-most sections.

Measure the actual size (W: width, H: height) of blank section to be stitched.

Insert the USB flash drive that contains the AcuFil design files.

Click “Adjust Last Pattern Size” and the Open dialog box will open.

Select the design file that you have sewn and click Open. You can select the file format as follows;

- AFL File (*.afl)
- JPX File (*.jpx)

Enter the measured size of the blank section and click “OK”.

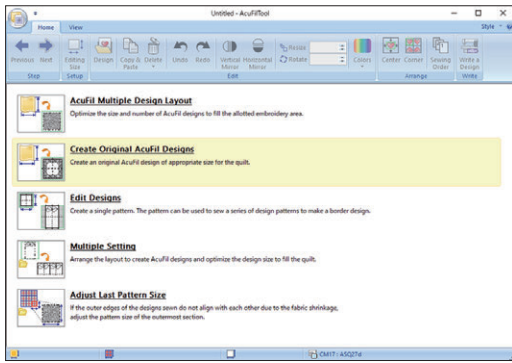
Save the adjusted design on the USB flash drive. Do not overwrite the design file. Save the file under a new name.

Insert the USB flash drive into the machine and sew the adjusted design in the last section.

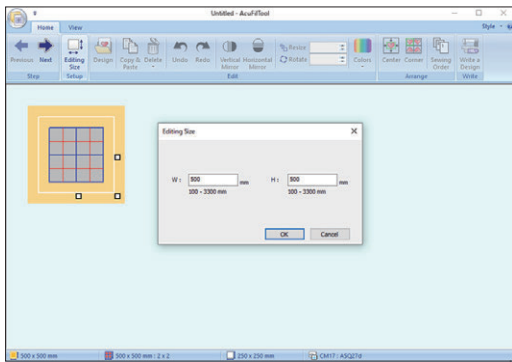
Creating original AcuFil designs


You can create your own AcuFil design patterns by combining element patterns from the Design Collection folder.

Click “Create Original AcuFil Designs”.

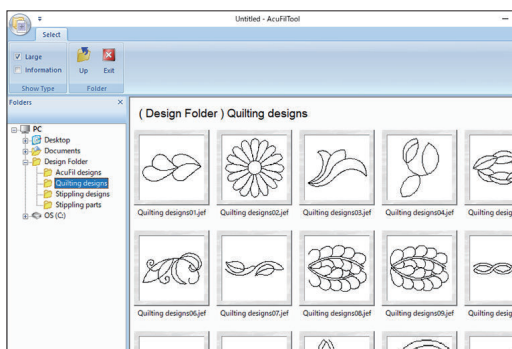


Enter the overall size of the quilt and click “OK” to calculate the optimum size of the AcuFil design pattern and number of patterns to fill the quilt.

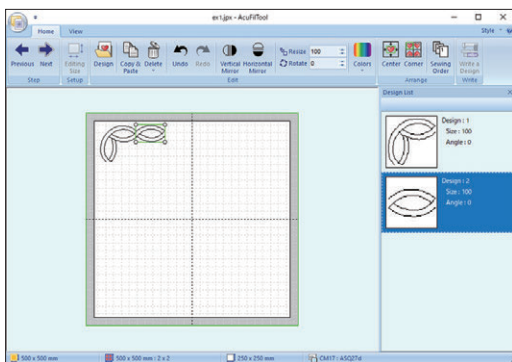


On Home tab, in Step group, click  and the layout window will open.

On Home tab, in Edit group, click “Design” and select the desired pattern to import.

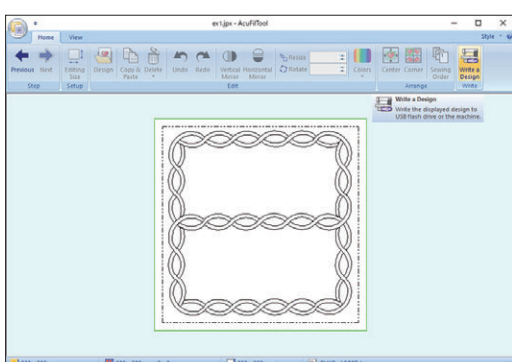


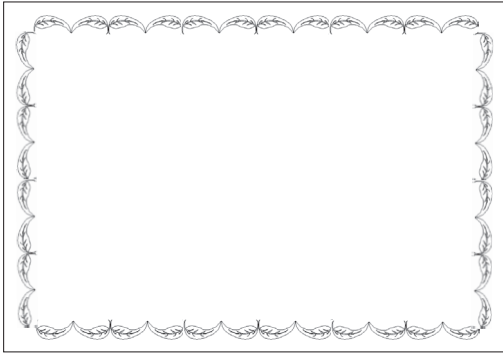
Edit and arrange the imported patterns to create your original design.



On Home tab, in Step group, click .

Save the design as a file on the USB flash drive to sew the created design pattern.



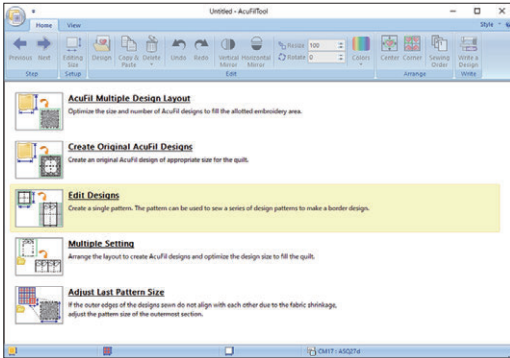


Editing designs

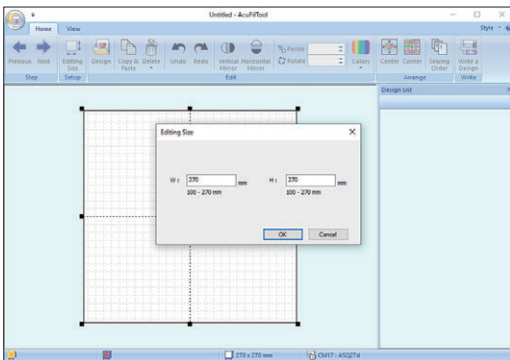
You can edit the layout of the pattern combination and adjust the design size.

Example: Sewing leaf design border along the quilt edge

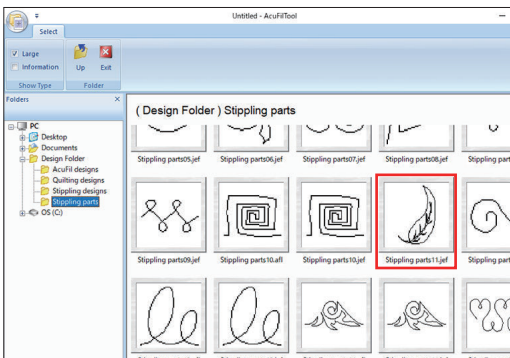
Click “Edit Designs”.



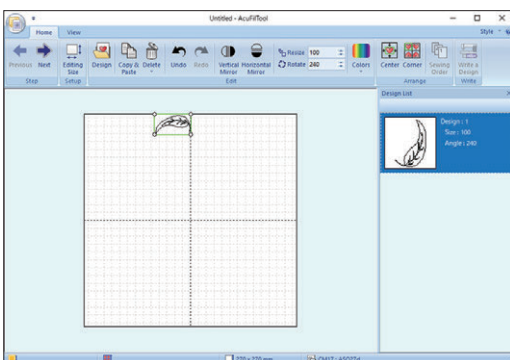
Enter the hoop size (270 x 270) and click “OK”.

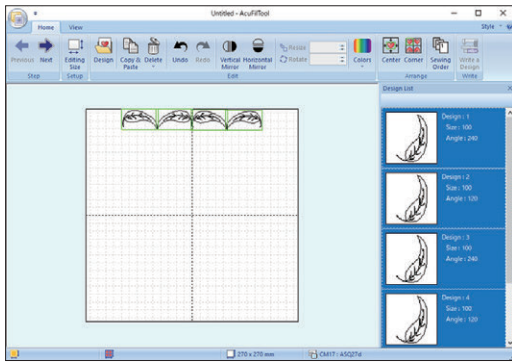


On Home tab, in Edit group, click “Design”.
Select the desired pattern to import (example: Stippling parts11).

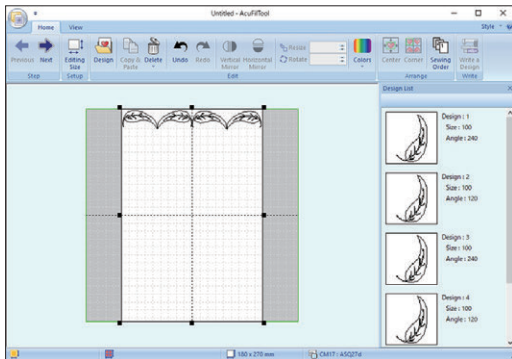


Rotate the design 240 degrees and place it at the upper edge as shown.



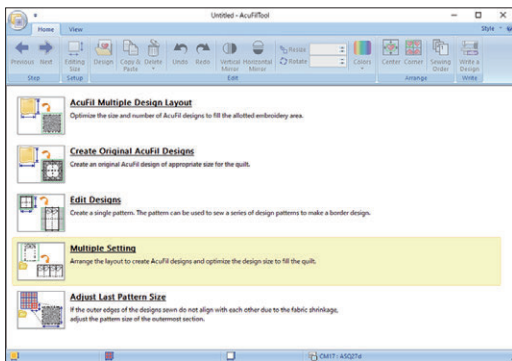


Duplicate the design, flip it over and place it opposite to the first one.
Repeat the above steps and line up 4 element patterns.

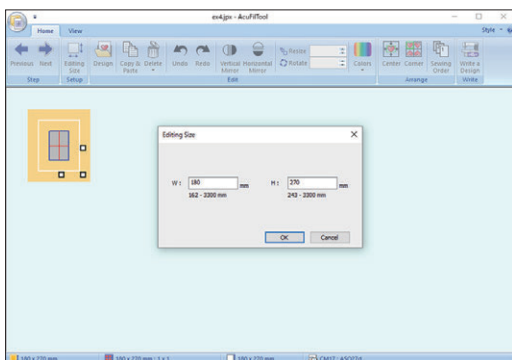


Adjust the width of the working area by dragging the anchor point.


Click  .
Save the design as a file on the USB flash drive.

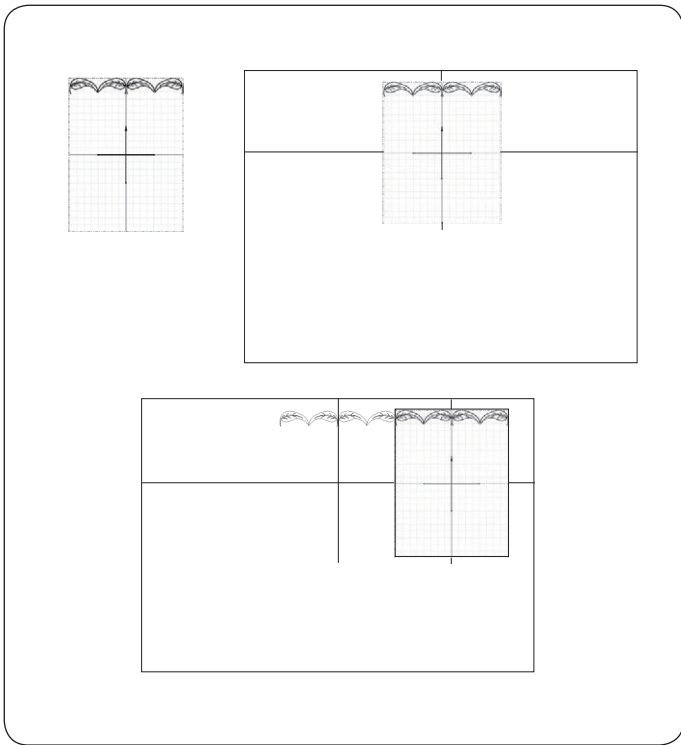


Go to the Start Page.
Click “Multiple Setting” and open the design saved in the previous step.



Enter the overall quilt width (W) and enter 270 for height (H) and then click “OK”.

Click  .
Save the design on the USB flash drive.



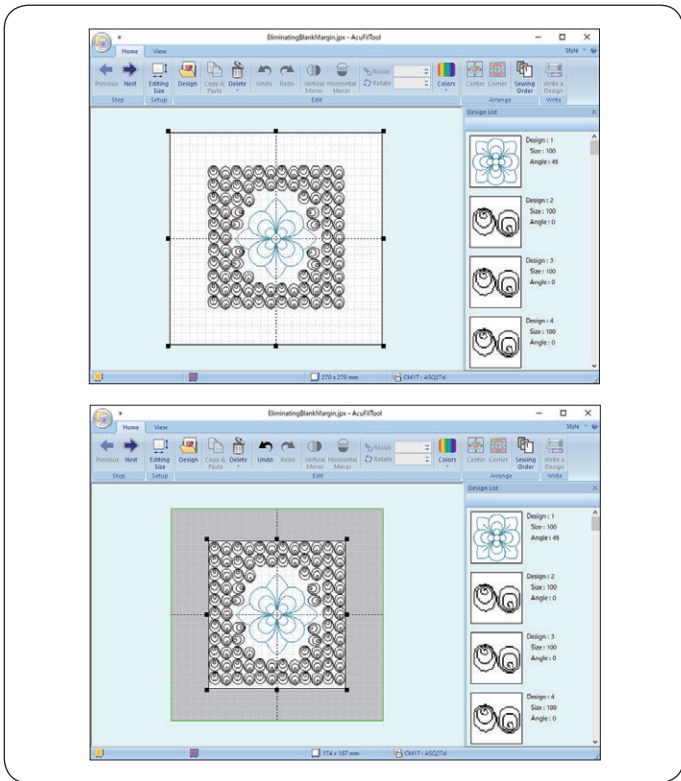
Sewing the border design

Print the template sheet and place it at the center of the upper edge of the quilt.

Mark the end points of the centerlines. Draw the centerlines on the quilt. The horizontal line should be as long as the overall quilt width.

Place the quilt on hoop ASQ27d and adjust the position by aligning the centerlines on the quilt and the AcuFil template. Sew the first section.

Place the template sheet at the next section and draw the vertical centerline. Sew the next section and repeat these steps to sew the remaining sections from the center outward.



Eliminating blank margin

If the design pattern created in the previous section is smaller than the calculated design size, there will be a blank margin around the design.

The blank margin can be eliminated by adjusting the working area.

Open a 270 x 270 working area and import the created design.

Adjust the working area size by dragging anchor points to eliminate the blank margin.

Save the design as a file.