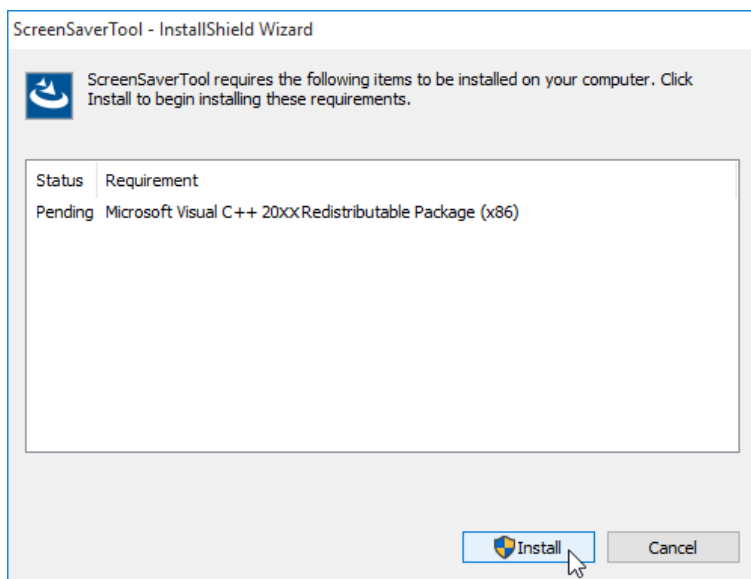


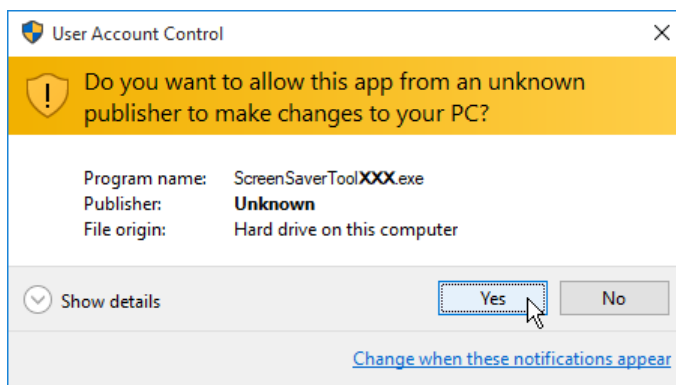
ScreenSaverTool Installation Instructions

Installation Method

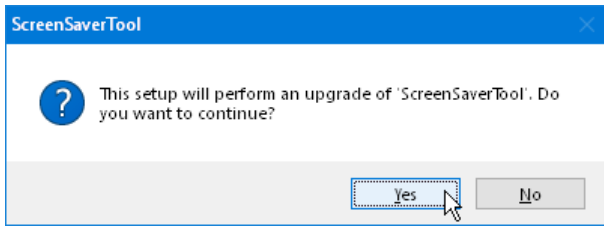
1. Download the file from the website and save it on your PC.
2. Double click the downloaded installation file.
3. If the following dialog is not displayed, go to Step 5.
The "InstallShield Wizard" starts up automatically.
Click "Install" to start installation.



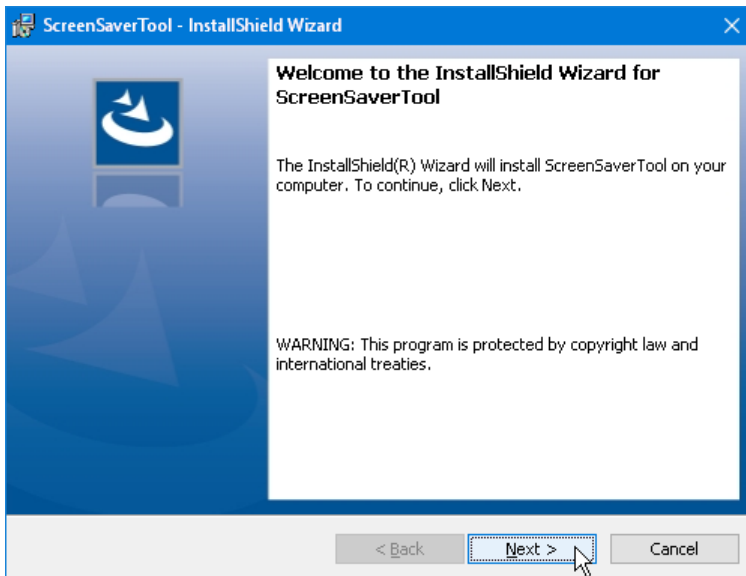
4. If the "User Account Control" dialog box opens, click "Yes".
The XXX on the image is a three-digit number that indicates the version of the file you downloaded in step 1.



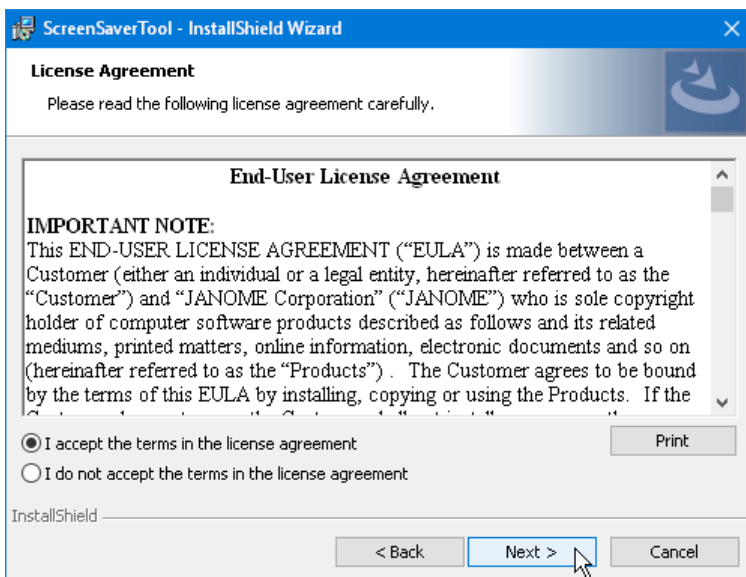
5. If the following dialog box opens, click “Yes”.



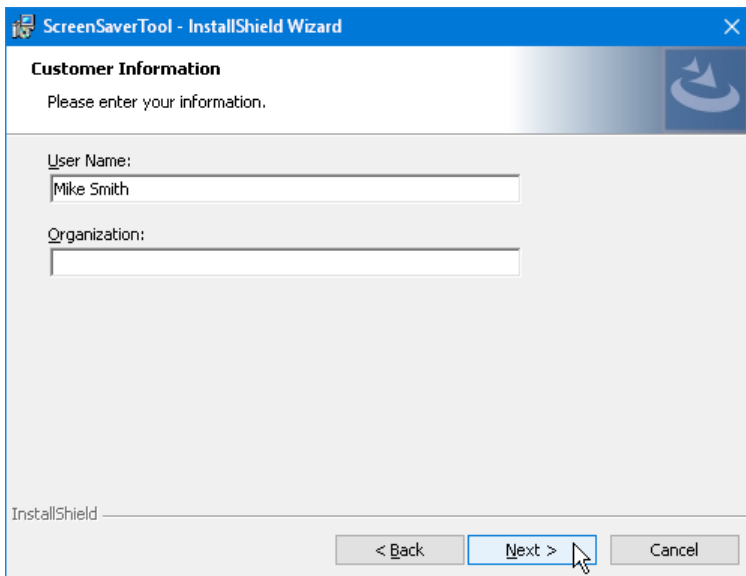
6. Click “Next”.



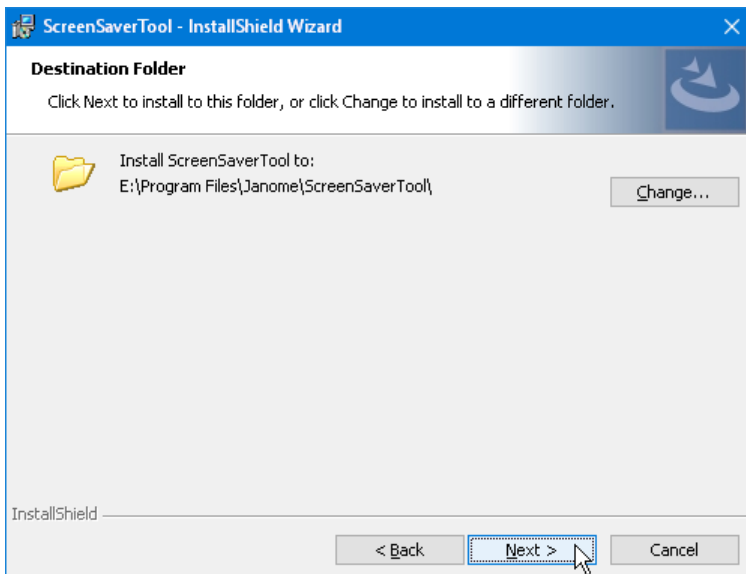
7. If the following dialog is not displayed, go to Step 12. Read the end user license agreement (EULA) and check “I accept the terms in the license agreement” if you agree. Click “Next”.



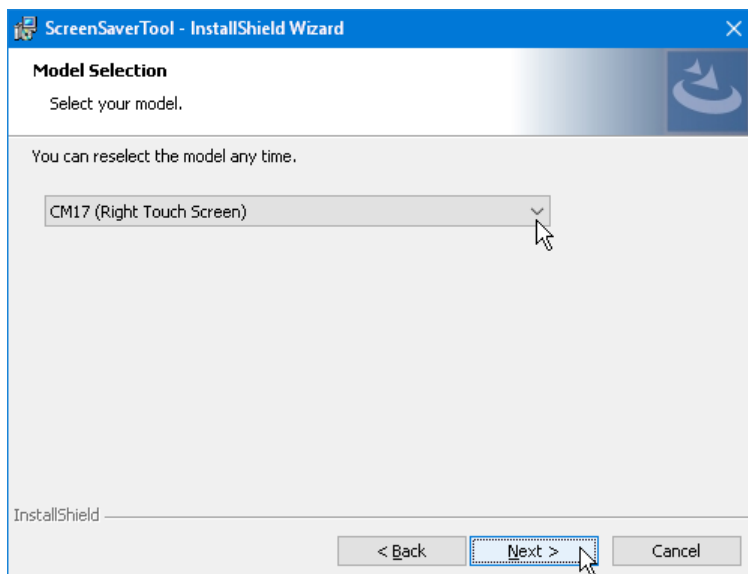
8. The user name and organization information set on your PC will be displayed. User information entry is not required. Click "Next".



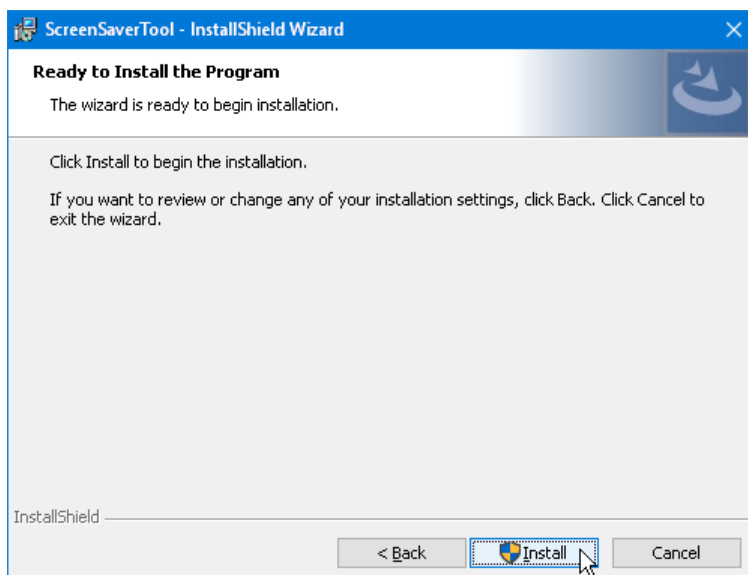
9. Click "Next" if you accept the installation location. If you wish to change the installation location, click "Change" and select the desired folder. Click "Next".



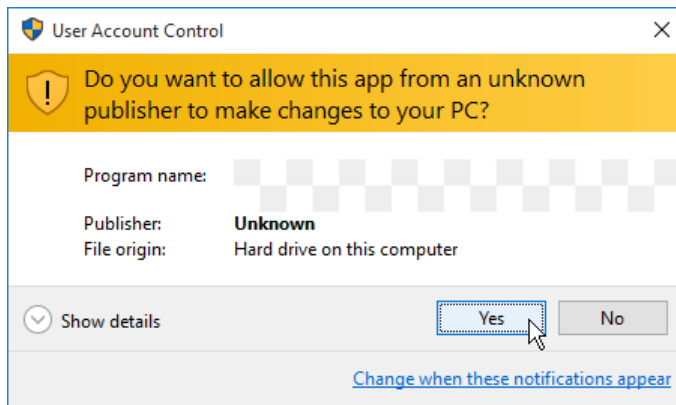
10. Select your sewing machine from the "Model Selection" dialog. Click "Next". You can reselect the model any time.



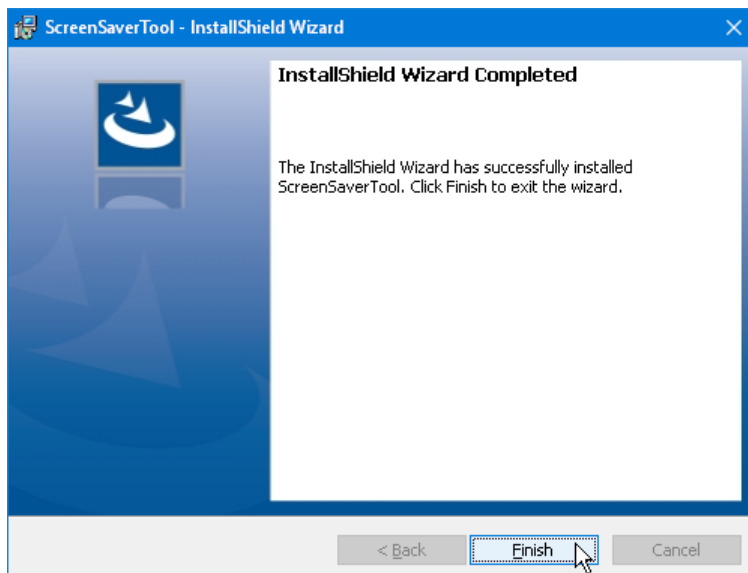
11. Click "Install" to start installation.



12. If the "User Account Control" dialog box opens, click "Yes".



13. When the update is completed, click "Finish".



End