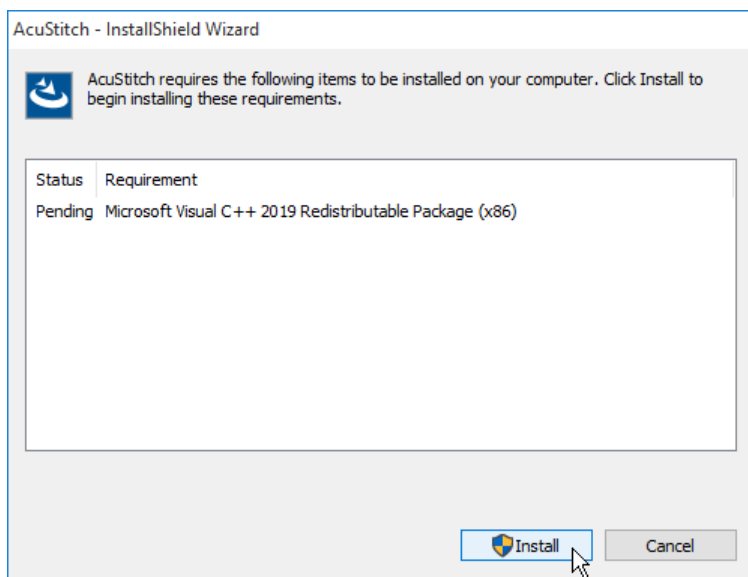


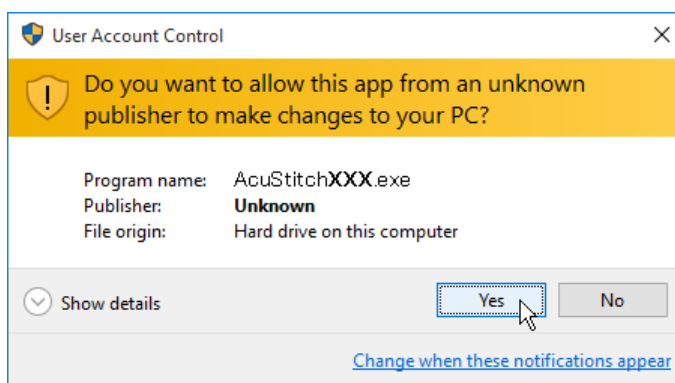
## AcuStitch Installation Instructions

### Installation Method

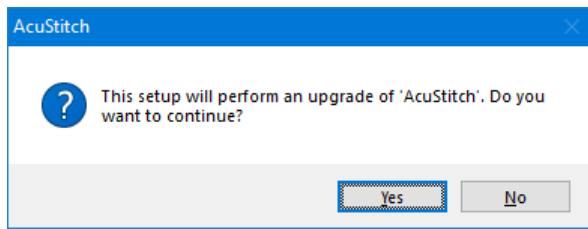
1. Download the file from the website and save it on your PC.
2. Double click the downloaded installation file.
3. If the following dialog box is not displayed, go to Step 5. The "InstallShield Wizard" starts up automatically. Click "Install" to start installation.



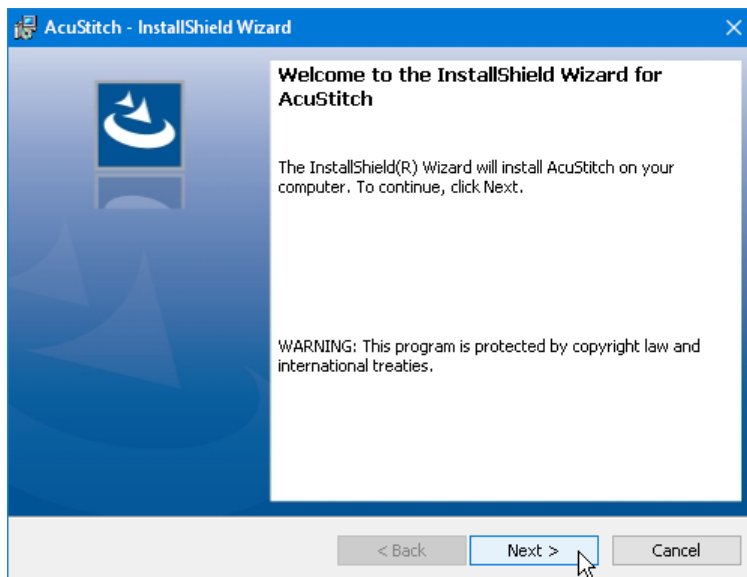
4. "User Account Control" dialog box opens. Click "Yes". The XXX on the image is a three-digit number that indicates the version of the file you downloaded in step 1.



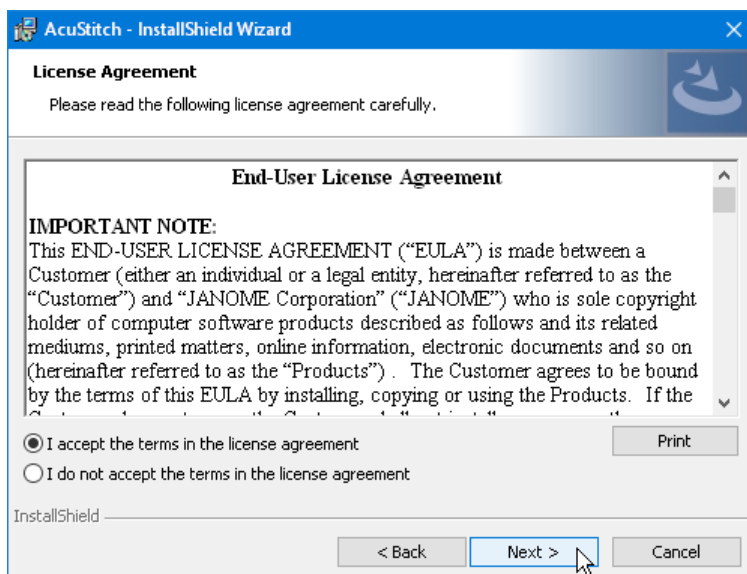
- If the following dialog box is not displayed, go to Step 6. The following dialog box opens. Click “Yes”.



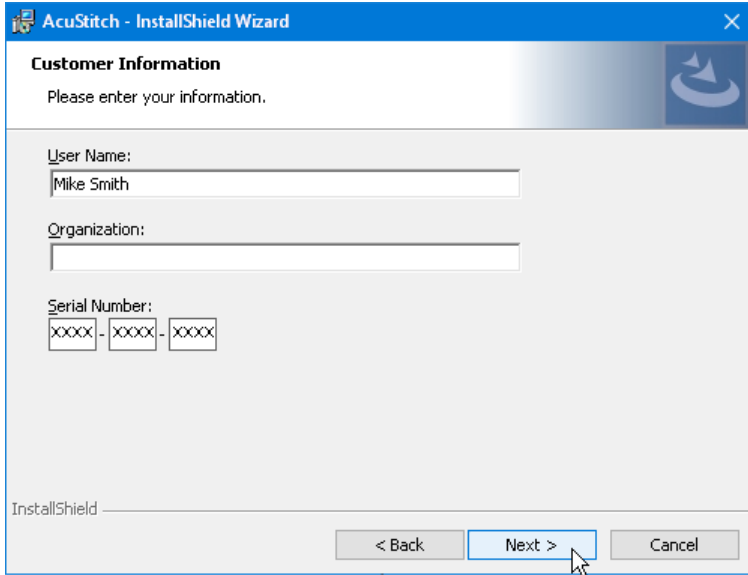
- The “InstallShield Wizard” starts up automatically. Click “Next”.



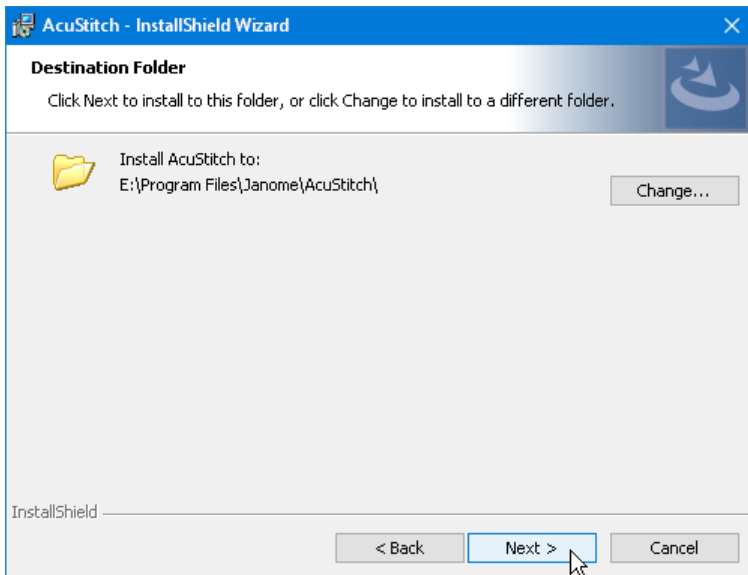
- Read the end user license agreement (EULA) and check “I accept the terms in the license agreement” if you agree. Click “Next”. If the following dialog box is not displayed, go to Step 12.



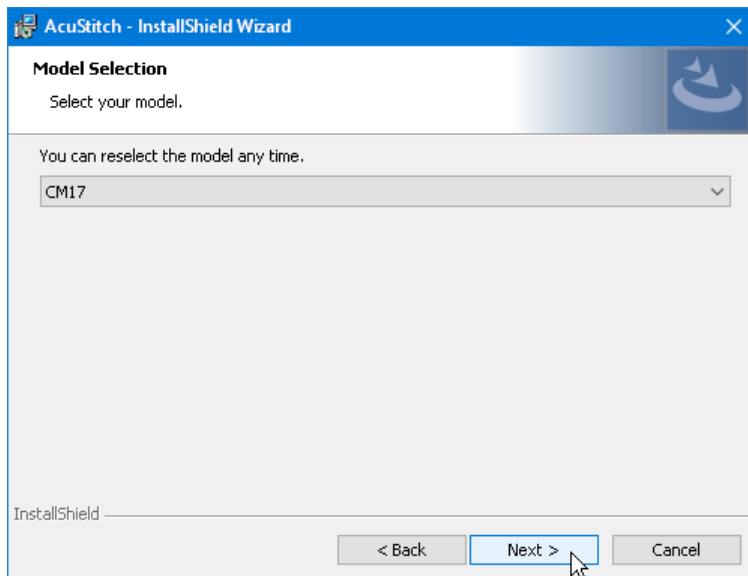
8. Enter the serial number that came with the AcuStitch you purchased. The Serial Number field is a mandatory field.  
The user name and organization information set on your PC will be displayed. Entry of the user name and organization information is not required. Click "next".



9. Click "Next" if you accept the installation location. If you wish to change the installation location, click "Change" and select the desired folder. Click "Next".



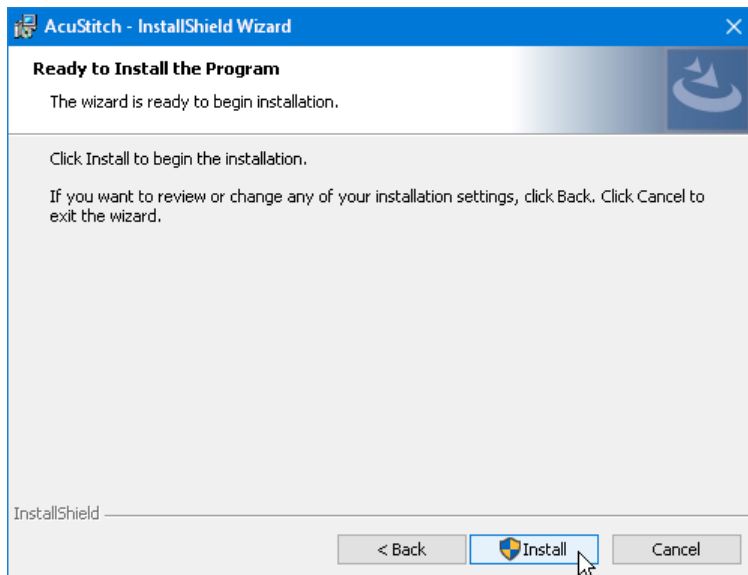
10. Select your sewing machine and click it. Click "Next".  
You can reselect the model any time.



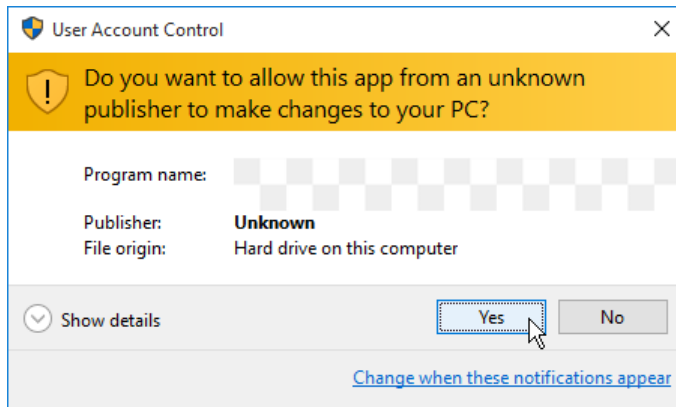
\*If you are using Memory Craft 550E Limited Edition, please select "MC550E / eXpressive 830L".

\*If you are using Memory Craft 500E Limited Edition, please select "MC500E / eXpressive 830".

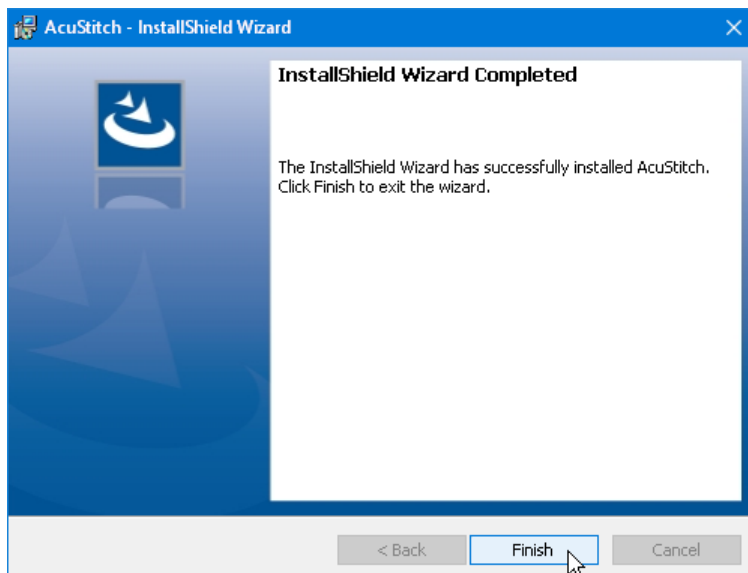
11. Click "Install" to start installation.



12. If the "User Account Control" dialog box opens, click "Yes".



13. When software is successfully installed, click "Finish" to exit.



End