

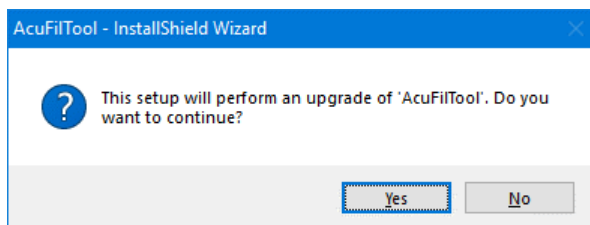
## **AcuFilTool Version 2.30 Installation Instructions**

As this update is only for owners of AcuFilTool Version 1.00 or later, it cannot be used in cases where AcuFilTool Version 1.00 or later is not installed.

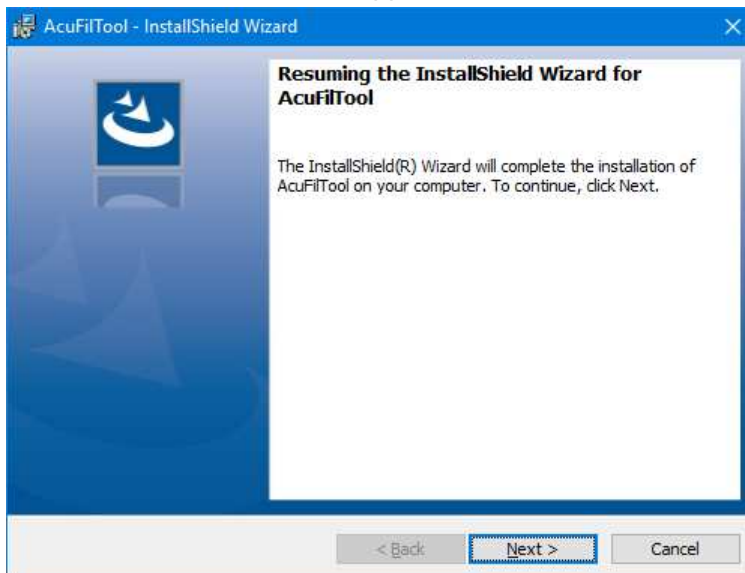
### **Update Method**

#### **When updating from Ver.2.00 or later**

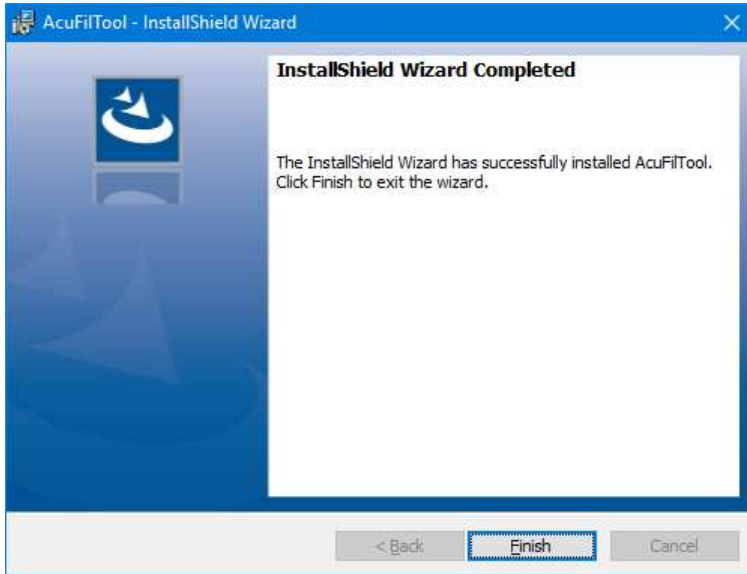
1. Download the file from the website and save it on your PC.
2. Double click on the “AcuFilTool230.exe” file.
3. Click “Yes”.



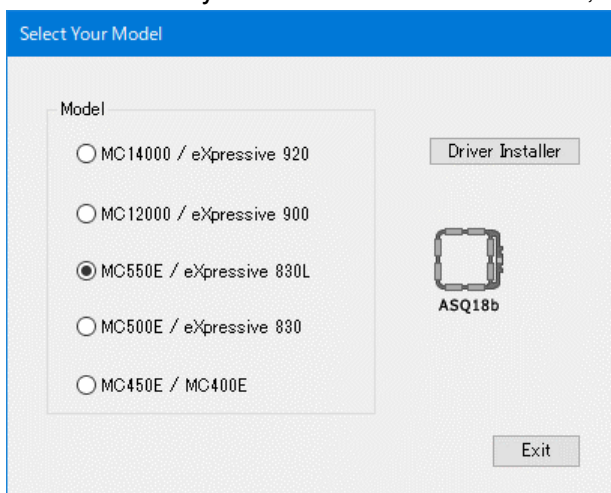
4. Click “Next”, and the update process will start.  
※User Account Control will appear. Click “Yes”.



- When the update is completed, click “Finish”.

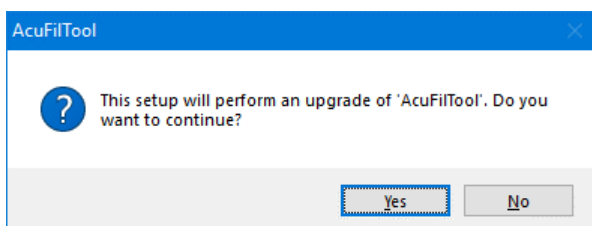


- Select your sewing machine from the "Select Your Model" dialog. If you need to install the USB driver, click "Driver Installer". If the PC already has the USB driver installed, click "Exit".

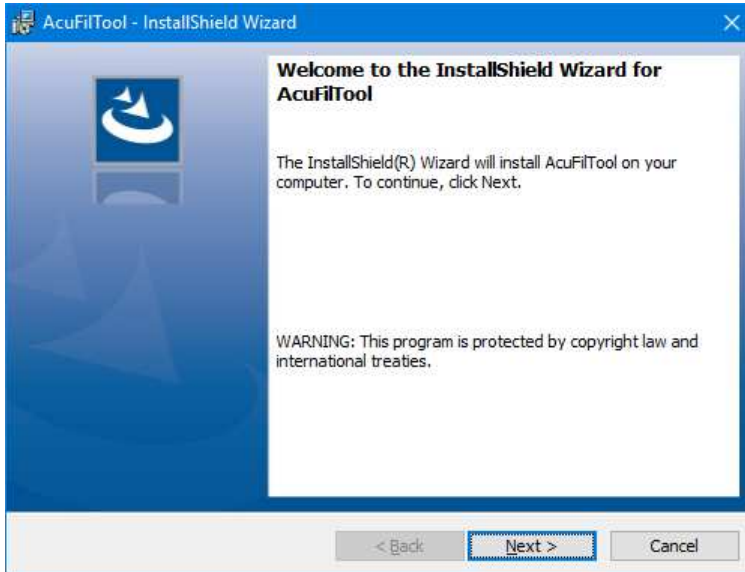


**When updating from Version 1.00**

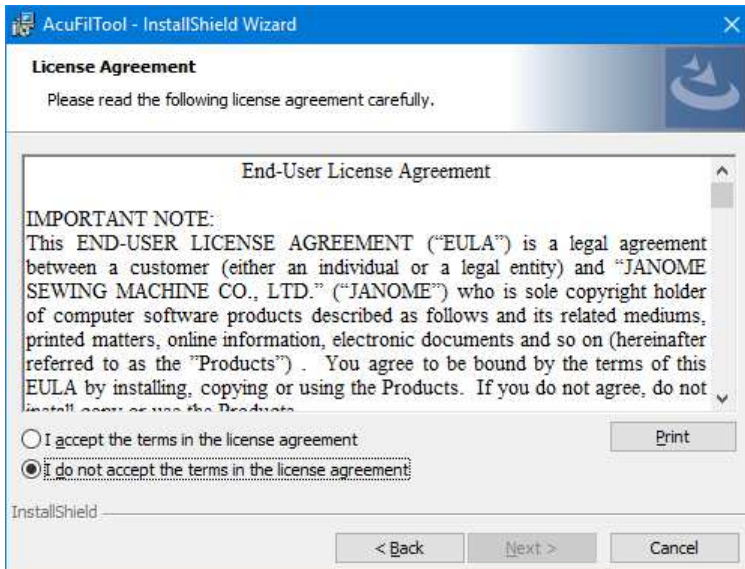
- Download the file from the website and save it on your PC.
- Double click on the “AcuFilTool230.exe” file.
- Click “Yes”.



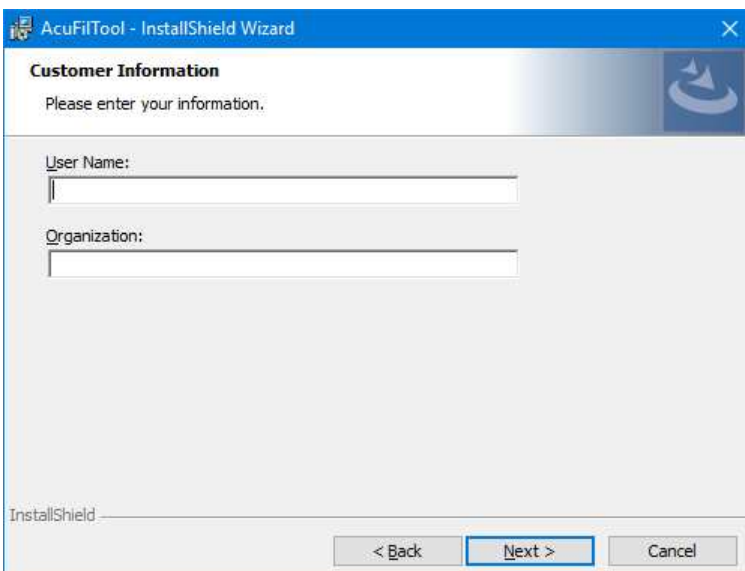
- Click "Next".



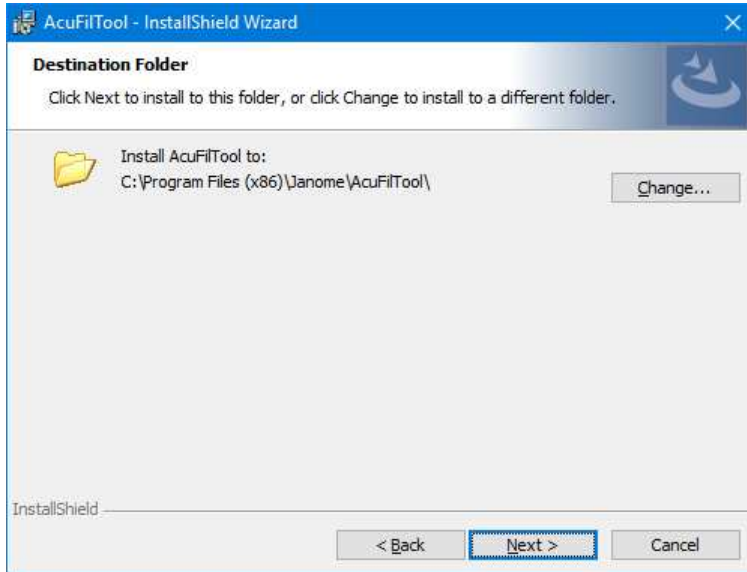
- Read the end user license agreement (EULA) and check "I accept the terms in the license agreement" if you agree. Click "Next".



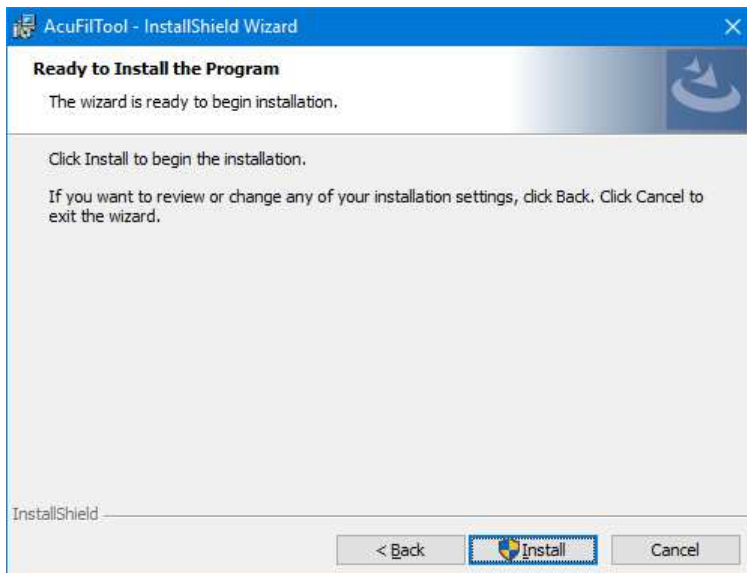
- Enter a user name and click "Next".



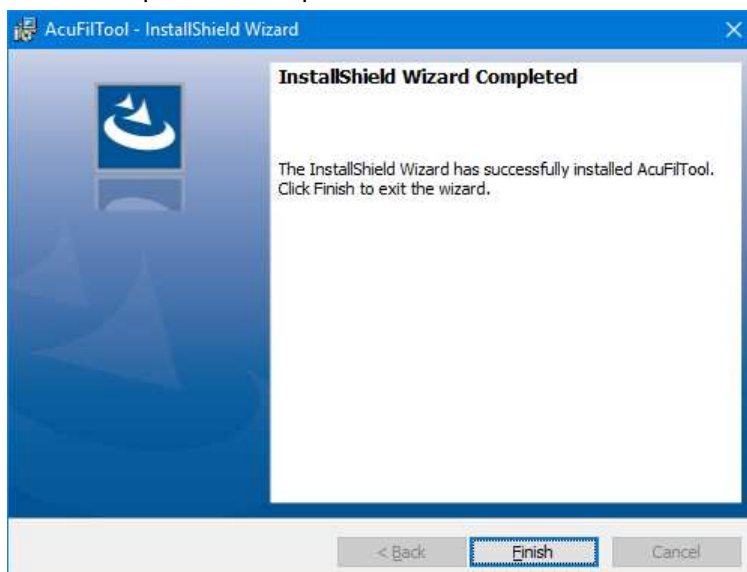
- Click "Next" if you accept the "AcuFilTool" installation location.



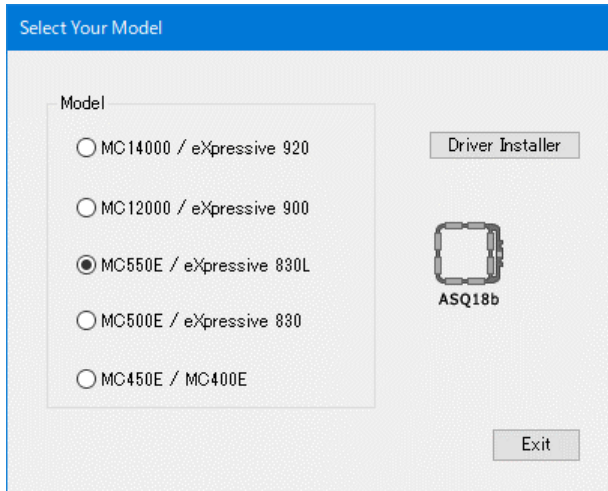
- Click "Install" to start installation.



- When the update is completed, click "Finish".



10. Select your sewing machine from the "Select Your Model" dialog. If you need to install the USB driver, click "Driver Installer". If the PC already has the USB driver installed, click "Exit".



Finish