

JANOME

Cutwork Embroidery with Sample Designs



TABLE OF CONTENTS

PREPARATION	1
Fabric	1
Stabilizer	1
Cutwork needle	1
 CUTWORK EMBROIDERY WITH SAMPLE DESIGNS	 2
 Example-1: Cut and Embroider	 2
Opening a cutwork design on your machine	2
Stitching the stabilizing run	2
Replacing cutwork needle	2
Cutting the fabric	3
Stitching the embroidery design	3 - 4
 Example-2: Embroider and Cut	 4
Stitching the embroidery design	4
Cutting the fabric	4
 Example-3: Fill Cutwork Opening with Organdy	 5
Stitching the stabilizing run	5
Cutting the fabric	5
Attaching a piece of organdy	5
Stitching the embroidery design	5
 Example-4: Creating an Applique Piece	 6
Stitching around the applique piece	6
Cutting out the applique piece	6
 Example-5: Applique Embroidery	 6
Attaching the applique piece	6
Stitching the embroidery design	6
 Example-6: Combine Border Designs	 7
Printing template sheets and marking the centerlines	7
Stitching the flower motif	7
Stitching the border trim	7 - 8
Marking the next centerlines	8
Stitching and cutting the next designs	8

PREPARATION

Print out this manual and keep it handy along with the instruction manual of your machine or save the PDF file on your PC / Mac.

Sample cutwork designs are available in the "Cutwork Designs" folder on the download site.

(https://www.janome.co.jp/e/e_downloads/cutwork.html)



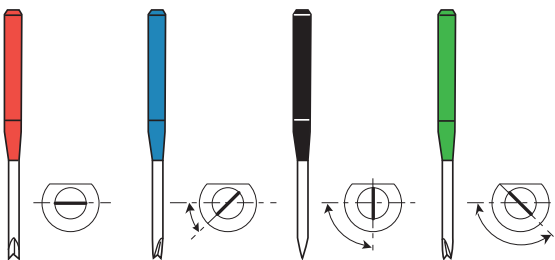
Save the sample designs on your PC / Mac.

Fabric:

Dense woven fabrics of natural material, such as cotton, hemp, soft denim or sheeting fabrics are recommended for cutwork.

Stabilizer:

Use iron-on type stabilizers. Sticky type stabilizers are not recommended as residue of the glue sticks to the needle and bobbin holder which may cause stitching problems. Heat-away stabilizers and water soluble stabilizers are recommended for stitching around cut holes.



Cutwork needle:

Each cutwork needle is color coded to identify the cutting angle.

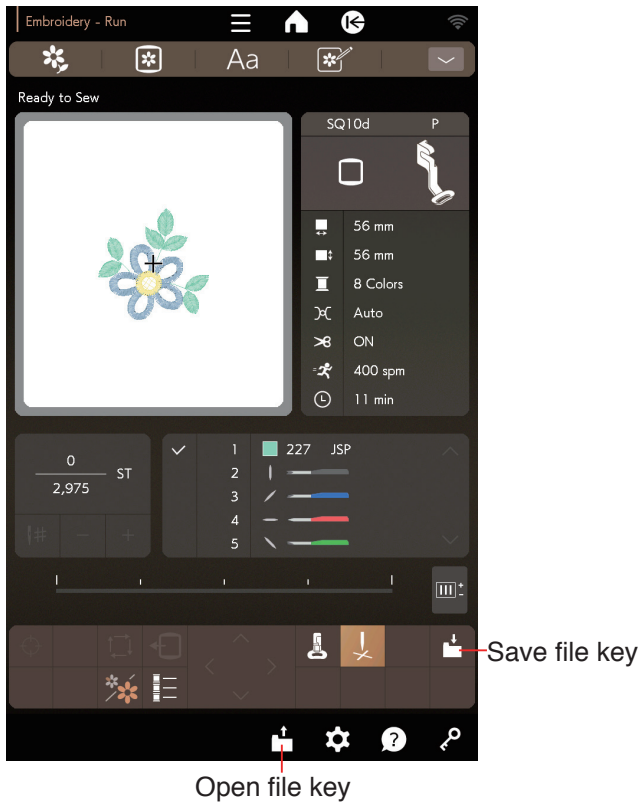
Red: 0 deg.

Blue: 45 deg.

Black: 90 deg.

Green: 135 deg.

The following instructions describe the operation on the Continental M17.



CUTWORK EMBROIDERY WITH SAMPLE DESIGNS

Example-1: Cut and Embroider

Opening a cutwork design on your machine

Copy sample design CUT_4_01 to a USB flash drive or send the sample design to your machine via Direct PC / Mac Link (refer to instruction manual of your machine).

NOTE:

The filename extension varies depending on a transfer method between the machine and PC / Mac (with USB flash drive / with wireless LAN or Direct PC / Mac Link).

- Using USB flash drive: .JPX data (download from the download site)
- Using wireless LAN or Direct PC / Mac Link: .Draw data (download from the download site)

Data will not be recognized correctly when the filename extension is wrong.

Set up your machine for embroidery. Press the file open key to open the sample design from the USB flash drive. You can send the sample design via wireless LAN or Direct PC / Mac Link with the Artistic Digitizer Jr., the ready to sew window of the sample design will open.

NOTE:

Values of number of stitches on the touch panel can be different from this manual, but there is no problem with the sewing quality.

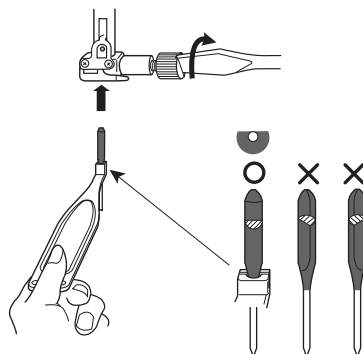
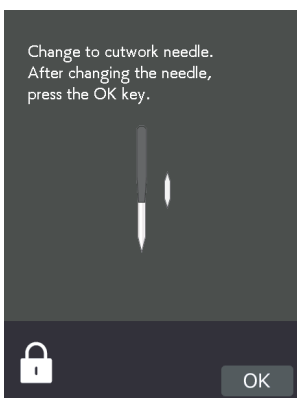
NOTE:

Cutwork designs cannot be opened or saved in the editing mode. To save the cutwork design, press the save file key in the ready to sew window.



Stitching the stabilizing run

Stitch the first section. This is a stabilizing run for cutting. When the stabilizing run is finished, the LCD shows a message that advises you to replace the needle with the black cutwork needle.

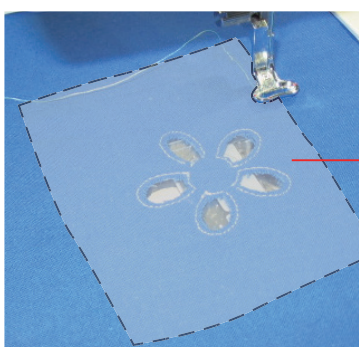
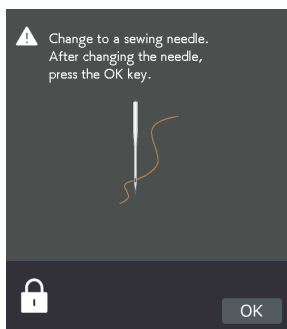
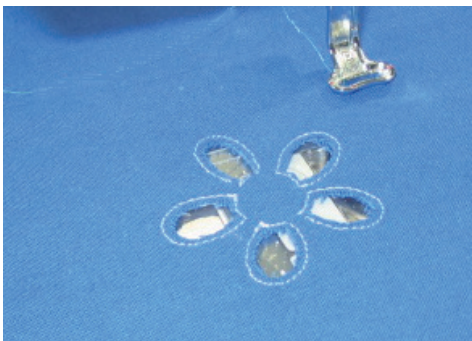
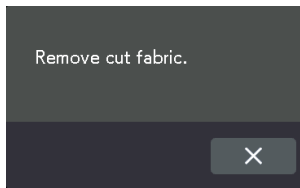


Replacing cutwork needle

The machine is automatically locked when the message appears.

Remove the sewing needle from the needle clamp. Select the black cutwork needle and insert its tip into the cutwork needle holder with the flat side of the needle facing to the rear.

Insert the cutwork needle into the needle clamp and tighten the needle clamp screw firmly with a screwdriver.



Attach a stabilizer on the wrong side of the fabric.

Cutting the fabric

Press the OK key and the LCD will show the ready to sew window for vertical cutting (90 degrees).

Start the machine to cut the vertical portion. When the vertical cutting is finished, the LCD will show the message for changing to the next cutwork needle.

Replace the cutwork needle and cut diagonal portion (45 degrees).

NOTE:

When removing the cutwork needle, be sure to use the cutwork needle holder as the needle point has a sharp edge.

Continue cutting until all the cutting angles are completed and the message appears. Press the OK key to proceed. Remove the hoop from the carriage but do not unhoop the fabric.

A few spots along the cutting line are left uncut to prevent the fragments of the cut fabric from falling into the needle plate hole. Clip the uncut spots and remove the fragments.

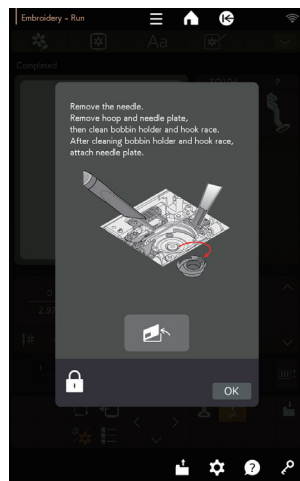
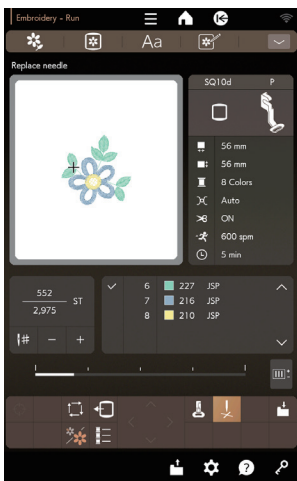
Stitching the embroidery design

Replace the cutwork needle with the sewing needle and thread the machine, then press the OK key.

Set the hoop to the carriage again.

Attach a heat-away stabilizer or a water soluble stabilizer on the wrong side of the fabric. The size of the stabilizer must be 3 cm larger than the overall design size.

Baste the stabilizer as necessary by Trace and baste (refer to the instruction manual of the machine).



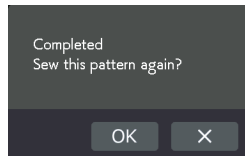
Stitch sections 6 to 8.

After the last section is completed, a message for cleaning the hook area will appear.

Remove the hoop and clean the hook area (refer to the instruction manual of the machine).

NOTE:

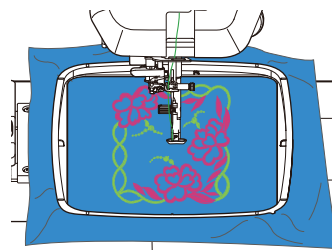
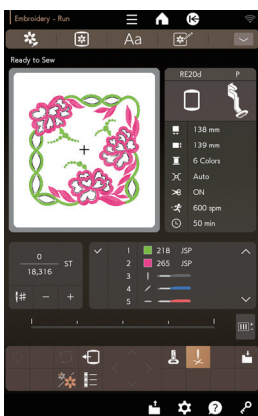
Make sure to clean the hook area every time when the message appears.



Press the OK key, if you wish to stitch this design again, otherwise press the X key.



Remove the basting stitches and tear away the stabilizers. Use an iron to melt away the remains of the heat-away stabilizer.



Example-2: Embroider and Cut

Open sample design CUT_1_01 on your machine.

In this design, the fabric will be cut after the embroidery design is stitched out.

Stitching the embroidery design

Stitch sections 1 and 2.

Cutting the fabric

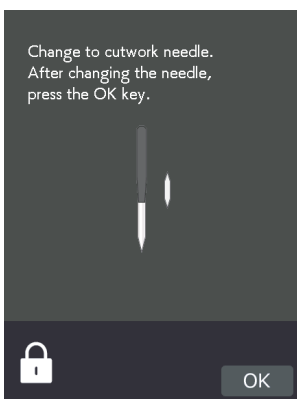
The message will appear when the second section is completed.

Replace the sewing needle with the cutwork needle. Press the OK key.

Start the machine and cut the fabric in the same way as example-1.

Remove the hoop and fabric.

Clean the hook area and press the OK key.



Example-3: Fill Cutwork Opening with Organdy

Open sample design CUT_1_02 on your machine.
This design uses organdy as a backing for open area.

Stitching the stabilizing run

Stitch section 1. This is stabilizing run for cutting.

Cutting the fabric

Replace the sewing needle with the cutwork needle. Press the OK key.

Start the machine and cut the fabric in the same way as example-1.

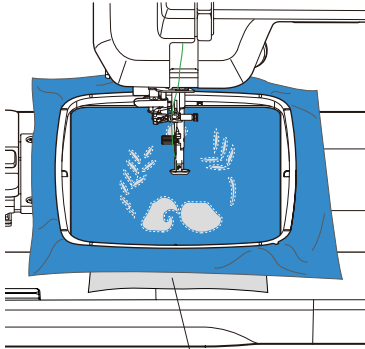
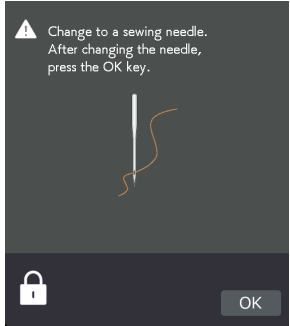
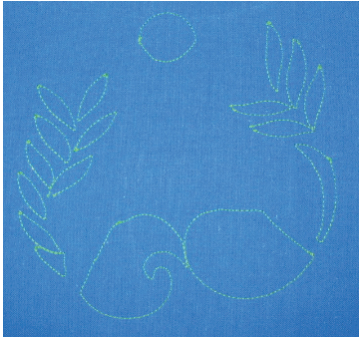
Attaching a piece of organdy

Replace the cutwork needle with the sewing needle.
Prepare a piece of organdy 3 cm larger than the overall embroidery design size.
Attach the hoop to the carriage and place a piece of organdy under the fabric. Baste the organdy to the fabric by Trace and baste (refer to instruction manual of the machine).

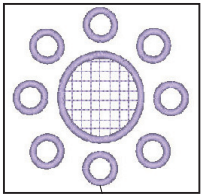
Stitching the embroidery design

Stitch sections 6 to 9 in the same way as example-1.
Remove the basting stitches and trim away excess organdy with scissors.

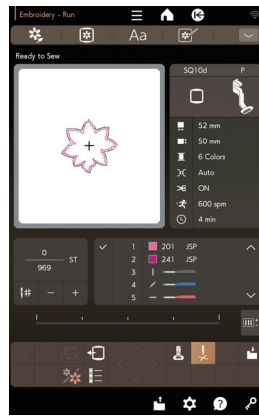
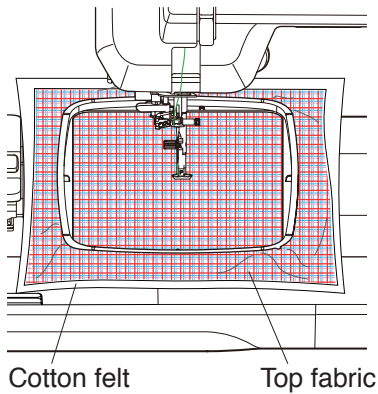
Use a piece of organdy for CUT_4_05, same as CUT_1_02.



Organdy



CUT_4_05



Example-4: Creating an Applique Piece

Creating an applique piece for applique embroidery.

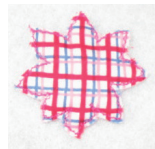
Open sample design CUT_4_02 on your machine. An applique piece can be cut out automatically with this design.

Stitching around the applique piece

Prepare top fabric and cotton felt that adds a dimensional effect to the applique. Set the top fabric and felt to the hoop.

Baste the layers by Trace and baste (refer to instruction manual of the machine).

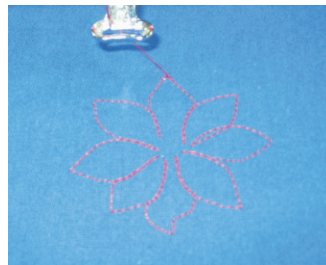
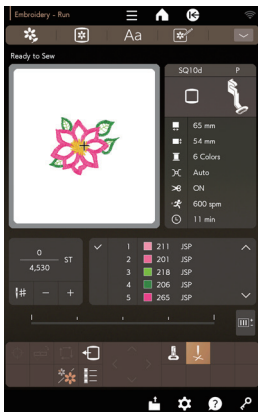
Stitch sections 1 and 2. The first section is stabilizing run for cutting and the second section is zigzag stitches around the applique to seam the top fabric and cotton felt together.



Cutting out the applique piece

The message will appear when the second section is completed. Replace the sewing needle with the cutwork needle. Press the OK key.

Start the machine and cut the fabric in the same way as example-1. Remove the applique piece from the layers. This method can also be used for creating fabric broaches.



Example-5: Applique Embroidery

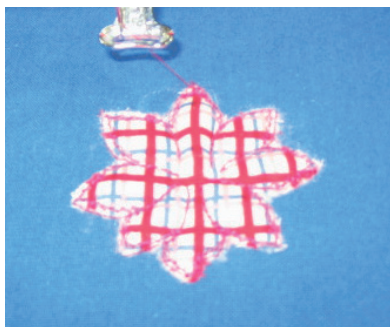
Attaching the applique piece and embellishing with the embroidery design.

Prepare the applique piece created in example-4. Open sample design CUT_4_03 on your machine.

Attaching the applique piece

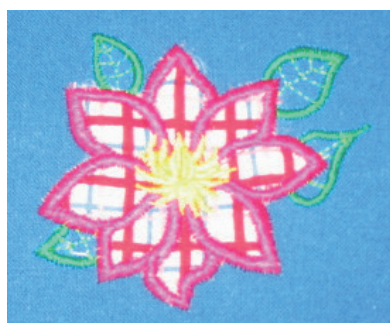
Stitch section 1 on the base fabric. This is an outline for the applique placement.

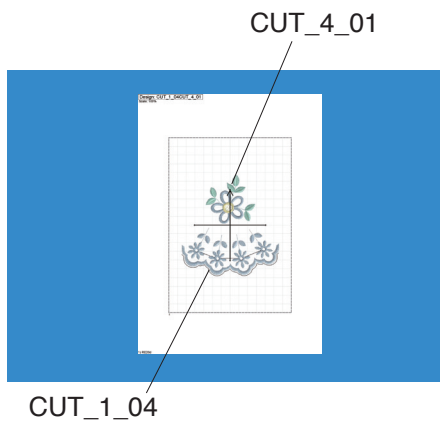
Place the created applique piece on the base fabric. Align the applique piece with the outline stitches and fix it in place. Stitch section 2 to sew the applique piece to the base fabric.



Stitching the embroidery design

Stitch sections 3 to 6 to stitch embroidery design on and around the applique piece.





Example-6: Combine Border Designs

Printing template sheets and marking the centerlines

Start the Artistic Digitizer Jr. and open the CUT_4_01. Drag-and-drop the CUT_1_04 into the editing window. Arrange the layout of the CUT_4_01 and CUT_1_04. (CUT_4_01 should be sewn first.) Save the data of arranged patterns.

Print the template sheet.

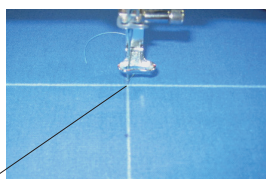
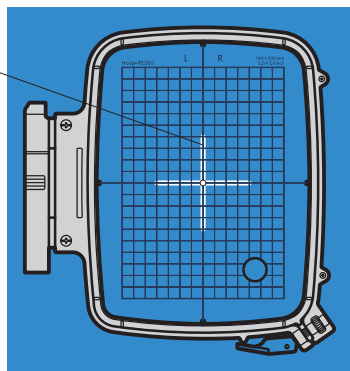
Check only Center lines, 3D-preview, Fill areas, Hoop and Grid line on Print Preview.

Place the template sheets on the fabric.

Mark centerlines of designs on the fabric with a washable marker.

Lay the inner hoop with the template on the fabric, matching the centerlines and the centerlines on the fabric. Set the fabric and inner hoop into the outer hoop and stretch the fabric in the hoop.

Centerlines on the fabric



The center of the centerlines

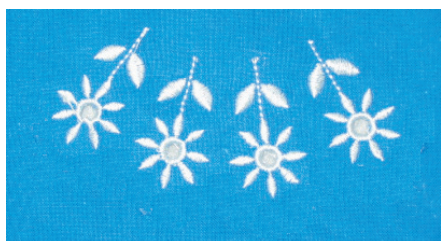


Stitching the flower motif

Open the designs on your machine.

Move the needle position to the center of the centerlines with jog keys.

Stitch and cut the design in exactly the same way as example-1.



Stitching the border trim

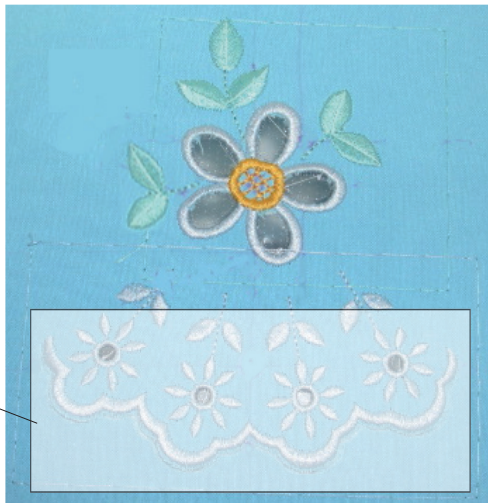
Stitch section 9 (motif of 4 little flowers).

Replace the sewing needle with the cutwork needle. Cut out the center of flower motifs.



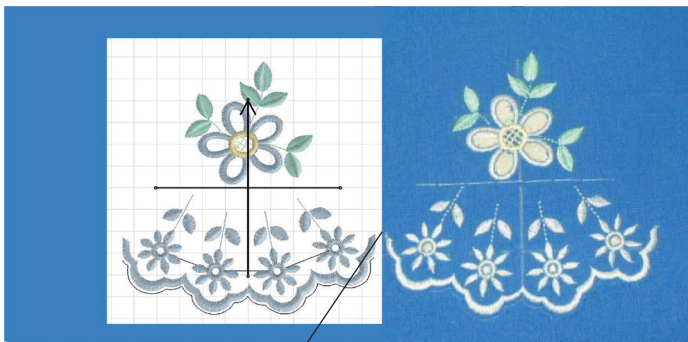
Replace the cutwork needle with the sewing needle.
 Stitch section 14 (border trim).
 Replace the sewing needle with the cutwork needle.
 Cut the fabric along the border trim.

NOTE:
 Do not remove the cut fabric.



Sticky type stabilizer

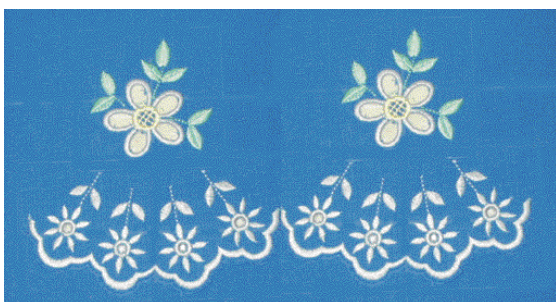
Remove the fabric from the hoop. Attach a sticky type stabilizer to the back side of the fabric to line the cut area of the border trim.



Align the end points

Marking the next centerlines

Print the template sheet.
 Check only Center lines, 3D-preview, Fill areas, Hoop and Grid line on Print Preview.
 Cut out the unnecessary margin part of the template.
 Place the template sheet on the fabric. Align the end points of template sheet and stitched design. Mark the centerlines for the next set of the border design.
 Set the fabric to the hoop by aligning the centerlines of the fabric and template.



Stitching and cutting the next designs

Stitch and cut the flower motif in the same way as the first step.



Repeat these steps to combine the border designs.
 Print the template of only CUT_1_04 and sew only CUT_1_04 patterns as needed.
 Clip the all uncut spots and remove the cut fabric.