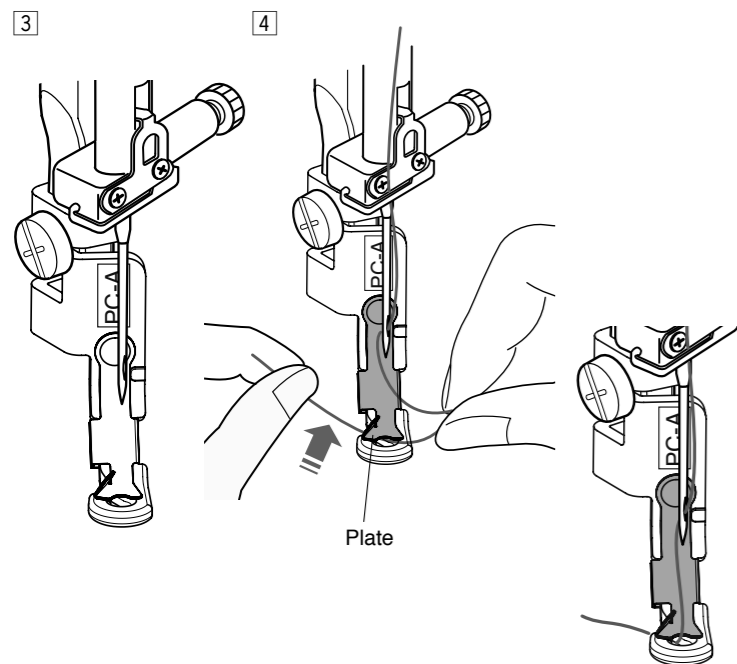
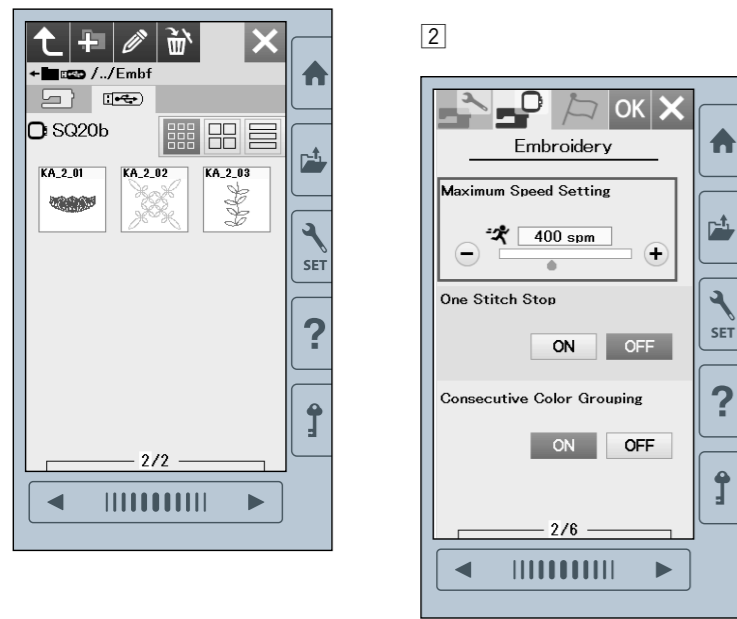
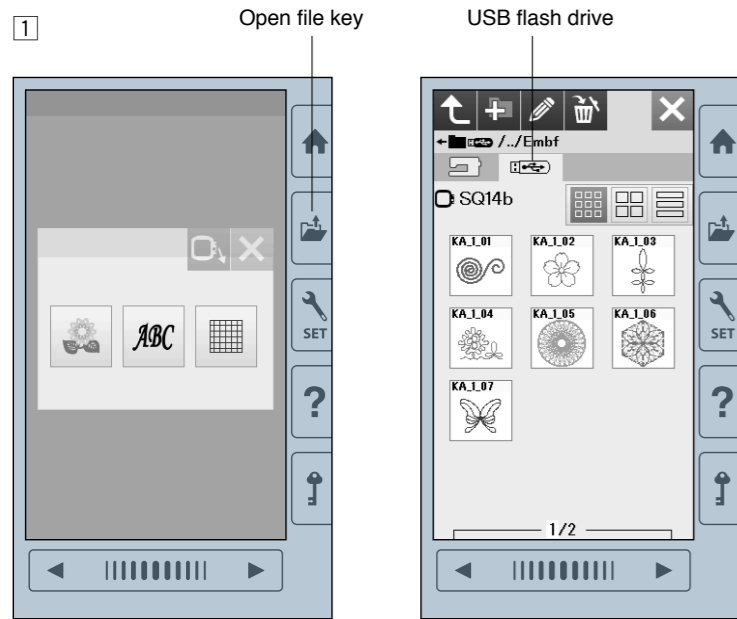


# HOW TO USE THE EMBROIDERY COUCHING FOOT



The embroidery couching foot allows you to embellish your work with yarn.  
Use embroidery couching foot PC-A for weight 3 yarn (light) and use couching foot PC-B for weight 4 yarn (medium).

- \* Make sure to do a sewing test first, as yarn thickness can vary even among the same yarn weight.
- \* Use the same color as the yarn for the bobbin and needle threads for the best results.

1 Insert the USB flash drive containing data for the embroidery couching designs into the USB port on the machine.  
Press the Open file key and select the USB flash drive icon.  
Select the desired couching design from the folder.  
[Sample] KA\_1\_01

\* Do not use the single color sewing key for couching designs as yarn cannot be used in this way.

2 To safely sew with yarn, change the maximum embroidery sewing speed from 400spm to 500spm in the Embroidery Setting Mode. Sew as slow as possible for the best result.

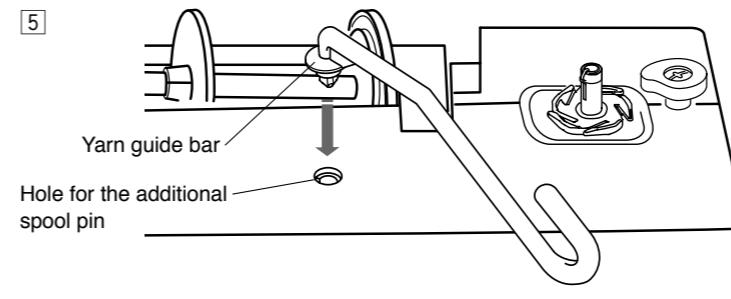
\* For details regarding machine settings, refer to the instruction manual included with your sewing machine.

**CAUTION**  
Press the lockout key to lock the machine when attaching/removing the presser foot or threading threads and yarn. Not locking the machine can cause injury.  
Do not lower the needle while the foot is raised, otherwise the needle clamp may hit the foot and cause injury or breakage.

3 Attach the embroidery couching foot to the machine.  
Turn the handwheel toward you after lowering the presser foot.  
Make sure that the needle passes through the center of the foot.

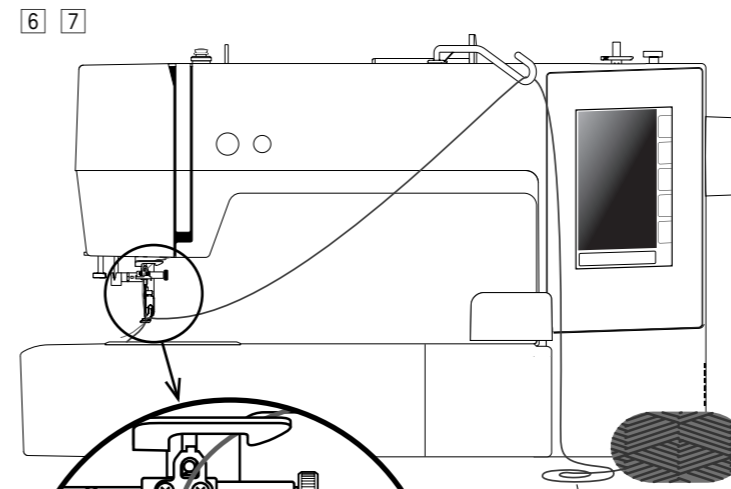
\* For details regarding changing the foot, refer to the instruction manual included with your sewing machine.

4 Hold the thread with both hands.  
Slide the thread under the plate, and pass it through the presser foot hole.



5 Insert the yarn guide bar into the hole for the additional spool pin.  
Turn the yarn guide bar to the right until it stops.

\* Attach the yarn guide bar so that it faces the LCD screen.

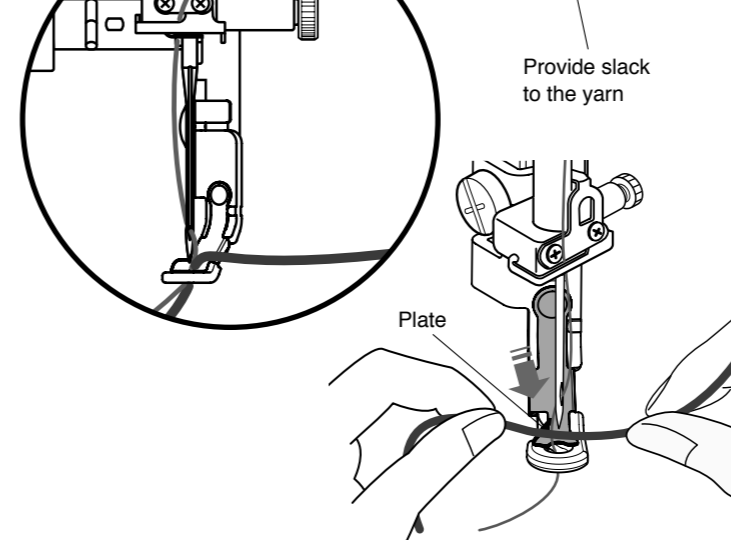


6 Pass the yarn through the yarn guide bar.

7 Hold the yarn with both hands.  
Pass the yarn over the top of the diagonal area on the plate and slide it into the presser foot hole.

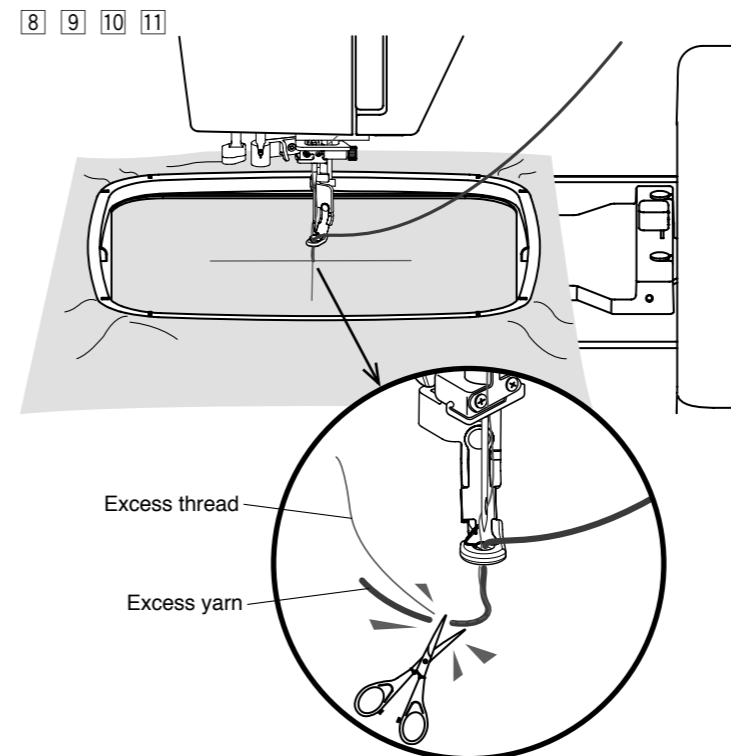
\* Unwind the ball of yarn on a sewing table to provide slack and ensure smooth feeding without tangling.

**CAUTION**  
The knots may appear at some points of a ball of yarn. Make sure to keep a close eye not to feed the knot of yarn into the presser foot hole while sewing.



Provide slack to the yarn

Plate



8 Set the fabric attached with the stabilizer to the hoop.  
Attach the hoop to the carriage.

\* Refer to the instruction manual included with your sewing machine for details on how to set the fabric and how to attach/remove the hoop.

\* Make sure to do a sewing test first.

9 Press the start/stop button and sew 5 to 6 stitches.  
Press the start/stop button again to stop the machine.

10 Cut the excess yarn and excess thread from the starting point.

11 Press the start/stop button to start sewing.

\* Stop the machine and trim the excess yarn when the yarn jumps to prevent it from interfering with the foot. Start sewing again only after doing so.