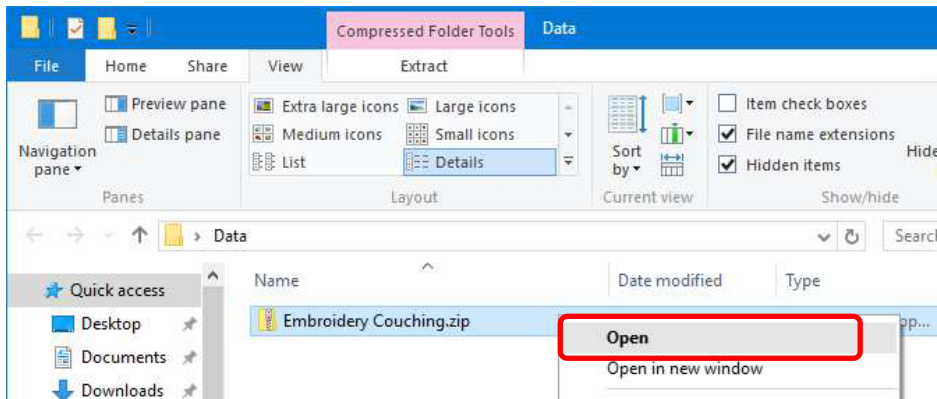


Using Embroidery Couching Designs

You can sew embroidery couching designs using the MC550E, MC500E, MC450E or MC400E with the optional embroidery couching feet.

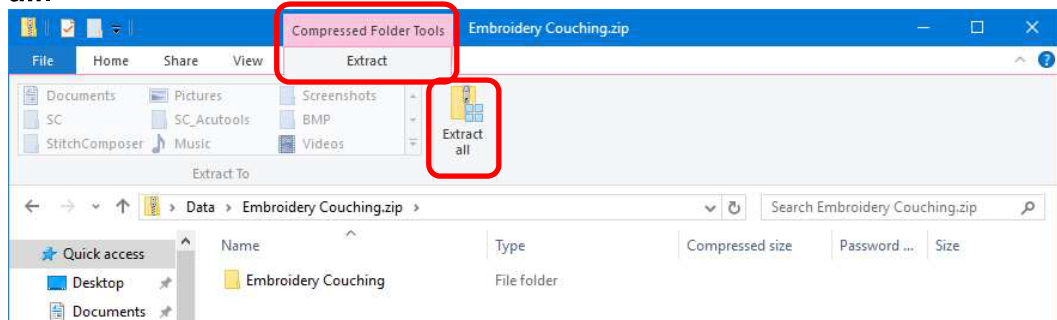
*Embroidery couching designs (zipped) need to be downloaded from the web page.

1. Download the zip file and save it on your PC.
2. Right-click the zip file and select **Open**.



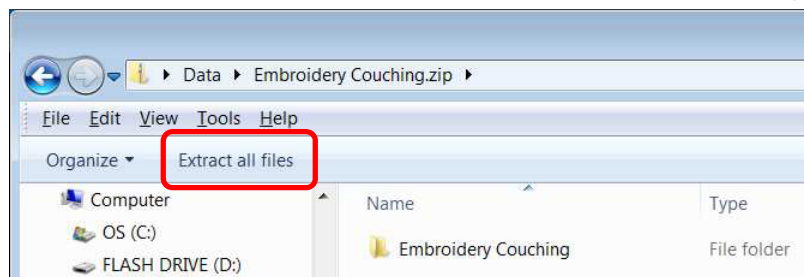
3. Open the **Extract Compressed (Zipped) Folders** dialog following the procedure shown below.
 - a. Windows 10/8.1

Select **Extract** from the **Compressed Folder Tools** tab, and then click **Extract all**.

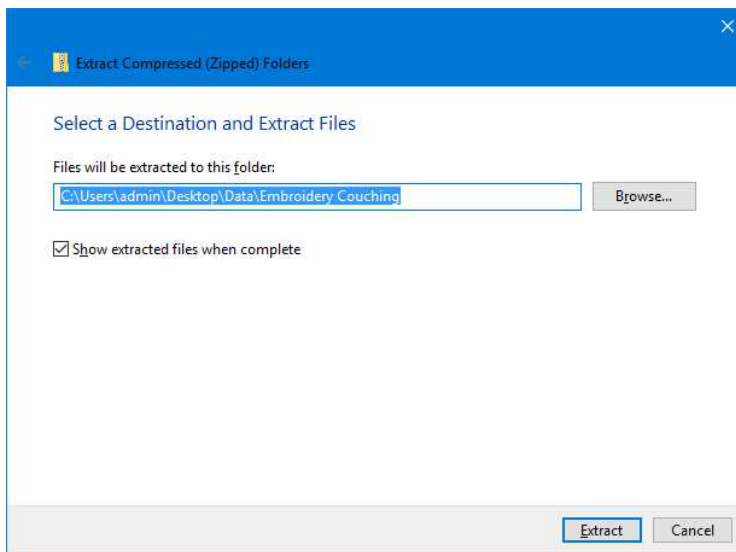


- b. Windows 7

Click on the **Extract all files** button in the window that opens.



4. Select the location where you want the folder to be placed, for example, the Desktop. Select **Show extracted files when complete**. Then click on the **Extract** button. The transferred file will be displayed in a window.

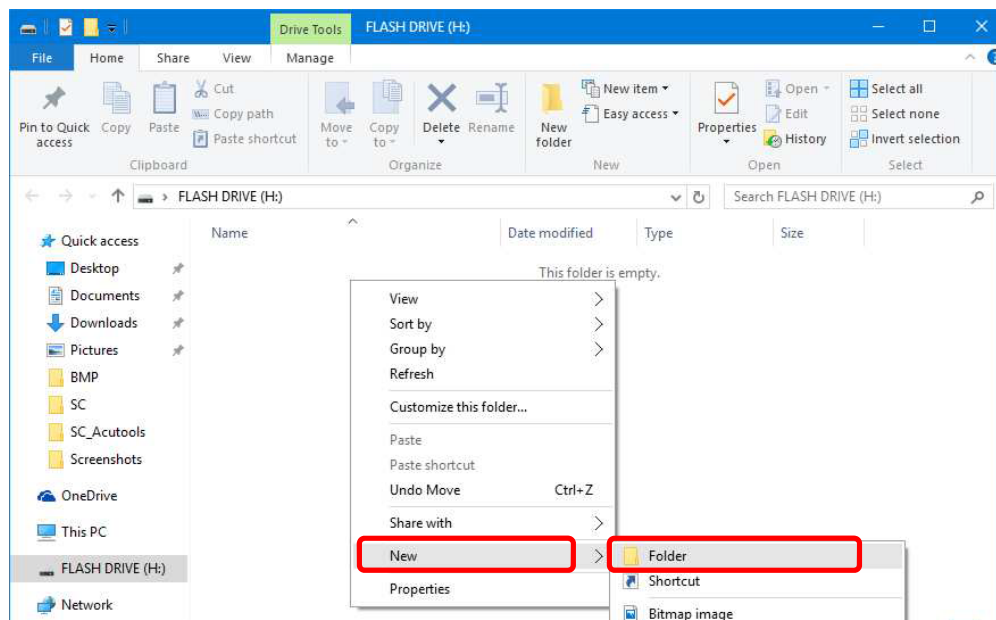


5. Insert a USB flash drive into a USB port on your PC.
6. If the “EMB” folder has been created on the root of the USB flash drive, proceed to step 7.

If not, create the “EMB” folder following either a. or b. below.


- a. Creating the “EMB” folder using your PC

Select the root of the USB flash drive in Explorer. Right-click **New – Folder** and create a folder named “EMB”.



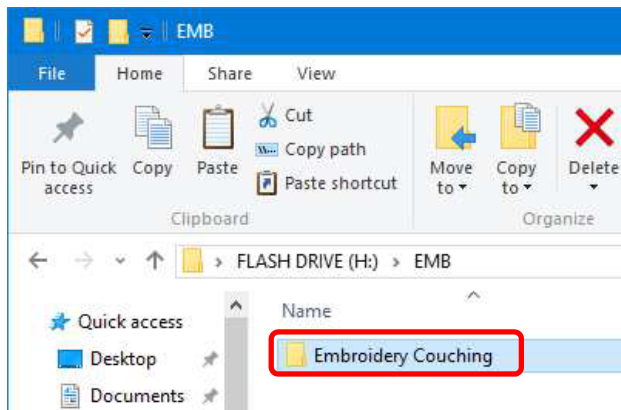
- b. Creating the “EMB” folder using the MC550E/MC500E/MC450E/MC400E
 Remove the USB flash drive from the PC. Insert the USB flash drive into the MC550E/MC500E/MC450E/MC400E and turn it on. The “EMB/Embf” folder for embroidery designs is automatically created in the USB flash drive.

CAUTION:

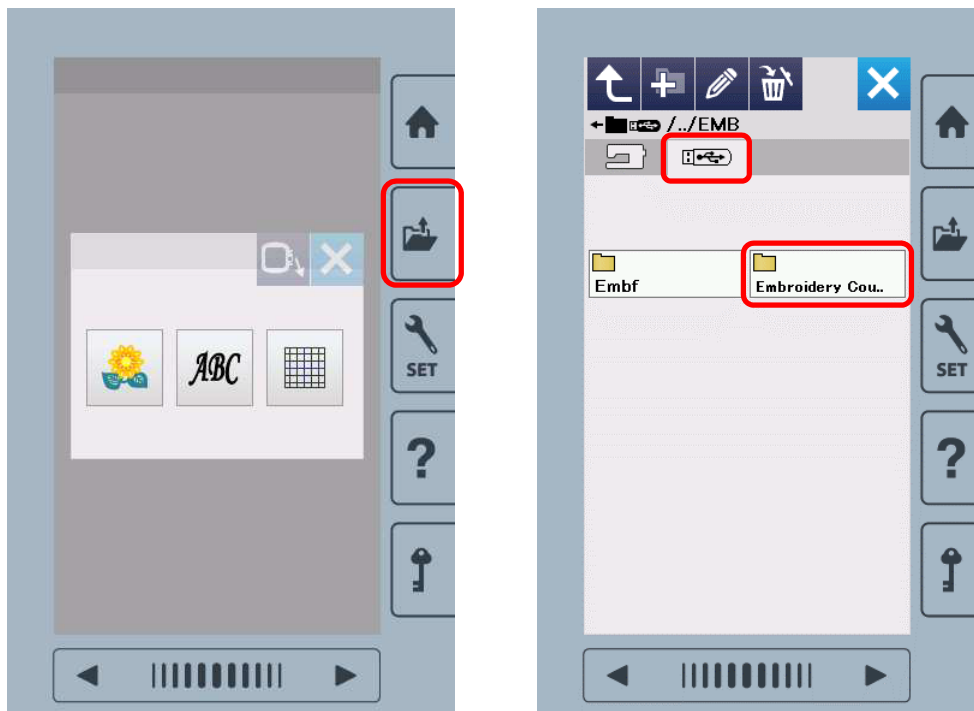
Do not turn off the MC550E/MC500E/MC450E/MC400E while the  mark is displayed.

Insert the USB flash drive into the USB port of the PC again.

7. Copy the extracted “Embroidery Couching” folder to the “EMB” folder.



8. Remove the USB flash drive from the PC and insert it into the MC550E/MC500E/MC450E/MC400E.
 9. Push the “File Open” key and select the “Embroidery Couching” folder in the USB flash drive to use the couching designs. (For further detail, refer to the machine’s instruction manual.)



NOTE:

The procedures used in these instructions to extract zip files are done so according to standard Windows functions. If you are using any other tool, refer to the instructions for that tool.

If the MC550E/500E/MC450E/MC400E does not recognize the USB flash drive, format the USB flash drive and start from step 6, or start from step 6 with a different USB flash drive.