

JANOME BULLETIN

Magnetic Clamp Attachments

The “Magnetic Clamp Attachment” is an additional item for ASQ27d Hoop of the Continental M17. This item enables you to adjust the position of designs in the ASQ27d hoop using AcuSetter App. By taking a photo of the embroidery hoop with the fabric inserted in it, the design can be easily arranged while checking fabric conditions.



Part No. 868-415-006

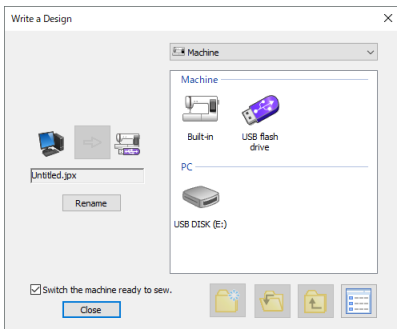
Step 1 To attach the item

Align the center hooks of the magnetic clamp attachment with the top rail of the magnetic clamp. Slide the attachment until it stops, and press down the edge of the magnetic clamp attachment to attach it.

Step 2 To prepare the APP & PC Software

Download AcuSetter app to your tablet (iOS, Android™).
Download AcuFilTool to your PC and install it if you wish to use AcuFilTool, which allows you to stipple your quilt design with a professional finish.
Before using the App and software above, update your sewing machine to the latest version.
The detailed instructions of the above downloads can be found in the Magnetic Clamp Attachment package.

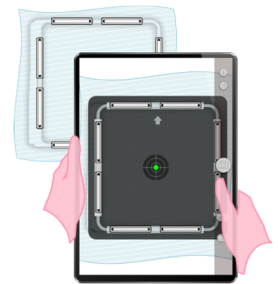
How to use the magnetic clamp for an AcuFil design



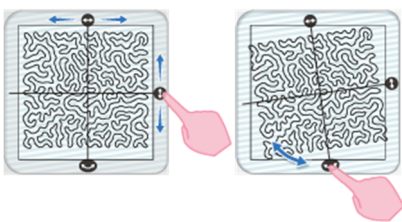
1. Import the quilt design using AcuFilTool to the sewing machine via USB flash drive or USB cable.



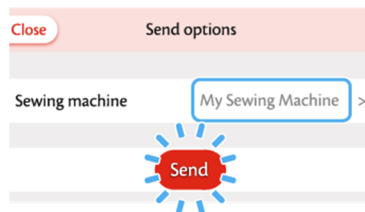
2. Receive the design from your sewing machine to the latest version of AcuSetter.



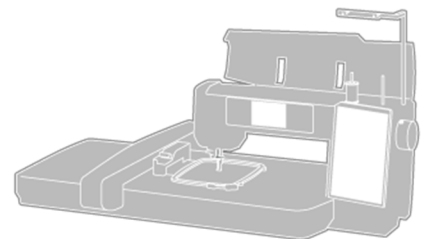
3. Take a photo of the entire ASQ27d with AcuSetter and adjust the hoop position.



4. Fine-tune the design position with AcuSetter.



5. Send the data to the sewing machine.



6. Start the machine and sew the design.