

JANOME BULLETIN

For 9 mm max. stitch width models

Lap-Seam Foot (Finished width 9 mm)

This foot can provide perfect looking and durable seams on medium-heavy weight to heavy weight fabrics. You can create beautiful lap-seams without ironing.

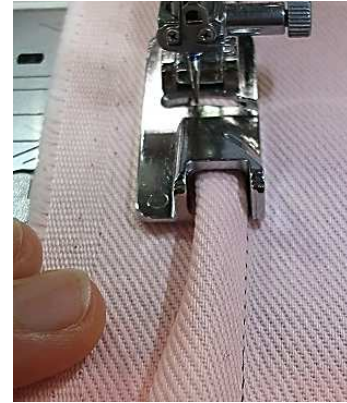


Part No. 202-463-007

Point 1 Finished to a width of 9 mm

With the guides and curves of the foot, fabric can be folded neatly with just a light touch.

9 mm wide flat felled seams can be created with the groove on the back side.



Back side of the foot

Point 2 Easy-to-see guidelines

Easy-to-see guidelines support making lap-seams.



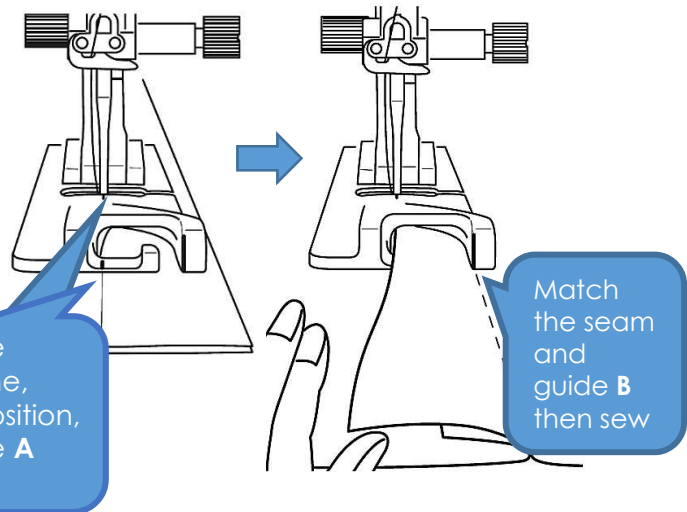
Needle position

B

A

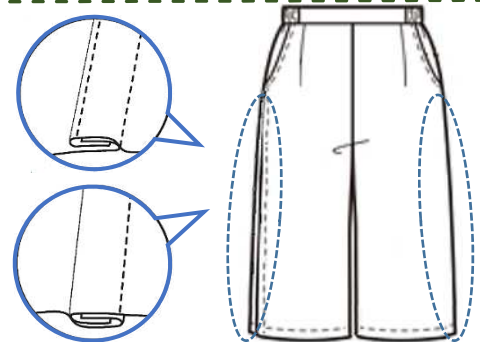
Match the finished line, needle position, and guide A then sew

Match the seam and guide B then sew



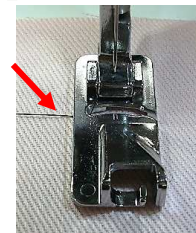
Point 3 Two kinds of finish

- 2 seam lines shown on the right side of the fabric: Place the wrong sides of the fabric together and sew.
- 1 seam line shown on the right side of the fabric: Place the right sides of the fabric together and sew.

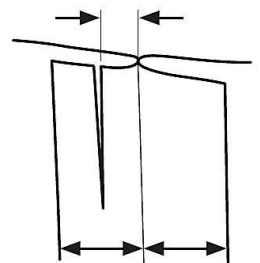


Tips How to finish neatly

- Place the needle thread to the left then start sewing.
- Cut to less than half of the seam allowance as shown in the figure to the right.



Cut to 5-7 mm



5/8 inch (16 mm) seam allowance