

Flower Stitch Attachment

The highly popular Flower Stitch attachment is returning and is now available in a blister pack! Even when using sewing machines without a large number of stitches, this attachment will allow you to produce unique and pretty flower designs and also eyelets, with ease.

Compatible with low-shank horizontal hook models.



Part No.: 202-261-003

Point 1 Many combinations!

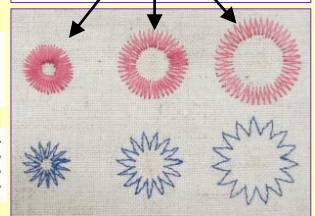
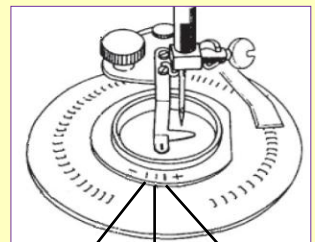
Simply by changing the size of the circle and the stitch width, you can sew various types of flowers. Moreover, by combining different types of flowers, you can create your own unique designs.



Stitch width: 5.0
Stitch: Zigzag stitch

1. Set the (+) mark to the setting mark and sew the outer pattern (zigzag stitch).

2. To create gradation, change colors.
3. Change the position of the setting mark so it is slightly closer to the (-) mark and sew a new color.
4. Repeat the above procedure with 2 more colors.



(Stitch width: 5.0)



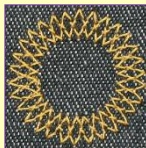
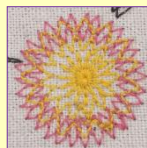
Stitch width: 5.0
Stitch: tricot stitch

Needle: twin needle
***7mm zigzag models only**

By using a twin needle, you can sew 2-colored flowers beautifully. (The picture above has layered tricot stitch on the inside.)



By sewing double tricot stitches, the finish looks like hand-stitching.



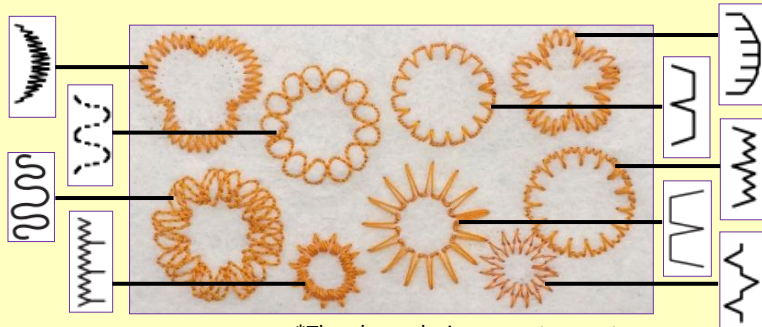
Stitch width: 5.0
Stitch: tricot stitch

After sewing the first pattern, turn the disc together with the fabric by three, six or nine notches. (Leave the presser foot lowered.)

Notches



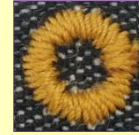
By changing the stitches, you can also enjoy making a variety of designs. Use your creative flair to make completely original flowers! (We would suggest you do a test sew as there are stitches that will match at the start and end position and those that won't.)



*The above designs may turn out differently depending on the type of sewing machine being used.

Point 2 You can also sew eyelet designs!

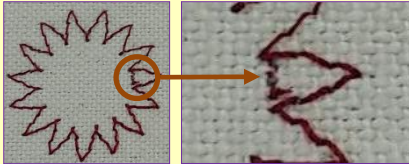
By using this attachment, you can sew eyelets even with sewing machines that are not equipped with eyelet stitches.



Stitch: Zigzag stitch
Stitch width: 3.0~2.0
Minimum circle size: (-)

Point 3 When using a computerized sewing machine...

By sewing the initial locking stitches on a separate piece of fabric, your flowers will turn out more beautifully.



*Computerized sewing machines will automatically sew several locking stitches when sewing begins. We would suggest that you sew the initial locking stitches on a separate piece of fabric so that these locking stitches don't appear on your flowers.



First step

Locking stitches only (several times)



Second step

Sew flower pattern

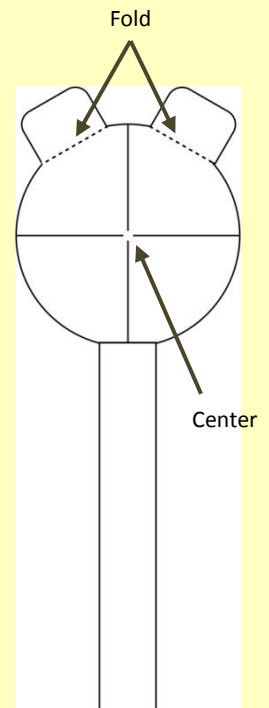
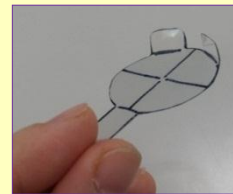
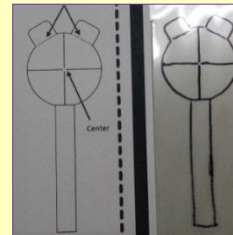
- Cut thread (*don't use thread cutter button).
- Change the fabric.

How to make a template.

By using a template, it's much easier to form design combinations. The template is good for people who have difficulty placing fabric on the center of the disc when matching designs.

What is required: • A clear plastic sheet (the easily foldable type)
• A permanent marker
• Scissors

1. Print out this bulletin in its actual size (A4).
2. Draw the template onto the clear plastic sheet.
3. Cut along the lines with scissors.
4. Fold at right angles on the dotted lines.



Template

How to use the template.

1. Make a mark at the center of the flower.
2. Insert the template between the attachment and the fabric, matching the template with the inner side of the attachment.
3. Match the center of the template to the markings and remove the template making sure the fabric doesn't slide.
4. Lower the presser foot and sew the pattern. Follow the same procedure to sew further layers of patterns.

