

# ACCESSORIES CATALOG

for BLISTER PACKS

**JANOME**





# ADDING TO YOUR SEWING ENJOYMENT



Janome accessories help make your sewing more comfortable and enjoyable. Each of our accessories has been developed to be easy to use and give beautiful results so that you can sew with confidence knowing it is a Janome. The first step in cultivating your sewing skills is choosing the right tools. Let this catalog guide you for the projects you may have in mind and serve as inspiration for your new ideas.

## TABLE of CONTENTS

INTRODUCTION _____	3
JANOME QUALITY _____	8
CATALOG OF ACCESSORIES	
■ for GENERAL SEWING MACHINES ____	14
■ for OVERLOCKERS _____	36
■ for COVER STITCH MACHINES ____	40
■ for PROFESSIONAL OVERLOCKERS and COVER STITCH MACHINES ____	45
■ for HIGH SPEED MACHINES ____	48
■ NEEDLES _____	55
■ OTHER ACCESSORIES _____	59
INDEX _____	63

# INTRODUCTION

## | Key Information of JANOME sewing machine

01

### Maximum Zigzag Width

---

The maximum zigzag width of stitches is from 5 mm to 9 mm depending on the sewing machine.

### High Shank and Low Shank of Presser Foot Holder

02

---

High shank means that the presser foot holder is installed at a higher position. Most sewing machines with embroidery features and/or the AcuFeed system are equipped with the high shank type of presser foot holder. Low shank means that the presser foot holder is installed at a lower position.

03

### AcuFeed System

---

AcuFeed Flex is a feature only available on premium Janome sewing models. The system uses Upper Feed Teeth in conjunction with Lower Feed Teeth to gently move multiple layers of fabric through the machine. The Upper Feed Teeth move with the fabric as the Lower feed teeth move, feeding both the top and bottom layers of fabric at the same time. There are three variations of AcuFeed Flex feet available in the Janome range: Twin, Single and Professional.

# JANOME sewing machine Compatibility Quick Reference Guide

Use this quick reference guide to determine compatibility of an accessory with your Janome sewing machine.



**A** Embroidery & Sewing models  
(7 mm width)



**B** Embroidery only models



**C** Computer models  
with AcuFeed system  
(7 mm width)



**D** Computer models  
(7 mm/5 mm width)



**E** Top-loading  
(Horizontal Rotary Hook) models  
(6.5 mm width)



**F** Top-loading  
(Horizontal Rotary Hook) models  
(5 mm width)



**G** Front loading  
(Oscillating hook)  
models



**H** Overlockers  
\*excl models 203,888



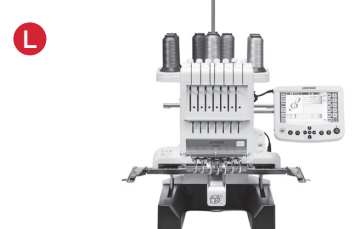
**I** CoverPro models



**J** High speed straight stitch models



**K** Needle punching model



**L** Multi-needle models



**M** Combined overlock and  
cover stitch models



**N** Embroidery & Sewing models  
with AcuFeed (9 mm)



**O** Embroidery & Sewing models  
(9 mm width)



**P** Computer models with AcuFeed  
(9 mm width)



**Q** Computer models  
(9 mm width)

For further information,  
please refer to  
the page 5 to 6.

# JANOME sewing machine Compatibility Chart

	Features	Max. zigzag width	Shank	AcuFeed system	Model Name							
A	Embroidery & Sewing models (7 mm width) and SKYLINE S3	7 mm	High	No	<b>SKYLINE S3</b>	<b>MC1000</b>	<b>MC5000 MC5700</b>	<b>MC8000</b>	<b>MC9000</b>	<b>MC9500</b>	<b>MC9700</b>	<b>MC10000/10001</b>
					863	819	834	830	832	853	857	850
B	Embroidery only models				<b>MC100E</b>	<b>MC200E</b>	<b>MC350E/300E</b>	<b>MC550E 500E 450E/400E</b>				
					815	856	852	864				
C	Computer models with AcuFeed system (7 mm width) and MC6500P	7 mm	High	Yes	<b>HMC7700QCP</b>	<b>MC6600P</b>	<b>MC6500P</b>					
					858	846F	846A					
D	Computer models (7 mm/5 mm width)	7 mm	Low	No	<b>MC5200</b>	<b>MC4900QC</b>	<b>MC4800</b>	<b>MC3500/3000</b>	<b>DC4030</b>	<b>3160QDC 2160DC/2030DC</b>	<b>5300QDC 5270QDC 5120QDC DC7100/DC6030 5060QDC/DC3200</b>	<b>DC4100</b>
					844	847	841	840	807	808	809	842
E	Top-loading (Horizontal Rotary Hook) models (6.5 mm width)	6.5 mm	Low	No	<b>6019QC/6125QC</b>	<b>EasyJeans 22 MyStyle 22</b>	<b>HD2200 MyExcel 18/23</b>	<b>Décor 5124/5024/5018</b>	<b>MyExcel4014 4018/4023/4123</b>	<b>MS5027/MS5021 CS5031/SC5021</b>		
					503	654	753	757	751	505		
F	Top-loading (Horizontal Rotary Hook) models (5 mm width)	5 mm	Low	No	<b>Sewist 625E 525S/521 725S/721</b>	<b>FD216/212/206 Sew Mini Platinum</b>	<b>Jem Gold2</b>	<b>Jem Gold</b>	<b>Harmony 4045/4052</b>			
					507	508	661	660	502			
G	Front loading (Oscillating hook) models	5 mm	Low	No	<b>L-392/372</b>	<b>L-393/373</b>	<b>423S/415/405</b>	<b>JR1012</b>	<b>3012/3016/3022</b>	<b>311</b>	<b>1580LX</b>	<b>920</b>
					731	721	303	743	306	311	748	304
H	Overlockers				<b>990 90th Anniversary</b>	<b>8002D</b>	<b>9102D</b>	<b>ML644D</b>	<b>ML454D Sailing Line</b>	<b>ML213</b>	<b>ML634D/1110DX DreamLock 70D EzyLock604D</b>	<b>ML744D</b>
					789	792	793	791	779	790	788	794
I	CoverPro models				<b>900CP</b>	<b>1000CPX 2000CPX</b>	<b>CP3000P</b>					
					795	796	778					
J	High speed straight stitch models				<b>1600P</b>	<b>HD9P</b>						
					767C	767F						
K	Needle punching model				<b>FM725</b>							
					725							
L	Multi-needle models				<b>MB-4</b>	<b>MB-4S</b>	<b>MB-7</b>					
					770	770	771					
M	Combined overlock and cover stitch models				<b>1200D</b>	<b>1100D</b>						
					797A	797C						
N	Embroidery & Sewing models with AcuFeed (9 mm)	9 mm	High	Yes	<b>HMC15000</b>	<b>HMC14000</b>	<b>HMC12000</b>	<b>SKYLINE S9</b>	<b>CM17</b>			
					862A	862F	859A	862SA	868A			
O	Embroidery & Sewing models (9 mm width)	9 mm	High	No	<b>MC9900 MC9850</b>							
					861							
P	Computer models with AcuFeed (9 mm width)	9 mm	High	Yes	<b>SKYLINE S7</b>	<b>SKYLINE S6</b>	<b>HMC9450QCP HMC9400QCP</b>	<b>HMC8900QCP</b>	<b>HMC8200QC</b>	<b>MC6700P</b>	<b>CM7P</b>	<b>HMC9480QCP HMC9410QC</b>
					863	863	865	858F	858G	866	867	869A/AL
Q	Computer models (9 mm width)	9 mm	High	No	<b>SKYLINE S5</b>	<b>MC6650</b>						
					863	866						


	Features	Max. zigzag width	Shank	AcuFeed system	Model Name								
A	Embroidery & Sewing models (7 mm width) and SKYLINE S3	7 mm	High	No	<b>MC11000</b>								
					860								
B	Embroidery only models												
C	Computer models with AcuFeed system (7 mm width) and MC6500P	7 mm	High	Yes									
D	Computer models (7 mm/5 mm width)	7 mm	Low	No	<b>DC3018</b> <b>DC3030</b> <b>DC3060</b> <b>DC8350/8330</b>	<b>6260QC</b>	<b>Jem Platinum</b>	<b>TS100Q</b> <b>TS200Q</b>	<b>M50QDC</b> <b>M100QDC</b> <b>M200QDC</b>	<b>S-750</b>	<b>M30A</b>	<b>Sewist</b> <b>780DC</b> <b>740DC</b>	
					843	845	806	811	812	749	805	814	
E	Top-loading (Horizontal Rotary Hook) models (6.5 mm width)	6.5 mm	Low	No									
F	Top-loading (Horizontal Rotary Hook) models (5 mm width)	5 mm	Low	No									
G	Front loading (Oscillating hook) models	5 mm	Low	No	<b>RX18S</b>	<b>Harmony</b> <b>2039/2049</b>	<b>Jem Harmony</b> <b>1017</b>	<b>726</b> <b>670</b>	<b>729/72922S</b> <b>LR1122DX</b>	<b>523</b> <b>3022</b>	<b>1522</b>		
					722B	302	639	726	729	312	315		
H	Overlockers				<b>AT2000DP</b>								
					799								
I	CoverPro models												
J	High speed straight stitch models	7 mm	High	No									
K	Needle punching model												
L	Multi-needle models												
M	Combined overlock and cover stitch models												
N	Embroidery & Sewing models with AcuFeed (9 mm)	9 mm	High	Yes									
O	Embroidery & Sewing models (9 mm width)	9 mm	High	No									
P	Computer models with AcuFeed (9 mm width)	9 mm	High	Yes	<b>CM8P</b> <b>CM6</b>								
					867C/CL								
Q	Computer models (9 mm width)	9 mm	High	No									

# JANOME Accessory Catalog for Blister Packs Usage Guide


The following information is available for each accessory.

① Name
② Photo
③ Description

① BEADING FOOT
②
③



Sewing on strung beads and pearls has always been a tedious task but the beading foot now goes some small way to alleviating this and to add pleasure to embellishing. Popular for bridal wear, evening wear, smart/casual or crafts, the beading foot set is a blessing. There are two feet in the set : narrow groove for beads up to 2 mm in diameter and wide groove for beads 2.5 - 4 mm in diameter.


  
<https://youtu.be/3cbClxzTbo>

200-321-006	A CDEF	SET OF TWO FEET (narrow and wide)
202-097-006	NOPQ	BEADING FOOT (narrow)
202-098-007	NOPQ	BEADING FOOT (wide)

④
⑤
⑥

Example (BEADING FOOT)

④ Part Number

⑤ Compatible Model Category

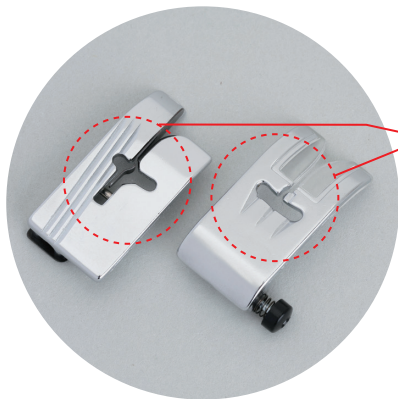
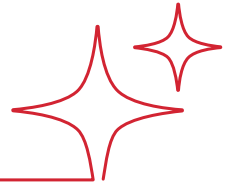
⑥ Remarks

\* Instructional video is available if there is a QR code that links to our official YouTube channel.

# JANOME QUALITY

## Janome Engineering and Craftsmanship for Better Quality Sewing

Exclusive features of Janome presser feet and accessories give you more control and accuracy for a higher quality finish. Calculated for effectiveness and full of originality, you can be assured that the history and tradition of quality Janome engineering is behind not only every sewing machine, but every presser foot and accessory as well.

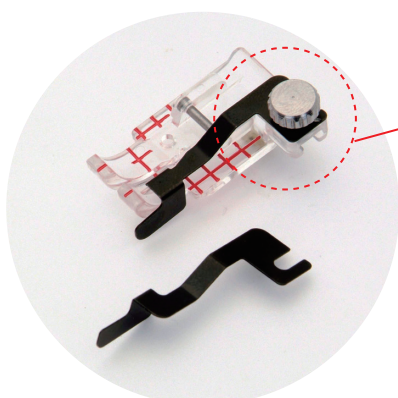
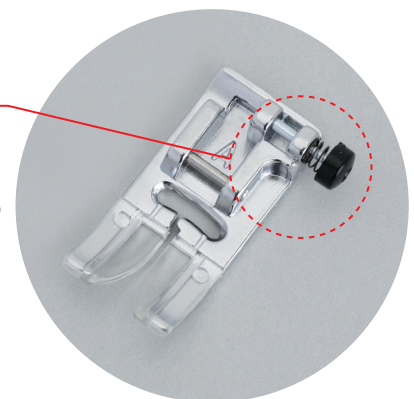


### Grooves guide fabric and thread

Special grooves on the underside of feet promote optimal fabric feed for best results. On the left, the diagonal grooves on the underside of the blind hem foot improve contact of the fabric with the center guide plate for more accurate blind hems. On the right, outlets are provided on the underside of the zigzag foot to help grab the thread as it exits and improve stitch quality.

### Button locks foot tilt

Who hasn't been frustrated by stitching bunching up before a thick seam? Although sewists normally appreciate the free tilt of a sewing foot, sometimes this feature can work against you when the foot comes up against a thick seam. To help you have perfect stitching over even the thickest seams, Janome provides a button on the zigzag foot that locks it horizontally parallel to the thread plate for smooth sewing over seams or other areas of significantly varying thicknesses. This feature can also be used at the beginning of sewing thick fabrics for a perfect start.



### Multiple functions in one presser foot set

From idea to reality. When our customers say, "Wouldn't it be handy if...", we listen to their ideas. The feet that come with the convertible FMQ set are interchangeable and the guide on the 1/4 inch clear-view quilting foot can be removed. This means the feet can be matched precisely to the purpose with 1 set providing a range of functions. That's why these items fulfill user needs and are proving to be popular.





## ACUFEED: Layered Fabric Feeding System

Janome truly integrates a built-in walking foot with a unique seven point feed dog system. Since the top layer is fed in perfect timing with the bottom layer, all fabrics move smoothly, even the slippery ones like velvet or thick layers of quilting fabric and batting, and heavy home dec yardage. Perfect feeding also means perfect alignment of patterns such as checks and plaids.

## ACUFEED FLEX™

In addition to the original twin type, single type feet can now be used, expanding sewing possibilities. AcuFeed Flex™ keeps your thickest, trickiest layers moving in perfect sync with the feed dogs. You're going to love the new AcuFeed Flex™ feet for stitching your fluffiest quilts, installing zippers, or matching seams!



The AcuFeed Flex™ fabric feeding system is fully detachable and easy to remove when you're not using it. Select the presser foot that best matches your sewing needs and attach. Simply snap off when not in use and store out-of-the-way in one of the ample accessory trays. Multiple twin type and single type feet are available to address different tasks.

\*The product named "AcuFeed" in this catalog is identical to the product named "Dual feed" in the sewing machine instruction manual.

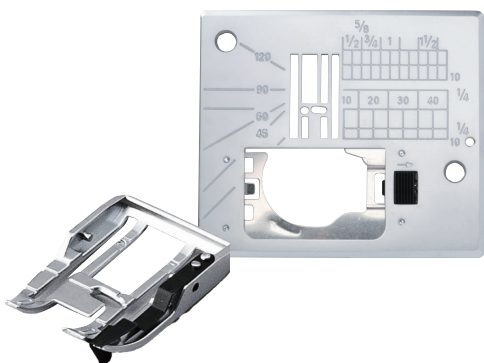




**AcuFeed (twin type):**

The twin type AcuFeed attachments give you superior stability by taking full advantage of a wider stance. Engage the exclusive AcuFeed fabric feeding system and feel your project moving together under the needle with perfect precision.

**ACUFEED 1/4 INCH SEAM FOOT AND NEEDLE PLATE**  
(Dual feed 1/4 inch seam foot and needle plate)



Guides edge of fabric to help you sew perfect 1/4 inch seams, especially useful for patchworking. The small needle hole on the needle plate prevents fabric from being pushed under the needle plate.

846-407-007	C*	ACUFEED 1/4 INCH SEAM FOOT AND NEEDLE PLATE (Dual feed 1/4 inch seam foot and needle plate)
-------------	----	---

\* Needle plate only compatible with MC6600P

202-031-002	C	ACUFEED 1/4 INCH SEAM FOOT (Dual feed 1/4 inch seam foot)
202-125-004	N P	ACUFEED QUILT PIECING FOOT (Dual feed quilt piecing foot)

**ACUFEED OPEN TOE FOOT (Dual feed open toe foot)**

Front of foot has been removed for clearer visibility when sewing. Great for applique, monogramming, cutwork and quilting.



846-410-003	C	
202-149-004	N P	

### ACUFEED DITCH QUILTING FOOT (Dual feed ditch quilting foot)

Center-position guide follows a seam line precisely, allowing perfect in-the-ditch quilting. Used in conjunction with various needle positions, it is also perfect for topstitching or under-stitching a facing.



846-413-006	C	
202-103-006	N P	

---

### ACUFEED STRAIGHT STITCH FOOT (Dual feed straight stitch foot)

The circle hole in the foot holds the thread in place and allows for a quality straight stitch. Using together with straight stitch needle plate is recommended.



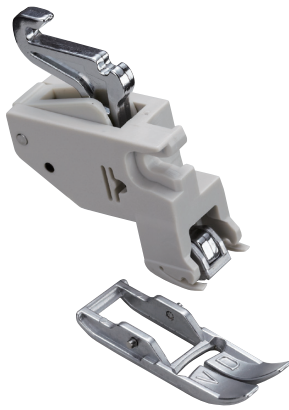
202-102-005	N P	
-------------	-----	--



**AcuFeed (single type):**

The single type of AcuFeed attachments let you get in close to sew a narrower area as well as the edges of cloth.

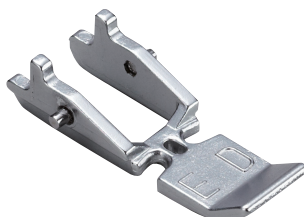
**ACUFEED FOOT WITH FOOT HOLDER (Dual feed plus foot with foot holder)**



This foot has the power to feed fabrics. It is especially effective for top-stitching on the edge of the fabric and stitching on narrow strips.

202-127-006	N P	
-------------	-----	--

**ACUFEED ZIPPER FOOT (Dual feed plus zipper foot)**



Zippers can be attached to plastic coated fabric, leather and any tricky to handle materials without any difficulty.

202-128-007	N P	
-------------	-----	--

## ACUFEED FLEX PROFESSIONAL GRADE FOOT (Dual feed plus professional grade foot)



This foot provides superior visibility and is great for curves and precise topstitching. It holds fabrics firmly in sync with the feed dogs to achieve professional results.

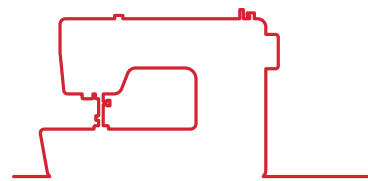
\* To use this accessory, you will need the HP needle plate that comes with your sewing machine.

202-415-004	N*1 P*2	
-------------	---------	--

\*1 For use with HMC15000, SKYLINE S9 Ver. 2.00 or later, CM17 only  
 \*2 For use with SKYLINE S7 Anniversary Edition, HMC9480QCP, HMC9410QC, HMC9450QCP, HMC9400QCP, CM8P, CM7P, CM6 only

# GENERAL SEWING MACHINE ACCESSORIES

General sewing machines are versatile and user friendly.  
Let Janome presser feet and accessories expand your sewing repertoire.





## STRAIGHT STITCH FOOT



The straight stitch foot is flat on the underside to provide even pressure against the feed dogs and it has a rounded needle hole which offers the benefit of more support around the needle to prevent skipped stitches and puckering.

<https://youtu.be/jYHUrYeTNSM>



200-331-009	A CDEF	
200-125-008	G	
202-083-009	NOPQ	

## APPLIQUE FOOT



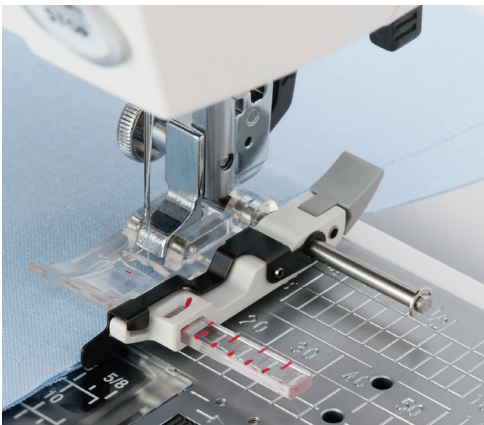
This presser foot is shorter than most for easier maneuvering around curves and corners when sewing applique pieces. Made of clear plastic for easier viewing as you sew.

<https://youtu.be/44-wyVT-2os>



202-023-001	A CDEF	
202-086-002	NOPQ	

## SLIDING GUIDE FOOT



This foot is ideal for seaming with a 5/8 inch allowance, and the adjustable seam guide allows precise edge stitching and hemming.

<https://youtu.be/3t0agQQ0Ik>



202-293-004	NOPQ	
202-218-005	A CDEF	

## ROLLER FOOT



As its name suggests this foot has rollers that roll against the fabric and act very much like the track on a bulldozer for sewing up and over heavy seams and uneven surfaces. Ideal for sewing heavy fabrics, the rollers move freely between the foot and the feed dogs so that the foot rides easily over varying thicknesses. Also used to sew sticky leathers and vinyl.

200-316-008	A CDEF	
200-142-001	G	

## DARNING FOOT



Sometimes referred to as the embroidery foot, the darning foot is used for 'free hand' embroidery and darning to ensure proper stitch formation, minimize skipped stitches and puckering and also protect your fingers while you move the fabric freely under the needle. Especially beneficial to those just learning how to do free hand embroidery. The open toe version greatly improves visibility of stitches and is especially popular with quilters.

200-325-000	A C	REGULAR
200-349-000	DEF	
200-127-000	G	
200-337-005	A C	OPEN-TOE
200-340-001	DEF	
202-314-002	NO PQ	

## ULTRA GLIDE NEEDLE PLATE & ULTRA GLIDE FOOT



Molded from a special resin that allows easier sewing of sticky materials, the ultra glide foot moves smoothly over faux leather, ultra suede, vinyl and even plastics on the ultra glide needle plate. This non-stick attachment glides along with no drag so you can sew on these surfaces just like they were regular fabric.

<https://youtu.be/xXUQ9v3dLSc>



200-329-004	A CDEF	ULTRA GLIDE FOOT
200-141-000	G	
202-091-000	NO PQ	
202-201-005	N* <sup>1</sup> OP* <sup>2</sup> Q	ULTRA GLIDE NEEDLE PLATE & ULTRA GLIDE FOOT
202-431-006	N* <sup>3</sup> P* <sup>4</sup>	

\*1 excl. CM17 \*2 excl. CM8P, CM7P, CM6  
\*3 For use with CM17 only \*4 For use with CM8P, CM7P, CM6 only

## HD ROLLER FOOT



An innovative new foot that can smoothly control materials such as leather and vinyl which are prone to catch. When using this foot, the base of the needle is clearly visible, making your work easier.

202-418-007	A C	J NOPQ	
-------------	-----	--------	--

## GATHERING FOOT



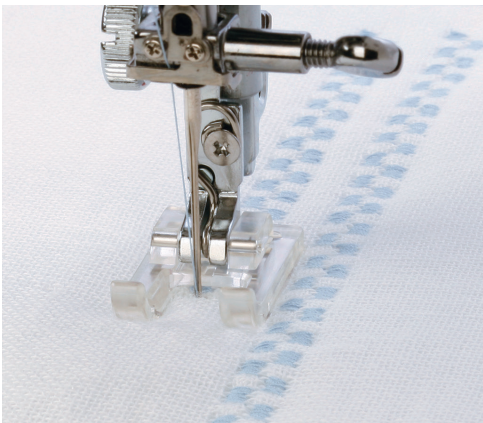
This foot is for creating soft gathers in lightweight fabrics. The underside of the foot is raised behind the needle and has a thick bar in front of the needle to gather and attach a ruffle onto a flat piece of fabric simultaneously. Use a ruffler to obtain a more dramatic gather.

<https://youtu.be/M7rvzWc8eg8>



200-315-007	A CDEF		
200-124-007	G		
202-096-005		NOPQ	

## CUSTOM CRAFTED ZIGZAG FOOT



The open toe on this foot allows a better view of the sewing in progress. This foot can be used for quilting, monogramming, applique, and cut work.

\* The product named "Custom crafted zigzag foot" in this catalog is identical to the product named "Open toe satin stitch foot" in the sewing machine instruction manual.

<https://youtu.be/CDJNQ8xfVbE>



200-137-003	A CDEF		
-------------	--------	--	--



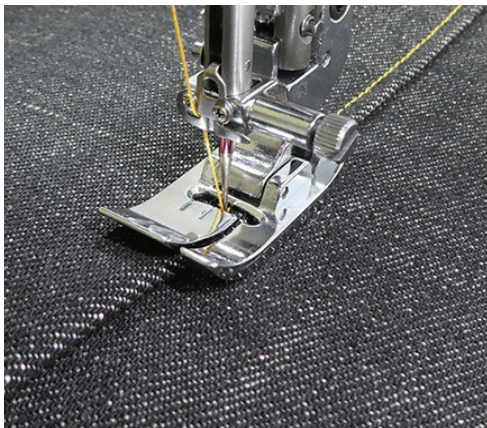
## BINDER FOOT



The binder foot is used to apply pre-folded bias binding tape or bias tape you have cut yourself to the edge of fabric in one easy step. It is equipped with a small funnel to fold and guide the binding over the fabric edge before it reaches the needle and can be used with either zigzag or decorative stitches as well as straight stitch. 10 mm to 14 mm bias tape can be used.

200-313-005	A CDEF	
200-140-009	G	
202-099-008	NOPQ	

## BI-LEVEL FOOT



This foot enables sewing at a constant width from the fold of the fabric. It guides your top stitching and edge stitching perfectly. Thick materials (e.g. wool, denim, tweed) can be finished.

202-504-001	A CD*1	
202-461-005	NOPQ	RIGHT BI-LEVEL FOOT
202-522-005	NOPQ	LEFT BI-LEVEL FOOT

\*1 excl. Jem Platinum, S-750 and M30A

## TAPING GUIDE FOOT



Use this foot for attaching tape to the edge of fabrics. Adjust the needle drop position with the thumb screw. Guide the fabric with the left hand and tape with the right hand.

202-310-008	NOPQ	
202-311-009	A CDEF	

## LAP-SEAM FOOT



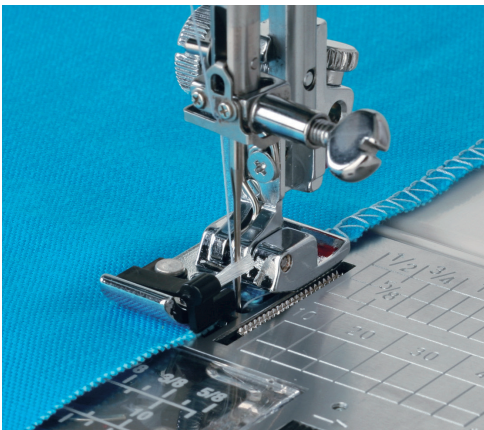
This foot can provide perfect looking and durable seams on medium-heavy weight to heavy weight fabrics. You can create beautiful lap-seams without ironing.

<https://youtu.be/kNbYuLv8fyU>



202-503-000	A CDEF	
202-463-007	NOPQ	

## OVEREDGE FOOT



Use with an overcasting stitch to allow thread to wrap around the edge of the fabric to prevent unraveling. The foot guides the fabric and keeps your edges flat by compensating for the lack of friction when the needle makes the right-most stitch.

200-132-008	G	
-------------	---	--

## BLIND HEM FOOT



Blind hemming can sometimes be a little bit tricky so the blind hem foot goes some way to helping improve this technique. The foot has a metal guide in the center and three grooves on the underside. During blind hemming, the fold of the fabric fits snugly against the guide in the foot for accuracy while the grooves underneath help to prevent unnecessary slipping. The needle swings over the metal guide creating slack in the upper tension so that the pick of the stitch is almost invisible.

<https://youtu.be/H7yWpMmlVck>



200-130-006	G	
-------------	---	--

## TRICOT FOOT



This foot prevents puckering and fabric slippage on stretch fabrics.

202-509-006	G	
-------------	---	--

## ZIPPER FOOT



Can also be used as piping foot for thicker piping including the heavy jumbo cord.

200-334-002	A C	SCREW ON
200-342-003	DEFG	

## CONCEAL® ZIPPER FOOT



Good quality ready to wear garments will often have an invisible zip fitted. These zippers are often neglected by the home dressmaker which is a pity because they can ensure success every time. Invisible zips are suitable for all fabrics from fine silk jersey through to suit weight wools and tweeds. The key is to get the needle as close to the fastener as possible, which this foot accomplishes by slightly unrolling the zipper just before the needle. Once fitted, a well sewn invisible zipper will merely look like part of the seam.

200-333-001	A CDEF	SNAP ON
202-475-002	G	
202-144-009	NOPQ	

CONCEAL is a registered trademark of YKK Corporation.



## HEMMER FEET



The hemmer foot, sometimes referred to as the rolled hemmer, is used to stitch the narrow rolled hems usually found on shirt tails, table linens and along the edge of frills. The hemmer is designed with a scroll shaped feeder on top and a straight groove on the underside which determines the width of the finished hem. The 4 mm/6 mm set will allow for the use of heavier fabrics.

200-326-001	A CDEF	HEMMER FEET SET (4 mm & 6 mm hems)
202-081-007	NOPQ	ROLLED HEM FOOT (4 mm)
202-080-006	NOPQ	ROLLED HEM FOOT (6 mm)
202-477-004	G	ROUND HEM FOOT

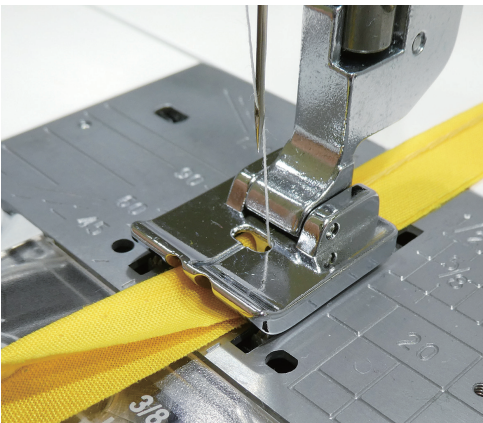
## PIPING FOOT



If ready made piping cord is not available or if you just want to make your own, the piping foot is ideal for the job. The piping foot (sometimes mistakenly referred to as the cording foot) is designed with two grooves on the underside and will hold and cover the cord when making piping tape. It can also be used for attaching piping. Maximum cord size is 5 mm.

200-314-006	A CDEF	
202-088-004	NOPQ	

## PIPING FOOT (NARROW)



This foot is used for piping with a cord diameter of about 2 mm. It is useful for making narrow piping tape using the same fabric as the piece of work, or for attaching piping tape to fabric.

202-502-009	A CDEF	
202-462-006	NOPQ	

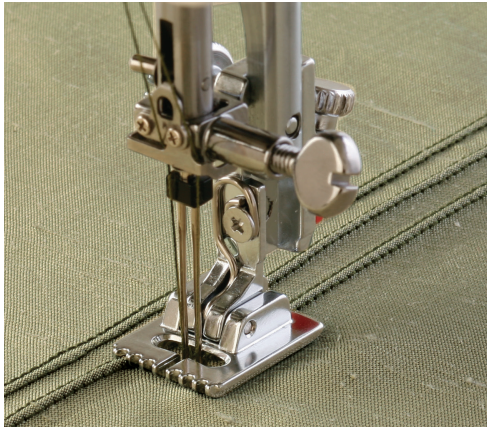
## RUFFLER



Rufflers have been around for a very long time and have changed very little over the years; they have however remained very popular. Although at first sight a ruffler may appear bulky and complicated, its innovative design actually makes it very easy to use. This design allows fabric to be ruffled or pleated to the desired fullness quickly and easily and also has the capability to vary the sizes of ruffles.

846-415-008	A CDEFG	
202-095-004		NOPQ

## PINTUCKING FEET



The pintucking foot is used with a 2 mm twin needle to create multiple rows of pintucks. The grooves on the underside of the foot make it easy to stitch several rows parallel and evenly spaced from each other.

200-317-009	A CDEF	SET OF TWO FEET (narrow grooved and wide grooved)
200-328-003	G	SINGLE FOOT (narrow grooved only)
202-094-003	NOPQ	PINTUCKING FOOT (narrow)
202-093-002	NOPQ	PINTUCKING FOOT (wide)

## PINTUCKING CORD GUIDES



The cord guide is attached in place of the clear plastic bobbin cover to feed perle cotton or other cord as you sew for easier corded pintucks. Two guides are included in the set: one for cord up to 1.5 mm in diameter and one for cord 1.5 - 2.5 mm in diameter.

Part Number	Package	Remarks	Compatible Models						
200-324-009	BP	Easy Set Bobbin System is not supported	MS5027 MS5021 CS5031 SC5021	Sewinst 625E 525S/521 725S/721	Easy Jeans 22 MyStyle 22	Jem Gold	Jem Gold2	MyExcel 4014/4018 4023/4123	HD2200 MyExcel 18/23
			505	507	654	660	661	751	753
			Décor 5124 5024 5018	Jem Platinum	DC4030	MC8000	MC9000	MC5700 MC5000	MC3500 MC3000
			757	806	807	830	832	834	840
			MC4800	DC4100	DC3018 DC3030 DC3060 DC8350	MC5200	MC4900	MC10000 MC10001	MC9500
			841	842	843	844	847	850	853
			MC9700						
			857						
202-213-000	BP	Metal Needle Plate with Easy Set Bobbin System is required	5300QDC 5270QDC	M50QDC M100QDC M200QDC	Sewist 780DC 740DC	MC1000	HMC8900QCP SE	HMC8200QCP SE	MC9900 MC9850
			809AU/AU2	812	814	819	858F2	858G2	861
			HMC14000 HMC15000 SKYLINE S9	SKYLINE S3/S5/S6/S7	HMC9450QCP HMC9400QCP	MC6700P MC6650	HMC9480QCP HMC9410QC	CM8P CM7P CM6	CM17
			862A2/A3/S	863	865	866	869	867	868

## BEADING FOOT



Sewing on strung beads and pearls has always been a tedious task but the beading foot now goes some small way to alleviating this and to add pleasure to embellishing. Popular for bridal wear, evening wear, smart/casual or crafts, the beading foot set is a blessing. There are two feet in the set: narrow groove for beads up to 2 mm in diameter and wide groove for beads 2.5 - 4 mm in diameter.

<https://youtu.be/3cbClxzXTbo>



200-321-006	A CDEF	SET OF TWO FEET (narrow and wide)
202-097-006	NOPQ	BEADING FOOT (narrow)
202-098-007	NOPQ	BEADING FOOT (wide)



### 3-WAY CORDING FOOT



The 3-way cording foot will hold one, two or three fine cords or threads. Because they are attached to the foot, the required design can be easily followed and the cords are perfectly placed. A variety of utility or decorative stitches can be sewn over the cords to couch them onto base fabrics. The choice of cord, thread and stitch are all contributory factors to the final effect.

200-345-006	A CDEF	
200-126-009	G	
202-085-001	NOPQ	

### 9-HOLE CORDING FOOT



This foot enables you to attach up to 9 cords together by threading the cords through the 9 holes on the foot. Use soft cords (Diameter approximately 1 mm).

202-506-003	NOPQ	
-------------	------	--

### RIBBON/SEQUIN FOOT



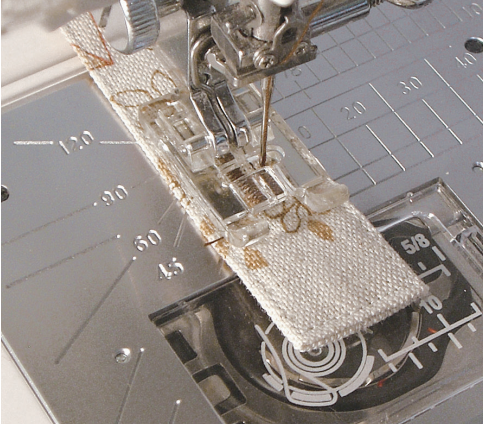
As with beads and pearls it is now so much easier to attach ribbons and even sequins with the help of our special ribbon/sequin foot. This foot is designed with guides through which ribbon or strung sequins can be inserted and it will allow them to feed through evenly as you sew. Besides affixing the ribbon, a wide ladder stitch can be used with narrow ribbon to make an easy and functional drawstring.

[https://youtu.be/zCwtSaC\\_Wbs](https://youtu.be/zCwtSaC_Wbs)



200-332-000	A CDEF	
202-090-009	NOPQ	

## TRANSPARENT BUTTONHOLE FOOT



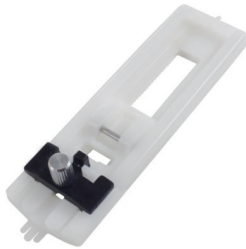
For sewing buttonholes on tight areas such as cuffs and other areas where more freedom of movement is required than available with a sliding-type buttonhole foot.

<https://youtu.be/53WA6FcVfcc>



202-082-008	NOPQ	
-------------	------	--

## SLIDING BUTTONHOLE FOOT



For easy 4-step buttonholes on front loading machines. (Sliding buttonhole foot included as standard accessory on all sewing machines with a 1-step buttonhole function.)

200-134-000	G	WITH BUTTON SIZER
-------------	---	-------------------

## BUTTON SEWING FOOT



Quick and easy button sewing with the special button sewing foot. This foot has two bars that attach to the foot shank to provide extra stability and also has a textured, rubber sleeve to hold the button securely in place while sewing.

[https://youtu.be/A6p6Sv9PH\\_8](https://youtu.be/A6p6Sv9PH_8)



200-136-002	A CDEF	
200-131-007	G	



### 1/4 INCH SEAM FOOT



A popular foot with patchworkers for that essential 1/4 inch seam. The guide on the foot enables you to sew a perfect 1/4 inch seam every time. The guide can also be used wherever a 1/4 inch seam is called for but the markings on the needle plate cannot be used, such as when completing a flat-felled seam.

<https://youtu.be/L2PEIaLkAHc>



200-318-000	A CDEF	
200-330-008	G	

### 1/4 INCH SEAM FOOT (WITHOUT GUIDE)



As with the 1/4 inch seam foot, this foot enables you to sew the 1/4 inch position by aligning the cloth with the edge of the presser foot. Fabric can be fed stably using the wide area of the foot.

202-529-002	A CDEF	
202-313-001	NOPQ	

### CLEAR VIEW 1/4 INCH SEAM FOOT



This foot allows you to sew 1/4 inch seam piecing, indispensable for quilt work, using the straight stitch needle plate. The small single hole in both the plate and the foot ensures the most control over fabric possible and the least risk of threads or fabric getting caught in the feed dogs.

\*Must be used with a straight stitch in center needle drop position.

202-216-003	NOPQ	
-------------	------	--

## CLEAR VIEW QUILTING FOOT AND GUIDE SET



An essential set for all quilters because it covers a range of quilting tasks through the attachment or removal of two fabric guides and the use of a clear view foot. Create accurate 1/4 inch seams with the 1/4 inch guide, or remove the guide to make a 1/8 inch seam for miniature piecing using the handy markings on the clear foot. To decorate your quilt, attach the center guide to ensure a neat "stitch in the ditch" for the perfect finishing touch.

### Contents

- Clear view quilting foot
- 1/4 inch seam guide
- Ditch quilting guide

<https://youtu.be/yz6Z5QzbYr8>



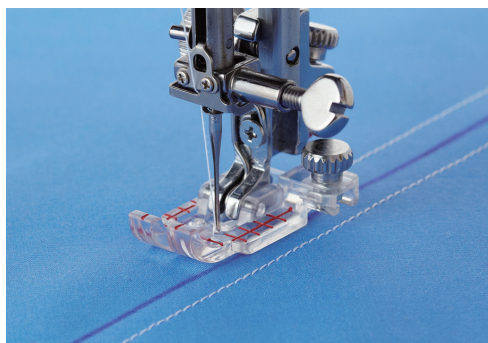
200-449-001	A CDEF	
202-089-005		NOPQ



Simply attach the 1/4 inch fabric guide which aligns with the edge of the material to produce an accurate 1/4 inch seam with ease. The oval hole in the clear view foot allows for needle adjustment of up to 1 mm to create a scant 1/4 inch seam.

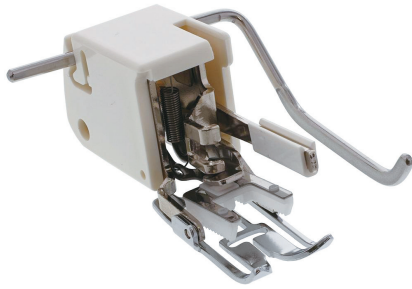


Add dimension to your quilt using the "stitch in the ditch" technique. The center guide attached to the foot spreads the seams to create perfect stitching in the ditch. Don't stop with straight ditch stitching - experiment with decorative stitches for eye-catching embellishment.



Some quilting techniques may require you to sew with some fabric under the fabric guide, so use the clear view foot without a guide to help the fabric move easily under the foot. The markings on the foot act as a guide for 1/4 inch and 1/8 inch seams.

## EVEN FEED FOOT WITH QUILTING GUIDE



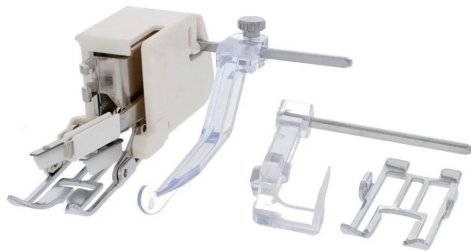
The even feed foot, sometimes referred to as the walking foot, is designed with a set of feed dogs (teeth) which allow the fabric to feed without shifting and eliminates the problems of the underlayer of fabric coming up short. The even feed foot is great for topstitching which can be spoilt due to irregularity of stitching. Also includes metal quilting guide.

<https://youtu.be/oEbfPismspk>



200-309-008	A	
200-311-003	DEF	REGULAR
200-310-002	G	
200-338-006	A	OPEN TOE
200-339-007	DEF	

## CONVERTIBLE EVEN FEED FOOT SET



The set includes even foot unit, open toe foot, ditch quilting guide and adjustable quilting guide bar.

<https://youtu.be/XgUPgP9tE9E>



214-516-003	A	
214-517-004	DE	
202-133-005	O Q	

## DITCH QUILTING GUIDE AND ADJUSTABLE QUILTING GUIDE SET



A separate quilting guide bar and ditch quilting guide bar set is available for those who already own the even feed foot.

214-518-005	For even feed foot	
-------------	--------------------	--

### DITCH QUILTING FOOT



A very useful addition to the sewing room when wanting a perfectly straight "stitch in the ditch". The guide on the foot spreads the seams allowing you to stitch perfectly in the ditch, and is also useful when adding decorative top stitching along seams.

<https://youtu.be/JYDu7xHIUEI>



200-341-002	A CDEF	
202-087-003		NOPQ

### LONG QUILTING GUIDE BAR SET



For easy 4-step buttonholes on front loading machines. (Sliding buttonhole foot included as standard accessory on all sewing machines with a 1-step buttonhole function.)

202-025-003	A CDEF	NOPQ
-------------	--------	------

### 1/4 INCH RULER FOOT



The 1/4 INCH RULER FOOT was specifically designed to use with quilting rulers for ruler work. The key point of the foot is the 1/4 inch cup height which moves smoothly alongside the quilting ruler without allowing the ruler to slide over or under the foot. The needle drops a 1/4 inch away from the ruler to create the quilting line.

202-442-000	DE	
202-441-009	A C	OPQ



## CONVERTIBLE FREE MOTION QUILTING FOOT SET



This set includes three feet that can be used with a variety of fabrics for free motion quilting projects. Select the most appropriate foot for the task and attach to the foot holder with a quick screw adjustment. The height of all feet can also be adjusted so they glide effortlessly over layers of fabric.

202-001-003	A C	
202-002-004	DE	
202-146-001*	NO PQ	

\* Please refer to the table below.

### CLOSED-TOE FOOT



Convenient for lace and other fabrics that catch on an open toe, this general use foot is also good for holding the fabric in front of the needle.

### OPEN-TOE FOOT



Also for general use, but with greater visibility around the needle to assist formation of a precise design.

### CLEAR VIEW FOOT



The clear view foot moves smoothly over uneven layers such as fabric with cording or ribbon, and can also be used with zigzag stitches.

## Ordinary sewing

Foot		Closed-toe foot (L)	Open-toe foot (L)	Clear-view foot (L)	Clear-view foot (M)
859A	HORIZON MC12000	<ul style="list-style-type: none"> <li>• Feed dog: Down</li> <li>• Needle position: Left</li> </ul>	<ul style="list-style-type: none"> <li>• Feed dog: Down</li> <li>• Needle position: Left</li> </ul>	<ul style="list-style-type: none"> <li>• Feed dog: Down</li> <li>• Needle position: Left</li> </ul>	<ul style="list-style-type: none"> <li>• Feed dog: Down</li> </ul>
858F	HMC8900QCP				
858G	HMC8200QC				
861A	MC9900				
861AL	MC9850				
862A	HORIZON MC15000				
862A2					
862F	HORIZON MC14000				
863AU	SKYLINE S7				
863F	SKYLINE S6				
863A	SKYLINE S5				
862A3	HORIZON Quilt Maker MC15000	<ul style="list-style-type: none"> <li>• Feed dog: Down</li> <li>• Needle position: Left</li> </ul>	<ul style="list-style-type: none"> <li>• Feed dog: Down</li> <li>• Needle position: Left</li> </ul>	<ul style="list-style-type: none"> <li>• Feed dog: Down</li> <li>• Needle position: 1.0</li> <li>• ZigZag needle plate</li> </ul>	<ul style="list-style-type: none"> <li>• Feed dog: Down</li> </ul>
862SA	SKYLINE S9				
865C	HMC9450QCP				
865A	HMC9400QCP				
866A	MC6700P				
866D	MC6650				
867A	CM7P				
867C	CM8P				
867CL	CM6				
869A	HMC9480QCP				
869AL	HMC9410QC				
868	CM17				

## Sewing application

Foot/ Machine Setting		Closed-toe foot (L)						Open-toe foot (L)						Remarks
		Straight Stitch 1	Straight Stitch 2	Straight Stitch 3	Straight Stitch 4	ZigZag Stitch 1	ZigZag Stitch 2	Straight Stitch 1	Straight Stitch 2	Straight Stitch 3	Straight Stitch 4	ZigZag Stitch 1	ZigZag Stitch 2	
859A	HMC12000	No	No	-	-	No	No	No	No	-	-	No	No	
861A	MC9900	No	No	-	-	No	-	No	No	-	-	No	-	Zigzag stitch1: Zigzag
861AL	MC9850	No	No	-	-	No	-	No	No	-	-	No	-	
862A/A2/A3	HMC15000	No	No	-	-	No	No	No	No	-	-	No	No	
862F	HMC14000	No	No	-	-	No	No	No	No	-	-	No	No	
862SA	SKYLINE S9	No	No	-	-	No	No	No	No	-	-	No	No	
863AU	SKYLINE S7	No	No	-	-	No	No	No	No	-	-	No	No	
865C	HMC9450QCP	No	No	-	-	No	No	No	No	-	-	No	No	
865A	HMC9400QCP	No	No	-	-	No	No	No	No	-	-	No	No	
867A	CM7P	No	No	-	-	No	No	No	No	-	-	No	No	
867C	CM8P	No	Yes	No	No	No	No	No	Yes	No	No	No	No	
867CL	CM6	No	Yes	No	No	No	No	No	Yes	No	No	No	No	
869A	HMC9480QCP	No	Yes	No	No	No	No	No	Yes	No	No	No	No	
869AL	HMC9410QC	No	Yes	No	No	No	No	No	Yes	No	No	No	No	
868A	CM17	No	Yes	No	No	No	No	No	Yes	No	No	No	No	

Foot/ Machine Setting		Clear-view foot (L)						Clear-view foot (M)						Remarks
		Straight Stitch 1	Straight Stitch 2	Straight Stitch 3	Straight Stitch 4	ZigZag Stitch 1	ZigZag Stitch 2	Straight Stitch 1	Straight Stitch 2	Straight Stitch 3	Straight Stitch 4	ZigZag Stitch 1	ZigZag Stitch 2	
859A	HMC12000	No	No	-	-	No	No	Yes	No	-	-	Yes	No	
861A	MC9900	No	No	-	-	No	-	-	-	-	-	No	-	Zigzag stitch1: Zigzag
861AL	MC9850	No	No	-	-	No	-	-	-	-	-	No	-	
862A/A2/A3	HMC15000	No	No	-	-	No	No	Yes	No	-	-	Yes	No	
862F	HMC14000	No	No	-	-	No	No	Yes	No	-	-	Yes	No	
862SA	SKYLINE S9	No	No	-	-	No	No	Yes	No	-	-	Yes	No	
863AU	SKYLINE S7	No	No	-	-	No	No	Yes	No	-	-	Yes	No	
865C	HMC9450QCP	No	No	-	-	No	No	Yes	No	-	-	Yes	No	
865A	HMC9400QCP	No	No	-	-	No	No	Yes	No	-	-	Yes	No	
867A	CM7P	No	No	-	-	No	No	Yes	No	-	-	Yes	No	
867C	CM8P	No	Yes	No	No	No	No	No	Yes	No	No	No	No	
867CL	CM6	No	Yes	No	No	No	No	No	Yes	No	No	No	No	
869A	HMC9480QCP	No	Yes	No	No	No	No	No	Yes	No	No	No	No	
869AL	HMC9410QC	No	Yes	No	No	No	No	No	Yes	No	No	No	No	
868A	CM17	No	No	No	No	No	No	Yes	Yes	No	No	Yes	No	

## BOBBIN HOLDER FOR FREE QUILTING AND HAND-LOOK STITCHING



Couple the convertible FMQ foot with this handy bobbin holder preset with lower tension to make it even easier to achieve even tension control.

200-445-007	A*1 C*2	N*3 OP*4Q	
202-006-008	D		
202-433-008	A*5	N*6 P*7	

\*1 excl. MC1000 \*2 also MC6500P, DC6030, 4120QDC and 3160QDC \*3 excl. CM17  
 \*4 excl. CM8P, CM7P, CM6 \*5 For use with MC1000 only \*6 For use with CM17 only  
 \*7 For use with CM8P, CM7P, CM6 only

## FREE MOTION COUCHING FOOT SET



Enjoy embellishing your work with cords, strips and yarns by free-motion stitching. Zigzag stitch makes it easy to sew on any line or shape precisely. Two different feet are included to match material thickness.

202-110-006	A C	NOPQ	
-------------	-----	------	--

## BORDER GUIDE FOOT



Create evenly spaced rows of decorative stitching with this border guide set. The horizontal red line matches up the needle drop of each row and the vertical red lines allow accurate positioning of one row with another.

<https://youtu.be/jkEzLKPstOE>



200-434-003	A CDEF		
202-084-000	NOPQ		

## BUTTONHOLE STABILIZER PLATE



With the buttonhole foot R attached to the buttonhole stabilizer plate, the machine feeds various kinds of fabric and uneven layers more smoothly instead of eating the fabric or causing the needle to stick in position.

<https://youtu.be/Kyay3rGeJSo>



200-428-004	A CDE	
-------------	-------	--

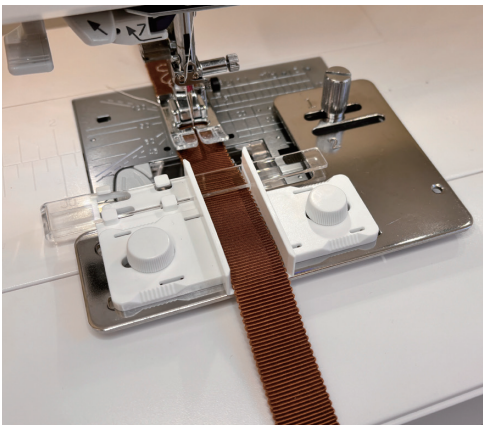
## LARGE BUTTONHOLE FOOT AND STABILIZER PLATE



The size of a buttonhole is automatically set by placing a button in the rear of automatic buttonhole foot LR. The button holder of the foot takes a button sizes of 2.5 cm (1") to 5.0 cm (2") in diameter. The stabilizer plate holds and supports the fabric so it is very helpful when sewing buttonholes over the hem of thick fabrics.

202-199-009	NOPQ	
-------------	------	--

## RIBBON SEWING GUIDE



Create original ribbons by adding decorative stitching or lettering. The guide's design ensures easy attachment and automatic centering, while the transparent stabilizer bar provides perfect control. Add originality to projects and make the most of your machine's decorative stitches.

200-444-408	A CDEF	NOPQ
-------------	--------	------



## EDGE GUIDE FOOT



The guide of this foot aligns edges/seams of fabric so that neatly parallel edge stitching and topstitching can be achieved with ease. Adjust the guide by turning the screw to match the edge/seam precisely.

<https://youtu.be/RA7rexcSbDY>



202-147-002	A CDEF	
202-100-003		NOPQ

## CIRCULAR ATTACHMENT



The circular attachment is the ideal attachment for sewing circles using either straight stitch, zigzag, decorative stitches or even lettering. Circles up to 26 cm in diameter are stitched perfectly using this popular attachment so essential for craft and decorative work.

Part Number	Package	Remarks	Compatible Models						
			Harmony 4045/4052	6019QC 6125QC	FD216/212/206 Sew Mini Platinum	M30A	3160QDC 2160DC 2030DC	4120QDC 5120QDC 4300QDC	TS100Q TS200Q
202-106-009	BP	Easy Set Bobbin System is not supported	502	503	508	805	808A/D/F/S/X	809A/AS	811A
			6260QC	MC6600P MC6500P	HMC8900QCP HMC8200QC	HMC12000	MC11000		
			845	846A/F	858F/G	859A	860		
202-107-000	BP	Easy Set Bobbin System is not supported	MS5027 MS5021 CS5031 SC5021	Easy Jeans 22 My Style 22	Jem Gold	Jem Gold2	MyExcel 4014/4018 4023/4123	HD2200 MyExcel 18/23	Décor 5124 5024 5018
			505	654	660	661	751	753	757
			Jem Platinum	DC4030	MC8000	MC9000	MC5700 MC5000	MC3500/3000	MC4800
			806	807	830	832	834	840	841
			DC4100	DC3018 DC3030 DC3060 DC8350	MC5200	MC4900	MC10000 MC10001	MC9500	MC9700
842	843	844	847	850	853	857			
202-135-007	BP	Metal Needle Plate with Easy Set Bobbin System is required	5300QDC 5270QDC	M50QDC M100QDC M200QDC	Sewist 780DC 740DC	MC1000	HMC8900QCP SE	HMC8200QCP SE	MC9900 MC9850
			809AU/AU2	812	814	819	858F2	858G2	861
			HMC14000 HMC15000 SKYLINE S9	SKYLINE S3/S5/S6/S7	HMC9450QCP HMC9400QCP	MC6700P MC6650	HMC9480QCP HMC9410QC	CM8P CM7P CM6	CM17
			862A2/A3/S	863	865	866	869	867	868

## BOBBIN HOLDER (high tension for embroidery use)



This bobbin holder creates easy-to-adjust thread tension when embroidering with non-Janome bobbin thread. The bobbin holder is marked with a YELLOW dot for identification.

202-134-006	A*1 B*2	N*3 O	
*1 excl. MC1000 *2 MC350E only *3 excl. CM17			

## QUILT BINDER SET



Use the quilt binder set to produce 1/2 inch binding which can handle quilt fabric and other thick fabrics. Adjust the two upper screws to align the binding's top and bottom folds with the needle for extra precision. The set creates straight line binding for large quilts and also adds an eye-catching accent to any small items such as placemats and hot pads.

846-421-007	A C*1		
202-211-008		NOPQ	

\*1 also MC6500P

## FLOWER STITCHER



Even when using sewing machines without a large number of stitches, this attachment will allow you to produce unique and pretty flower designs and also eyelets, with ease.

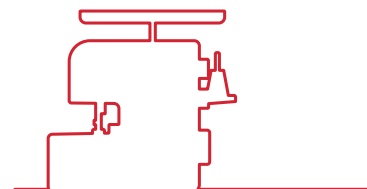
202-261-003	DEF		
-------------	-----	--	--



# OVERLOCKER ACCESSORIES

Janome overlockers are known for their ease of use and beautiful serging results.

Specialized overlocker feet and accessories are designed to give you the effect you want even on stretchy and thin fabrics.



## CORDING FOOT (B)



Used in conjunction with the narrow hem, the cording foot B allows you to insert decorative cording as you stitch. This will give fine beautiful finished edges to table and other linens.

202-035-006	H	
-------------	---	--

## BLIND STITCH FOOT



Blind hemming is never an easy technique and demands practice and patience. It is possible to use your overlocker to blind hem and the blind stitch foot is equipped with a guide to help keep your stitching straight.

[https://youtu.be/\\_JLGGCpytX0](https://youtu.be/_JLGGCpytX0)



202-040-004	H	
-------------	---	--

## ELASTIC GATHERING ATTACHMENT



Stitching on elastic can sometimes be a little tricky especially when you have to stretch your elastic to size. The elastic foot helps make this technique a little easier to handle.

202-523-006	H *1	
202-037-008	H *2	

\*1 excl. ML134D, ML234D, ML534D

\*2 excl. ML134D, ML234D, ML534D, ML454D Sailing Line



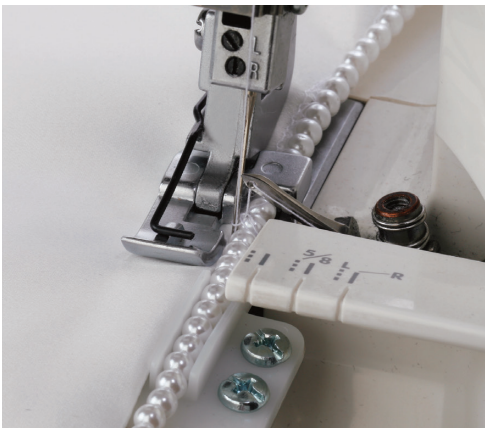
## CORDING FOOT (A)



With the rolled hem facility on your machine you can make great use of the cording foot A. This foot is ideal for bridal and evening wear and allows you to insert fine fishing line while rolling the edge of your material giving you a beautiful firm but flexible finish.

202-034-005	H	
-------------	---	--

## BEADING FOOT



The beading attachment comprises a special sewing foot and guide enabling you to sew strung beads onto the edge of your fabric. Especially attractive for bridal wear.

202-041-108	H*1	
-------------	-----	--

\*1 excl. 134D, 234, 234D, 534D

## PIPING FEET



If ready made piping is not available or if you just want to make your own, the piping foot is ideal, making the task quick and easy. The piping foot is available in two sizes: 1/8 inch and 3/16 inch.

202-039-000	H*	SET OF TWO FEET (1/8 inch and 3/16 inch)
-------------	----	---

\*3/16 inch foot not compatible with 134D, 234, 234D, 534D

## CLOTH GUIDE



As its name suggests, this guide helps keep your seams straight as you sew. Especially useful on flatlock seams and other seams where the knife is lowered.

202-525-008	H*1	
202-038-009	H*2	

\*1 excl. ML134D, ML234D, ML534D

\*2 excl. ML134D, ML234D, ML534D, ML454D Sailing Line

## GATHERING ATTACHMENT



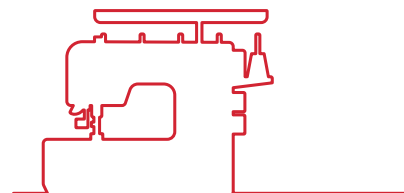
This attachment creates wonderful even gathers. Especially useful when sewing large amounts of fabric, i.e. bed linens and bridal gowns. With the help of this super attachment you can also gather and sew onto a flat piece of fabric in one easy operation.

202-036-100	H*1	
-------------	-----	--

\*1 excl. 134D, 234, 234D, 534D

# COVER STITCH MACHINE ACCESSORIES

Janome has developed a number of accessories to use with the CoverPro series of cover stitch machines. These accessories make it even easier to create beautiful garments from knits and other stretch fabrics.





## CLEAR VIEW COVER STITCH FOOT



The clear view foot gives you a better view of what you are sewing. It is especially useful for decorative topstitching and can also be used with other attachments such as the hemming guide to match up the end of a hem seam with its start for a beautiful finish. Handy markings on the front edge of the foot correspond with needles for perfect stitch alignment.

795-818-107	I	for 3 needles
795-821-103	I	for 2 needles

## HEM GUIDE



### Type 1

The Hem Guide Type 1 folds over a consistent width of fabric for creating cover stitch hems, resulting in straighter hems. The Hem Guide also aids in attaching lace in garment and home decor applications. The guide allows you to create 5/8 inch - 1 3/4 inch hems.

### Type 2

The Hem Guide Type 2 folds over a consistent width of fabric for you, making it easy to form hems, cuffs and other finished edges. When sewing the hem of a tubular item such as a skirt, you can press the release button as you near the finish to release the guide and then finish the rest of the hem.

795-803-109	I	Type 1
795-839-104	I	Type 2

## ELASTIC GATHERING ATTACHMENT



The elastic gathering attachment allows easy attachment of elastic tape for waists and cuffs, which is especially useful for making undergarments and children's clothing. The wide workspace of the CoverPro means you can even add a bit of elastic in the middle of a garment, for example, to the waist of a dress.

795-816-105	I	narrow (6 - 8.5 mm)
795-817-106	I	wide (9 - 13.5 mm)



## CENTER GUIDE FOOT



The center guide foot is used for lining up the center of a two or three-needle stitch with a previously sewn seam. This attachment is especially useful on sportswear and allows you to tack down already sewn seams, give extra strength to seams that come under strain or simply give a finished decorative effect.

795-819-108	I	for 3 needles
795-820-102	I	for 2 needles

## ADJUSTABLE SEAM GUIDE



This seam guide is used to sew perfectly placed seams with accurate spacing between the lines.

795-806-102	I	
-------------	---	--

## TAPE BINDER



The tape binder is used for finishing and covering the raw edges of stretch fabrics. The binder folds the fabric you wish to use as tape around the raw edge as you sew, allowing you to make beautifully finished necks and arm holes and bind any raw edge with ease.

### Contents

- Binder and binder plate
- Binder foot
- Screw

<https://youtu.be/ntyfWtXfLRs>



795-838-103	I	for 3 needles (32 mm/8 mm)
795-844-009	I	for 3 needles (42 mm/12 mm)
795-840-108	I	for 2 needles (32 mm/8 mm)
795-843-008	I	for 2 needles (42 mm/12 mm)

### STEP 1



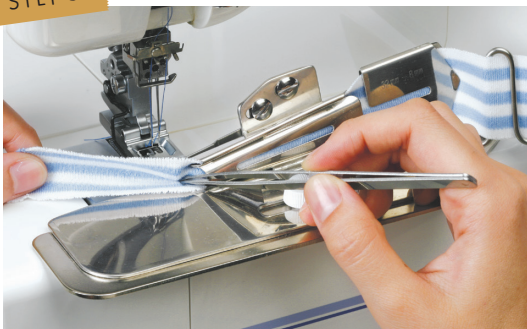
Insert the fabric to be used as tape through the tape guide.

### STEP 2



Guide the tape through the tape guide by gently pulling the end with the tip of the tweezers.

### STEP 3



Pull out the end while using the tweezers tip to help insert the tape between the upper and lower guides at the end of the tube, and then slide the tape under the presser foot.

## TAPE BINDER AND BINDER FOOT WITH GUIDE



This binder set can be used to create a beautiful binder finish like on ready-made T-shirts.

It is the most popular set among optional attachments for cover stitch sewing machines.

202-327-008	I	Tape Binder (Double Fold 8mm) and Binder Foot with Guide (finished with 8 mm for 32 mm tape) *Use only the right needle.
202-328-009	I	Wide Tape Binder (Double Fold 12 mm) and Binder Foot with Guide (finished with 12 mm for 42 mm tape) *Use only the right and center needles.

## TAPE STAND



As the tape can be supplied at the same height to the tape guide of the tape binder by using this tape stand with the tape binder, it feeds smoothly even when using very soft fabric allowing beautiful finishes to be achieved.

202-323-004	I	
-------------	---	--

## BIAS TAPE GUIDE AND BELT LOOP FOLDER



This attachment can be used in two ways: as a "Bias Tape Guide" that can guide bias tape (single fold) and sew it on to knit fabric, and as a "Belt Loop Folder" that can make belt loops from fabric tape. This attachment is useful for creating various types of sewing work.

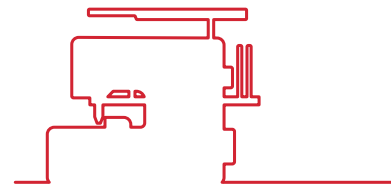
202-464-008	I	
-------------	---	--



# PROFESSIONAL OVERLOCK and COVER STITCH MACHINE ACCESSORIES

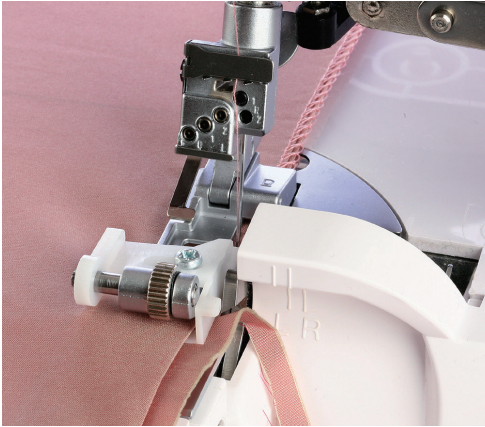
Ready to wear details and decorative accents are easily duplicable with Janome's combined overlock and cover stitch machine accessory range.

Create the look you want the way you want it.





## BLIND STITCH FOOT



The adjustable guide on the blind stitch foot ensures that any weight of fabric is trimmed, overlocked and invisibly hemmed in one quick step. Change the stitch and it becomes a wonderful guide for decorative pintucks, lacy fagoting or flatlocking as seen in ready to wear.

200-806-103	M	
-------------	---	--

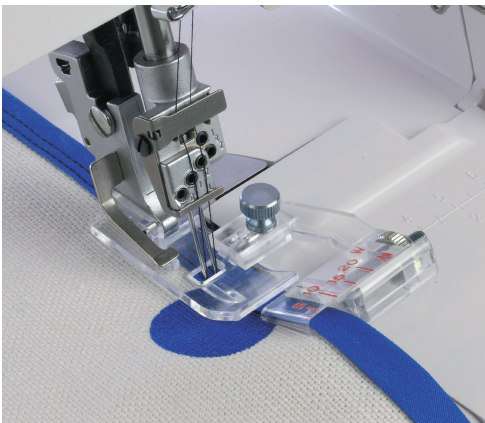
## BEADING FOOT



Beaded trims add that special touch to any project. Deep grooves on the bottom of the pearl foot guide strands of pearls or beads perfectly into place and are secured with a flatlock stitch.

200-809-106	M	
-------------	---	--

## BIAS TAPE FOOT

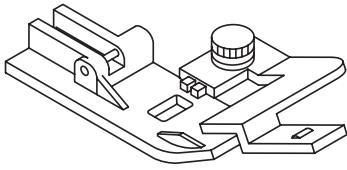


This adjustable foot allows you to attach 10 mm to 40 mm wide bias tape. Creating the look you want has never been easier.

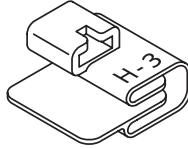
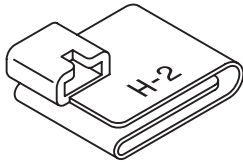
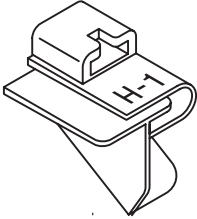
200-810-100	M	
-------------	---	--

## COVER HEM FOOT, LACE ATTACHMENT, HEM & WRAPPED EDGE GUIDES

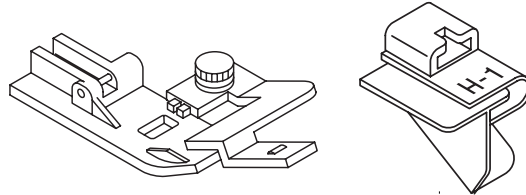
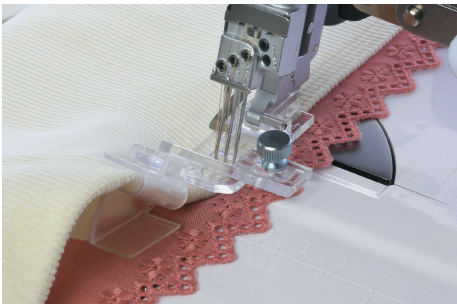
This set will save you a lot of time and trouble by making light work of hems. It offers three different ways to finish the edges of fabric, whether it's making a basic hem, decorating a hem with lace or creating a bias tape finish. Use for a multitude of projects.



200-801-407	M coverhem only
-------------	-----------------

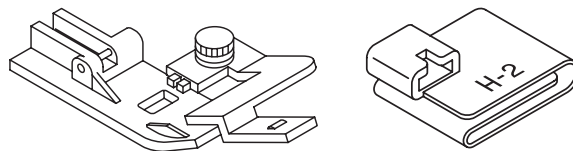
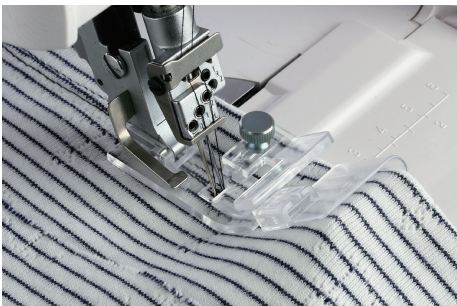


### COVER HEM FOOT AND LACE ATTACHMENT



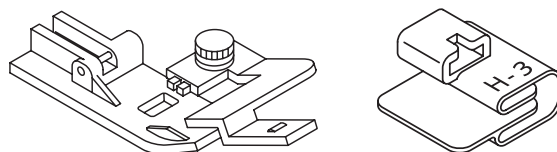
Efficient and clever, this guide folds perfect 6 mm (1/4 inch) edges. At the same moment it's hemming, it attaches lace or trim placed underneath. Use with the cover hem foot.

### COVER HEM FOOT AND HEM GUIDE



Hem edges evenly without measuring, pinning or pressing. Simply insert the fabric and the guide automatically folds and creates a 2.5 cm (1 inch) hem. Use with the cover hem foot.

### COVER HEM FOOT WRAPPED EDGE GUIDE



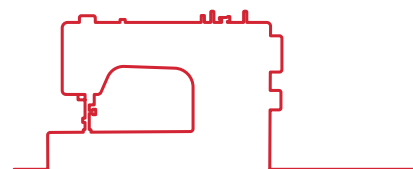
This guide creates the look of bias tape. In addition, it also attaches pre-made bias tape. Hem edges evenly without measuring, pinning or pressing and duplicate ready-to-wear details easily.



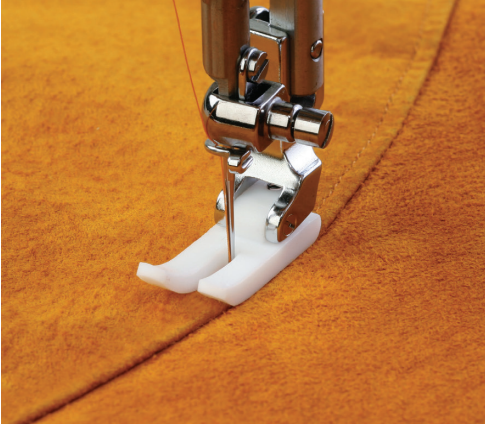
# HIGH SPEED MACHINE ACCESSORIES

Janome high speed sewing machines sew at a maximum 1,600 stitches per minute, the fastest on the market.

Everything on these sewing and quilting machines is built for high quality stitches at professional speeds, including the specialized accessories and presser feet.



## ULTRA GLIDE FOOT



Molded from a special resin for easy sewing of fabrics that might stick to a metal foot, the ultra glide foot is perfect for sewing ultra suede, vinyl and imitation leather.

767-404-028	J	
-------------	---	--

## HD ROLLER FOOT



An innovative new foot that can smoothly control materials such as leather and vinyl which are prone to catch. When using this foot, the base of the needle is clearly visible, making your work easier.

202-418-007	A C	J	NOPQ	
-------------	-----	---	------	--

## NARROW STRAIGHT STITCH FOOT



This foot is only 2 mm wide from the needle drop to the edge of the foot making it convenient for narrow topstitching especially on areas such as collars and pockets.

767-406-019	J	
-------------	---	--



## STRAIGHT STITCH FOOT AND NEEDLE PLATE FOR FINE FABRICS

The specialized foot and needle plate work together to provide optimal feeding of fine fabrics.



767-405-007

J

## 1/4 INCH SEAM FOOT



The side guide allows you to sew a 1/4 inch seam allowance quickly and accurately. Great for piecing quilts and topstitching.

767-820-105

J

## DITCH QUILTING FOOT



Use this foot for perfect placement when stitching in the ditch. The guide follows the seamline keeping the stitch line perfectly straight.

767-824-109

J

## EVEN FEED FOOT



The even feed foot walks over fabric to assist with smooth feeding. Fabric can be sewn without puckering as the fabric is gripped and fed by both the upper and lower feed dogs. This foot has been specially designed for durability and to work at the high speeds of the 1600 series.

767-403-016

J

## DARNING FOOT WITH DARNING PLATE



The spring loaded foot can be used for free motion stippling, quilting and free form monogramming. The darning plate is placed over the existing needle plate to cover the feed dogs.

767-827-009

J

## TAPING FOOT



Use this foot for attaching tape to the edge of fabrics. Adjust the needle drop position with the thumb screw. Guide the fabric with the left hand and tape with the right hand.

767-412-018

J

## ADJUSTABLE ZIPPER FOOT



This foot can be set to sew on each side of the zipper by adjusting the position of the foot and tightening the thumb screw. Also great for sewing close to piping.

767-408-011	J	
-------------	---	--

## CONCEAL® ZIPPER FOOT



This foot can be used for placement of invisible zippers. The grooves underneath accommodate the zipper teeth and hold them in place while you stitch.

767-410-016	J	
-------------	---	--

CONCEAL is a registered trademark of YKK Corporation.

## ADJUSTABLE SEAM GUIDE

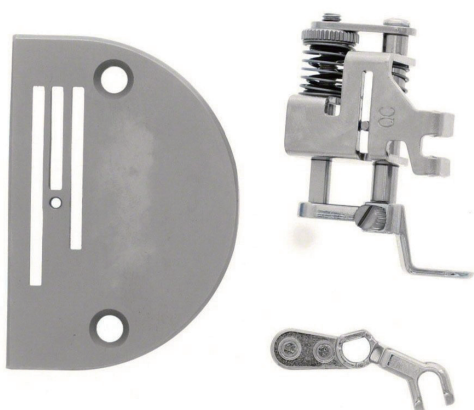


This seam guide is used to sew perfectly placed seams with accurate spacing between the lines.

767-411-017	J	
-------------	---	--



## CONVERTIBLE FREE MOTION QUILTING FOOT SET



An exciting free-motion quilting presser foot set for the straight stitch machine. The feet are streamlined for improved visibility and a darning plate is also provided for table top free-motion quilting. The industrial construction reduces vibration and provides professional-level durability.

767-433-004	J	
-------------	---	--



For general use and especially well suited for lace and other catchable fabrics.



Also for general use, but the open-toe design provides greater visibility around the needle to assist in the formation of a precise design.

## FREE MOTION FRAME QUILTING FEET SET

This set has been specifically designed to support quilters who use quilting frames with the 1600P series. The set consists of a 1/4 inch ruler foot and an open-toe frame quilting foot.



767-434-005	J	
-------------	---	--



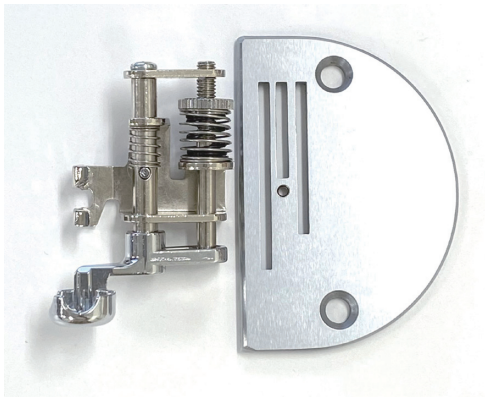
This open-toe foot has an opening that faces sideways to provide a clear view of your work when standing at the handles of a quilt frame.



The 1/4 inch ruler foot has a high 'heel' and 1/2 inch diameter for free-motion quilting with 1/4 inch thick quilt rulers and long arm quilting templates.



## 1/4 INCH RULER FOOT SET



The 1/4 INCH RULER FOOT was specifically designed to use with quilting rulers for ruler work.

The key point of the foot is the 1/4 inch cup height which moves smoothly alongside the quilting ruler without allowing the ruler to slide over or under the foot.

The needle drops a 1/4 inch away from the ruler to create the quilting line.

\* This set includes a needle plate.

767-441-005	J	
-------------	---	--

# NEEDLES

No matter how advanced or sophisticated the sewing machine has become, the basic principle of selecting the correct needle to be used must still apply.

Quite simply, the finer the fabric the finer the needle, the heavier the fabric the heavier the needle, but whether fine or heavy it is important to replace your needles regularly.



## ASSORTED SEWING NEEDLES



## Contents

- Blue Tip needle x 1
- #75/11 regular type needle x 2
- #90/14 regular type needle x 2

200-135-001	ABCDEFG	NOPQ	
-------------	---------	------	--

## BLUE TIP NEEDLES



The Blue Tip needle, a Janome exclusive, is a size #75/11 needle and is our best "all purpose" needle for both machine embroidery and general sewing including the sewing of knit fabrics. It features a ball point tip\* which helps to create neat and tidy stitches.

200-346-007	ABCDEFGH	NOPQ	
-------------	----------	------	--

## PURPLE TIP NEEDLES



The purple tip needle is a #90/14 size needle that prevents skipped stitches in heavy fabrics including knits in ordinary sewing and when embroidering. It features a ball point tip\* which helps to create neat and tidy stitches.

## Uses -

- Embroidery with high density designs and/or thick fabrics
- Use with fluffy threads like cotton
- Quilting through multiple layers
- Normal sewing for shrink fabrics such as knits and tricot or synthetic fabrics such as polyester

202-122-001	ABCDEFGH	NOPQ	
-------------	----------	------	--

\*The ball point tip is especially useful when sewing knitted fabric and synthetic fabric as it prevents fabric thread breakage.

## RED TIP NEEDLES



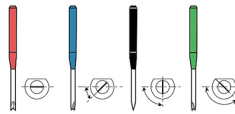
The red tip needle is a #90/14 size needle and is for general sewing and for embroidery of medium to heavy fabrics.

990-314-109	ABCDEFG	NOPQ	
-------------	---------	------	--

## CUTWORK NEEDLE SET



This set contains 4 color-coded needles with the following cutting angles:



202-200-004		N*1	
-------------	--	-----	--

\*1 excl. HMC12000

## FM725 CHANGEABLE NEEDLE UNIT



Needle unit with presser foot including five needle (replaceable) unit.

725-822-004		K	
-------------	--	---	--



Model	Needle Type	Part Number	Category	Package
CoverPro	Assorted 80/12 & 90/14 (5/pkg)	795-802-108	I	BP
	Size 80/12 (5/pkg)	795-807-103	I	BP
	Size 90/14 (5/pkg)	795-808-104	I	BP
1600P	HLx5 size 65/9 (10/pkg)	767-811-000	J	BP
	HLx5 size 75/11 (10/pkg)	767-812-001	J	BP
	HLx5 size 90/14 (10/pkg)	767-813-002	J	BP
<b>1600P-DB</b> <b>1600P-DBX</b> <b>HD9P</b>	HLx5 size 100/16 (10/pkg)	767-814-003	J	BP
	DBx1 size 65/9 (10/pkg)	767-807-003	J	BP
	DBx1 size 75/11 (10/pkg)	767-808-004	J	BP
	DBx1 size 90/14 (10/pkg)	767-809-005	J	BP

# OTHER ACCESSORIES



## PLASTIC BOBBINS (10/pkg)



These plastic bobbins can be used for Janome home use models. Replace any bobbin that is worn, cracked, or nicked; a damaged bobbin can cause sewing problems.

200-122-005	ABCDEFG	NOPQ	
-------------	---------	------	--

## EMBROIDERY COUCHING FOOT SET



The Embroidery Couching Foot Set includes 2 feet for using different yarn weights, a yarn guide arm that attaches to the extra spool pin hole on the top of the machine, plus instructions on How-to-use this foot set.

202-316-004	B*1	
202-297-008	N*2	

\*1 excl. MC350E, MC300E and MC200E

\*2 excl. HMC12000

## BRUSH-OUT EMBROIDERY KIT



Brush-out embroidery uses yarn which can be fluffed up after sewing to create a soft, three-dimensional finish. The Brush-Out Embroidery kit includes a special foot and brush and is designed for use with the Brush-Out Embroidery Design CD-ROM from Stitchitize.

200-383-006	A*1 B*2	
-------------	---------	--

\*1 excl. MC1000 and SKYLINE 53

\*2 For use with MC350E, MC300E and MC200E only

## SPOOL HOLDER (SPECIAL)



Have you had times when you're putting a long spool on the horizontal spool stand but the spool pin is short and the spool holder can't be attached?

Janome has come up with a solution for this by developing a new spool holder.

The "Spool Holder (special)" is specifically for long spools.

202-233-006	ABCDEFG	NOPQ	
-------------	---------	------	--

## PROTECTIVE SHEET



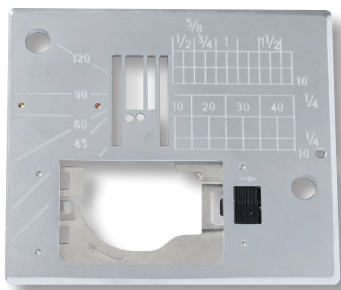
A sheet to protect the stainless steel plate on the free arm top from scratches and damage. Being transparent, it doesn't interfere with the exterior design and allows the embossed measurement guide to still be used.

859-434-003		N*1	
-------------	--	-----	--

\*1 For use with HMC15000 and HMC12000 only



## STRAIGHT STITCH NEEDLE PLATE



The straight stitch needle plate is designed with a round needle hole which offers the benefit of more support around the needle and is used in conjunction with the straight stitch foot.

Part Number	Package	Standard or Optional	Compatible models	Max. zigzag width	Needle Position	Easy Set Bobbin	One-Touch Needle Plate Conversion	Remarks
867-405-000	BP	Optional	CM6/CM7P/CM8P/CM17	9 mm	L	Yes	Yes (Magnet type)	HP Needle Plate and HP Foot
869-410-004	BP	Optional	HMC9480QCP/HMC9450QCP/HMC9410QC/HMC9400QCP/SKYLINE S9 ver.2.00 or later/SKYLINE S7 Anniversary Edition/MC6700P/MC6650/HMC15000	9 mm	L	Yes	Yes	HP Needle Plate and HP Foot

## OPTIC MAGNIFIER



When you need to get a closer view, attach the magnifier to make it easy to see the tiniest detail under the needle. Useful when threading, adjusting the position of the fabric, and carrying out detailed work.

Part Number	Package	Holder	Strength	Compatible Models	
				Optional Accessory	Standard Accessory
202-129-008	BP	Short	20	DC7100/DC7060/DC6030/5060QDC/DC3200	HMC12000
202-130-002	BP	Long	20/40/60	HMC14000*1 HMC9480QCP/HMC9410QC HMC9450QCP/HMC9400QCP HMC8900QCP/HMC8200QC/MC6700P MC9900/MC9850/MC6650/MC1000 SKYLINE S9/S7/S6/S5/S3 Sewist 780DC/740DC 4300QDC M200QDC/M100QDC/M50QDC TS200Q*2/TS100Q*2	HMC15000 5300QDC/5270QDC
202-400-006	BP	Long	20	Same as above	HMC14000
202-432-007	BP	Long	20/40/60	CM8P/CM7P/CM6	CM17

\*1 Strength 20 is packed as a standard accessory. \*2 Holder (#859-233-000) and Setscrew 3x10(#000-161-206) are required for TS200Q/TS100Q(811).

# I N D E X

## JANOME QUALITY

ACUFEED 1/4 INCH SEAM FOOT AND NEEDLE PLATE(Dual feed 1/4 inch seam foot and needle plate)	10
ACUFEED 1/4 INCH SEAM FOOT (Dual feed 1/4 inch seam foot)	10
ACUFEED DITCH QUILTING FOOT(Dual feed ditch quilting foot)	11
ACUFEED FLEX PROFESSIONAL GRADE FOOT(Dual feed plus professional grade foot)	13
ACUFEED FOOT WITH FOOT HOLDER(Dual feed plus foot with foot holder)	12
ACUFEED OPEN TOE FOOT(Dual feed open toe foot)	10
ACUFEED QUILT PIECING FOOT(Dual feed quilt piecing foot)	10
ACUFEED STRAIGHT STITCH FOOT(Dual feed straight stitch foot)	11
ACUFEED ZIPPER FOOT(Dual feed plus zipper foot)	12

## GENERAL SEWING MACHINES

1/4 INCH RULER FOOT	29
1/4 INCH SEAM FOOT	26
1/4 INCH SEAM FOOT (WITHOUT GUIDE)	26
3-WAY CORDING FOOT	24
9-HOLE CORDING FOOT	24
APPLIQUE FOOT	15
BEADING FOOT	23
BINDER FOOT	18
BLIND HEM FOOT	19
BOBBIN HOLDER FOR FREE QUILTING AND HAND-LOOK STITCHING	32
BOBBIN HOLDER(high tension for embroidery use)	35
BORDER GUIDE FOOT	32
BUTTON SEWING FOOT	25
BUTTONHOLE STABILIZER PLATE	33
CIRCULAR ATTACHMENT	34
CLEAR VIEW 1/4 INCH SEAM FOOT	26
CLEAR VIEW QUILTING FOOT AND GUIDE SET	27
CONCEAL® ZIPPER FOOT	20
CONVERTIBLE EVEN FEED FOOT SET	28
CONVERTIBLE FREE MOTION QUILTING FOOT SET	30
CUSTOM CRAFTED ZIGZAG FOOT (Open toe satin stitch foot)	17
DARNING FOOT	16
DITCH QUILTING FOOT	29
DITCH QUILTING GUIDE AND ADJUSTABLE QUILTING GUIDE SET	28
EDGE GUIDE FOOT	34
EVEN FEED FOOT WITH QUILTING GUIDE	28
FLOWER STITCHER	35
FREE MOTION COUCHING FOOT SET	32
GATHERING FOOT	17
HD ROLLER FOOT	17
HEMMER FEET SET	21
LAP-SEAM FOOT	19
LARGE BUTTONHOLE FOOT AND STABILIZER PLATE	33
LEFT BI-LEVEL FOOT	18
LONG QUILTING GUIDE BAR SET	29
OVEREDGE FOOT	19
PINTUCKING CORD GUIDES	23
PINTUCKING FEET	22
PIPING FOOT	21
PIPING FOOT (NARROW)	21
QUILT BINDER SET	35
RIBBON SEWING GUIDE	33
RIBBON/SEQUIN FOOT	24
RIGHT BI-LEVEL FOOT	18
ROLLED HEM FOOT	21
ROLLER FOOT	16
ROUND HEM FOOT	21
RUFFLER	22
SLIDING BUTTONHOLE FOOT	25
SLIDING GUIDE FOOT	15

STRAIGHT STITCH FOOT	15
TAPING GUIDE FOOT	18
TRANSPARENT BUTTONHOLE FOOT	25
TRICOT FOOT	20
ULTRA GLIDE FOOT	16
ULTRA GLIDE NEEDLE PLATE & ULTRA GLIDE FOOT	16
ZIPPER FOOT	20

## OVERLOCKERS

BEADING FOOT	38
BLIND STITCH FOOT	37
CLOTH GUIDE	39
CORDING FOOT(A)	38
CORDING FOOT (B)	37
ELASTIC GATHERING ATTACHMENT	37
GATHERING ATTACHMENT	39
PIPING FEET	38

## COVER STITCH MACHINES

ADJUSTABLE SEAM GUIDE	42
BIAS TAPE GUIDE AND BELT LOOP FOLDER	44
CENTER GUIDE FOOT	42
CLEAR VIEW COVER STITCH FOOT	41
ELASTIC GATHERING ATTACHMENT	41
HEM GUIDE	41
TAPE BINDER	43
TAPE BINDER AND BINDER FOOT WITH GUIDE	44
TAPE STAND	44

## PROFESSIONAL OVERLOCK

### AND COVER STITCH

#### MACHINES

BEADING FOOT	46
BIAS TAPE FOOT	46
BLIND STITCH FOOT	46
COVER HEM FOOT, LACE ATTACHEMNT, HEM & WRAPPED EDGE GUIDES	47

## HIGH SPEED MACHINES

1/4 INCH SEAM FOOT	50
1/4 INCH RULER FOOT SET	54
ADJUSTABLE SEAM GUIDE	52
ADJUSTABLE ZIPPER FOOT	52
CONCEAL® ZIPPER FOOT	52
CONVERTIBLE FREE MOTION QUILTING FOOT SET	53
DARNING FOOT WITH DARNING PLATE	51
DITCH QUILTING FOOT	50
EVEN FEED FOOT	51
FREE MOTION FRAME QUILTING FEET SET	53
HD ROLLER FOOT	49
NARROW STRAIGHT STITCH FOOT	49
STRAIGHT STITCH FOOT AND NEEDLE PLATE FOR FINE FABRICS	50
TAPING FOOT	51
ULTRA GLIDE FOOT	49

## NEEDLES

ASSORTED SEWING NEEDLES	56
BLUE TIP NEEDLES	56
CUTWORK NEEDLE SET	57
FM725 CHANGEABLE NEEDLE UNIT	57
PURPLE TIP NEEDLES	56
RED TIP NEEDLES	57

## OTHER ACCESSORIES

BRUSH-OUT EMBROIDERY KIT	60
EMBROIDERY COUCHING FOOT SET	60
OPTIC MAGNIFIER	62
PLASTIC BOBBINS (10/pkg)	60

PROTECTIVE SHEET	61
SPOOL HOLDER (SPECIAL)	61
STRAIGHT STITCH NEEDLE PLATE	62



**JANOME**

JANOME Corporation

ACCESORY  
CATTALOG