

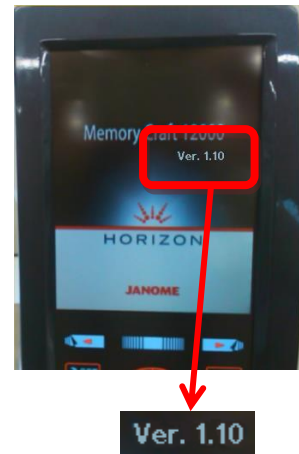
System Update Version 1.20 for Memory Craft 12000

Updates are supplied to improve and upgrade your MC12000. You will benefit from the latest developments in technology by installing these updates.

Before starting the update procedure, check the system version of your Memory Craft 12000.

Turn your Memory Craft 12000's power switch ON. The version of the system will be displayed for 2 seconds on the screen as shown in the image to the right.

Update your Memory Craft 12000 if the current version of the system is less than 1.20.



1. Preparation

Please read articles 1 to 5 of these instructions and carry out updates after fully understanding the required procedure.

To change the language displayed, use the “Language” option box to the top right. (The first language to be displayed will be English.)

You will need a formatted USB flash drive to update your Memory Craft 12000.

Note: Be sure that your Memory Craft 12000 can detect the USB flash drive when it is inserted into the USB port.

* A USB flash drive of Ver. 2.0 or later is recommended.

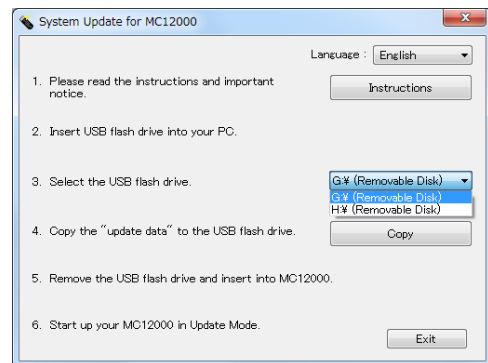
2. Using the USB Flash Drive

Insert the USB flash drive into your computer port.

Note: Please make sure that it is properly inserted and the PC detects the USB flash drive.

3. Selecting USB drive

Open the “System Update for MC12000” option box, and select the USB flash drive.



4. Copy Update Data

Click the “Copy” button and wait until the update files have been copied to the USB flash drive.

After all files have been copied to the USB flash drive, safely remove the flash drive from your computer.

5. System update

(1) Turn your Memory Craft 12000's power switch OFF.

(2) Insert the USB flash drive that contains the update files into the USB port of your MC12000.

Note: Either port on Memory Craft 12000 can be used.

- (3) Press and hold the **Lock Stitch button** and the **Needle Up/Down button** at the same time and turn the power switch ON. Be sure to hold the buttons for at least 3 seconds until the LCD screen shows the blue background.
- Note: The LCD screen turns red when the update files are not properly transferred, or your Memory Craft cannot detect the USB flash drive.



- (4) The Color Bar will appear on the machine's LCD screen and the updating process will automatically start.

Note: Do not turn off your Memory Craft 12000 while it is in the updating process.

Do not remove the USB flash drive while your Memory Craft 12000 is in the updating process.



- (5) The LCD screen of the Memory Craft 12000 will turn blue and show "Finish" when the update is complete.

- (6) After the update is complete, turn your Memory Craft 12000's power switch OFF.

- (7) Remove the USB flash drive from your Memory Craft 12000.

- (8) Turn your Memory Craft 12000's power switch ON again.

- (9) Check the LCD screen to see whether the Version Number in the opening window has updated.



6. Deletion of Update File

If the machine update has been completed successfully, the Unpacked "Update MC12000v120" folder and Zip File are no longer needed.

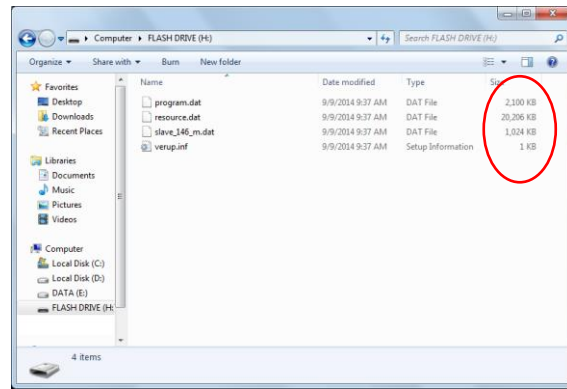
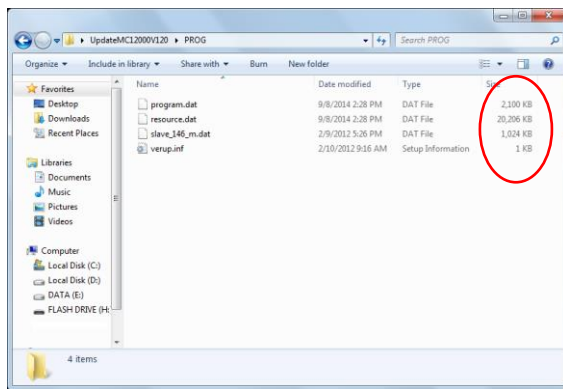
Delete the update files.



Troubleshooting

If the update could not be completed, please check the following:

- Make sure the USB flash drive is properly inserted into your Memory Craft 12000.
- Make sure you have not turned the power switch OFF or disconnected the USB flash drive from your Memory Craft 12000 before the update is complete.
- Make sure the update files have been properly copied to the USB flash drive by following the procedure below.
 1. Open the extracted “UpdateMC12000v120” folder on your PC.
Open the “PROG” folder with Explorer.
 2. Open the USB flash drive with Explorer.
 3. Check and be sure that both folders’ contents are same including those of the file sizes.



If the LCD screen turned red when updating, follow the procedure below.

- (1) Turn your Memory Craft 12000's power switch OFF.
Remove the USB flash drive.
- (2) Turn your Memory Craft 12000's power switch ON and check the result. (Do not press any buttons when turning the switch on.)
 - * If your Memory Craft 12000 starts without any problems, it indicates that your Memory Craft 12000 cannot detect the USB flash drive. Prepare another USB flash drive and repeat the procedure from 1.
 - * If the LCD screen of your Memory Craft 12000 turns red when turning the power switch ON, it indicates your Memory Craft 12000 failed to update.
Repeat the procedure from 1.



If the LCD screen of your Memory Craft 12000 remains black more than 1 minute after turning the power ON, contact the nearest authorized dealer.